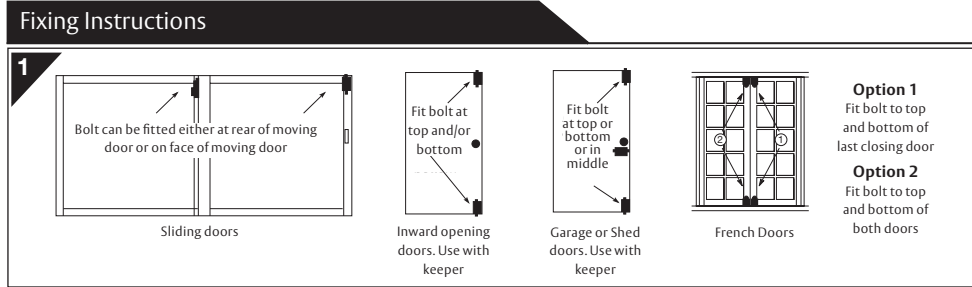
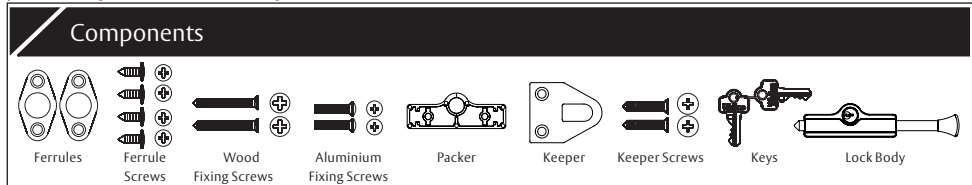


Whitco Patio Bolt: For use with sliding and hinged aluminium or timber doors.

Operation: Key lockable bolt provides push to bolt and key to deadlock operation.

Application: Provides safe bolting or secure deadlocking of most types of doors.

CYL4®: Please see your local hardware retailer or locksmith prior to installation if you are considering having this product keyed to other locks in your home.



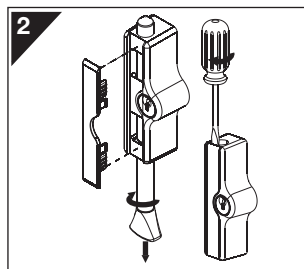
Determine fixing location

Select mounting position, refer to diagrams above. Hold assembled lock in desired mounting position and check for:

- Orientation of lock body (bolt can be inserted from either end)
- Bolt movement - may use drilled hole with ferrule, or keeper (when bolt doesn't engage door frame)
- When using a 5 pin key (refer step 4), use either the 4mm packer or drill a 16mm clearance hole of 5mm depth to accommodate point of the key.

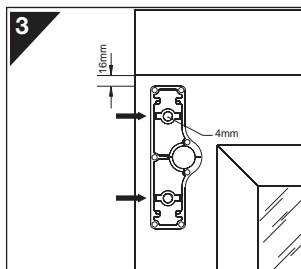
Extra Clearance - For extra clearance and strength it may be necessary to use the packer for optimal bolt engagement.

Sliding Door Applications - avoid fitting bolt at bottom of the door to ensure that the bolt hole does not penetrate the sill or sill flashing as it may result in a water leak.



Remove bolt and screw cover

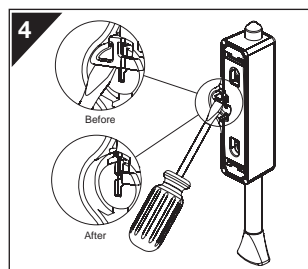
With unit unlocked remove bolt with twist and pull action. Remove cover by twisting a flat head screwdriver in the end slots.



Mark fixing screw locations through packer

Check clearance of screws with glass line and ensure bolt will not interfere with frame in the unlocked position (Leave at least 16mm clearance between top of body and frame). Drill two 4mm pilot holes to suit fixing screws where marked.

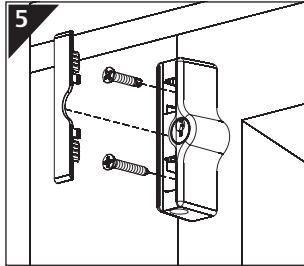
Drilling Holes Accurately - We recommend centre punching holes prior to drilling.



Remove key stop for 5 pin key

Note: Optional - this step is not required if using the key supplied in the pack.

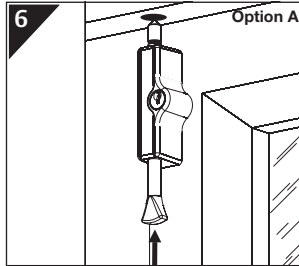
When using a 5 pin key (keyed alike with door locks), snap off triangular cylinder stop, on the back of product using a flat screwdriver as shown and mount lock either using the 4mm packer or by drilling a 16mm clearance hole to provide rear clearance for longer key.



Attach lock to frame

Screw lock body into position using the appropriate screw for the frame material. Replace bolt, check operation and refit screw cover.

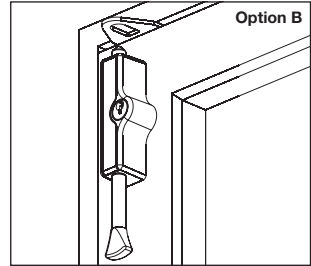
Note: The timber screw has a sharp point and the aluminium screw has a flat tip.



Mark and drill bolt / keeper holes

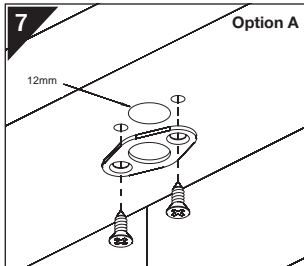
Ferrule (Option A)

With door firmly closed, tap end of bolt to mark drilling location and drill 12mm diameter hole, deep enough for full movement of bolt.



Keeper (Option B)

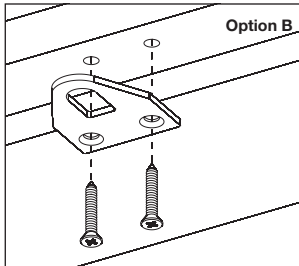
(For use when bolt doesn't engage door frame). With door firmly closed, position keeper over locked bolt and mark location.



Fit ferrule (Option A)

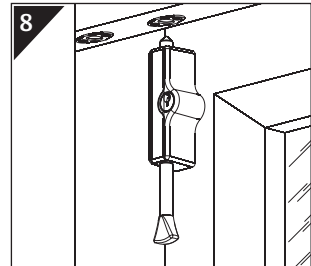
Hold ferrule in position and mark fixing locations. Drill two 2.5mm pilot holes to suit fixing screws and fix ferrule in position.

 **For Sliding Doors** - We suggest drilling a second bolt hole 100mm from the first for a fixed ventilation position.



Fit keeper (Option B)

Hold keeper in position and mark fixing locations. Drill two 3mm pilot holes to suit fixing screws and fix keeper in position.



Check operation

Ensure bolt engages fully so that key can be locked. Pull bolt out to unlocked position and open door to check that bolt remains clear of obstacles throughout swing of door.

Whitco Warranty

ASSA ABLOY Australia Pty Limited ("ASSA ABLOY") warrants its Whitco products against defects in workmanship and materials for a period of 10 years from the date of purchase by the retail customer, subject to the limitations and exclusions set out in this Warranty. If, within this period the product is found to be defective, and none of the limitations and exclusions set out in this Warranty apply, ASSA ABLOY will supply the same or equivalent product free of charge. This is the only remedy granted by ASSA ABLOY under this Warranty. **Limitations:** All window screen and door screen products are warranted for a period of 12 months from the date of purchase by the retail customer. This limitation does not apply to key locks and hinges included in window screen and door screen products, to which the full ten year warranty applies. **Exclusions:** This Warranty does not cover: 1. Damage to or malfunction or failure of the Whitco product caused or contributed to by: (a) misuse, abuse, accidental or intentional damage; (b) improper installation or failure to follow fitting instructions; (c) improper maintenance; (d) use contrary to instructions provided by ASSA ABLOY; (e) fair wear and tear; (f) any modification or repair which has not been authorized by ASSA ABLOY; (g) use of substitute or replacement parts or cylinders other than genuine ASSA ABLOY parts or cylinders. 2. The cost of: (a) removal, replacement or reinstallation of the Whitco product; (b) freight costs and travelling time; (c) any modification or repairs to a Whitco product, unless authorised by ASSA ABLOY. 3. Damage caused by corrosion when the Whitco product is used in a corrosive environment. 4. Tarnish, damage to or deterioration of soft finishes such as Bronze, Brass and other Antique finishes, which are subject to deterioration due to environmental conditions, frequency of use and other factors. 5. Damage to Gold, Chrome and powder coated finishes caused by damage to the protective layer. 6. Deterioration in colour and performance of polymer materials. 7. Personal injury, property damage or economic loss, however caused.

