













Whitco Pushlock: For use with sliding aluminium windows.

Operation: Push button to lock and key to unlock.

Application: Provides fixed venting or secure deadlocking for most types of sliding aluminium windows.

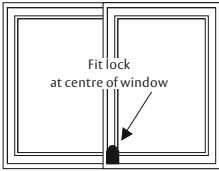
CYL4®: Please see your local hardware retailer or locksmith prior to installation if you are having this product keyed to other locks in your home.

Components

					
Side Packer / Drilling Jig	Side Fixing Screws	Lock Body	Face Fixing Screws	2.5mm Packer	
					
1.5mm Packer	Side Fixing One Way Security Screws	Face Fix Drilling Jig	Face Fixing One Way Security Screws	5mm Packer	Screw Plugs

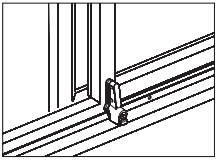
Fixing Instructions

1

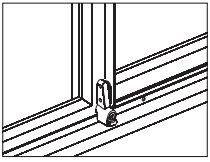


Fit lock at centre of window

Sliding Windows




Face Fix



Side Fix

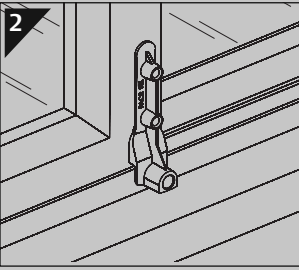
Determine fixing location

Face Fix: In most cases this lock can be screwed on through the face of the lock.
Side Fix: Some window designs will only allow fixing into the side of the lock.

 **Extra Clearance** - for extra clearance and strength it may be necessary to use the packer.

Face Fixing *Note: For side fixing please see over page*

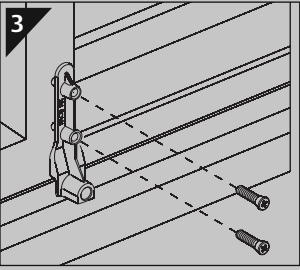
2



Mark fixing screw locations through drilling jig

Position face fix drilling jig as shown, ensure notch rests on upstand. (Use packers if required).
Check clearance of screws with glass line.

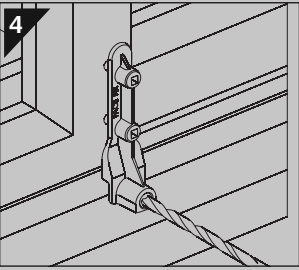
3



Fix drilling jig

Drill 4mm top hole and fix jig to sash using 20mm face fixing screw. Align jig with edge of sash and repeat for bottom fixing hole.
Note: Do not overtighten screws.

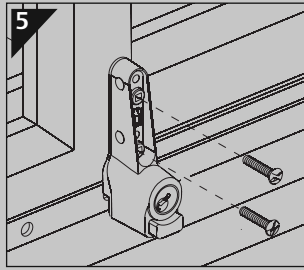
4



Drill bolt hole

With window firmly closed, drill 7mm bolt hole through upstand in frame. Ensure hole is 6mm deep to accommodate locking bolt (this may require drilling slightly into sash). If a fixed venting position is required, drill a second bolt hole with no more than 100mm opening.

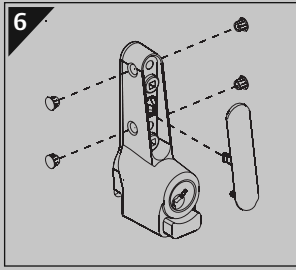
Q50006M 0907-2



Fit lock body and test

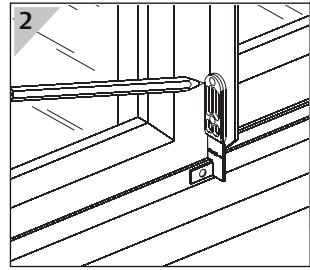
Remove drilling jig from sash. Remove screw cover from lock and fit lock in place using face fixing screws (use packers if required). Check operation of lock in closed and vented positions - if satisfactory, replace screws with one way screws for security.

Note: One way screws cannot be removed once tightened.



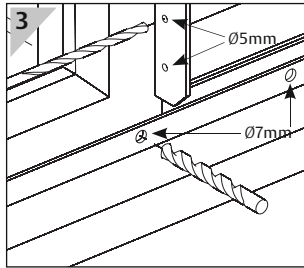
Fit screw cover and side hole plugs

Fit screw cover and side hole plugs to lock body. Ensure sliding window track is clear of any drilling debris which may effect smooth operation of window.




Position side fix drilling jig

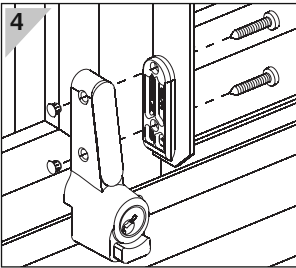
Position drilling jig on the rear vertical frame as shown and ensure notch on drilling jig rests on frame upstand. Bolt hole jig should be bent at 90 degrees to sit flat against frame upstand. Ensure window is firmly closed before marking bolt hole and fixing positions.



Mark and drill holes

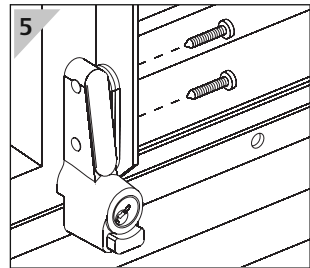
Mark holes and centre punch for drilling accuracy. Drill 5mm clearance holes and 7mm bolt hole in marked positions.

 We suggest drilling a second bolt hole 100mm from the first for a fixed ventilation position.



Mount lock body

Before mounting, use 15mm side fixing screws to form thread in lock body holes, and snap thin end off side packer. Fix lock body to sash using 15mm side fixing screws through sash and packer and into lock body.



Check operation

Check operation of lock in closed and vented positions - if satisfactory, replace screws with one way screws for security.

Note: One way screws cannot be removed once tightened.

6 Repeat Step 6 from face fixing instructions to fit screw cover and side hole plugs

Whitco Warranty

ASSA ABLOY Australia Pty Limited ("ASSA ABLOY") warrants its Whitco products against defects in workmanship and materials for a period of 10 years from the date of purchase by the retail customer, subject to the limitations and exclusions set out in this Warranty. If, within this period the product is found to be defective, and none of the limitations and exclusions set out in this Warranty apply, ASSA ABLOY will supply the same or equivalent product free of charge. This is the only remedy granted by ASSA ABLOY under this Warranty. **Limitations:** All window screen and door screen products are warranted for a period of 12 months from the date of purchase by the retail customer. This limitation does not apply to key locks and hinges included in window screen and door screen products, to which the full ten year warranty applies. **Exclusions:** This Warranty does not cover: 1. Damage to or malfunction or failure of the Whitco product caused or contributed to by: (a) misuse, abuse, accidental or intentional damage; (b) improper installation or failure to follow fitting instructions; (c) improper maintenance; (d) use contrary to instructions provided by ASSA ABLOY; (e) fair wear and tear; (f) any modification or repair which has not been authorized by ASSA ABLOY; (g) use of substitute or replacement parts or cylinders other than genuine ASSA ABLOY parts or cylinders. 2. The cost of: (a) removal, replacement or reinstallation of the Whitco product; (b) freight costs and travelling time; (c) any modification or repairs to a Whitco product, unless authorised by ASSA ABLOY. 3. Damage caused by corrosion when the Whitco product is used in a corrosive environment. 4. Tarnish, damage to or deterioration of soft finishes such as Bronze, Brass and other Antique finishes, which are subject to deterioration due to environmental conditions, frequency of use and other factors. 5. Damage to Gold, Chrome and powder coated finishes caused by damage to the protective layer. 6. Deterioration in colour and performance of polymer materials. 7. Personal injury, property damage or economic loss, however caused.

