

TUCSON[®]

Fluid Dynamics



Tucson 5M, 6M & 8M Energy Efficient Circulating Pumps



ErP
COMPLIANT

Features

- User-friendly control panel
- Suitable for domestic & light commercial applications
- Robust construction
- Compact size
- Easy installation
- 3 years manufacturers warranty

Technical Data

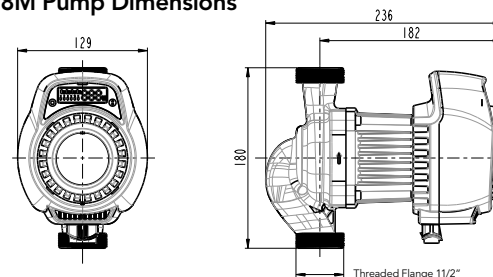
- EEI (Energy Efficiency Index) ≤ 0.23
- Voltage: Single Phase, 230 volts $\pm 10\%$
- Frequency: 50 Hz
- 5M & 6M Speed: 1 to 3 + Auto
- 8M Speed: 1 to 6 + Auto
- Isolation: Class F
- Operating Environment Temperature: 5°C to 40°C
- Minimum and Maximum Fluid Temperatures: 5°C to 95°C
- Max Working Pressure: 10 Bar
- Min Working Pressure: 0.05 Bar @ 50°C
- Waterproof Rating: IP44
- 5 & 6M Pump Weight: 2.35Kg
- 8M Pump Weight: 3.6 Kg
- Body Material: Cast Iron

Accessories Included

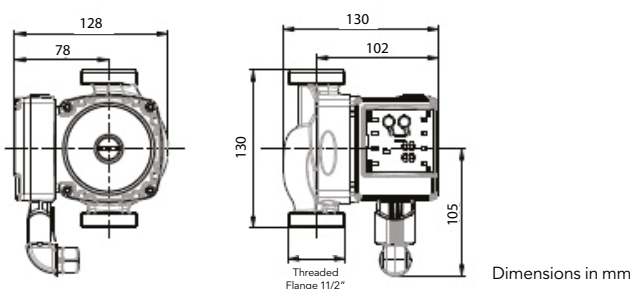
- 5M & 6M - Terminal Plug and Rubber Gaskets
- 8m - Terminal Plug and Rubber Gaskets

CODE	PRODUCT	PALLET QTY	PRICE €
771903	5 Metre Head	256	
771904	6 Metre Head	256	
771902	8 Metre Head	144	

8M Pump Dimensions



5M & 6M Pump Dimensions



General notes - ErP (ecological design) directive
The benchmark for the most efficient circulators is $EEI \leq 0.20$

Tucson 6M Head Bronze Body Energy Efficient Circulating Pump



ErP
COMPLIANT

Features

- User-friendly control panel
- Suitable for domestic & light commercial applications
- Robust construction with corrosion resistant materials
- Compact size
- Easy installation
- 3 years manufacturers warranty

Technical Data

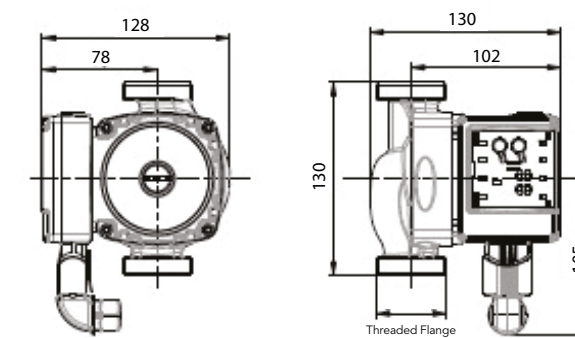
- EEI (Energy Efficiency Index) ≤ 0.23
- Voltage: Single Phase, 230 volts $\pm 10\%$
- Frequency: 50 Hz
- Speed: 1 to 3 + Auto
- Isolation: Class H
- Operating Environment Temperature: 5°C to 40°C
- Minimum and Maximum Fluid Temperatures: 5°C to 110°C
- Max Working Pressure: 10 Bar
- Min Working Pressure: 0.05 Bar @ 50°C
- Waterproof Rating: IP42
- Pump Weight: 2.5 Kg
- Body Material: Bronze

Accessories Included

- Rubber Gaskets

CODE	PRODUCT	PALLET QTY	PRICE €
771917	6 Metre Head	256	

6M Bronze Body Pump Dimensions



Dimensions in mm



Tucson MBP45 600W Modulating Booster Pump

MBP45 Features

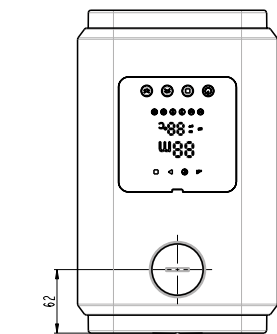
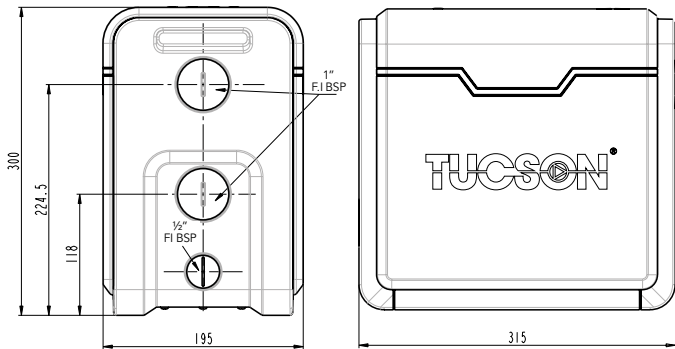
- Automatic multistage centrifugal pumping system
- Constant or modulating select feature
- Pressure or temperature select feature
- Utilises dry run protection feature
- High temperature warning feature
- Ergonomic and compact design
- Easy to install and operate
- Utilises an integrated flow switch
- Utilises an integrated pressure switch
- Utilises an integrated non-return valve
- User friendly integrated control panel
- Powerful & efficient variable speed motor
- Three-year manufacturers product warranty
- High-performance air-cooled motor housing
- Adjustable constant pressure motor controller
- Robust component design and construction
- Suitable for domestic & light commercial applications
- Quiet operation, less than 45 DB at five meters distance

Technical Data

- Motor Size: 0.8 HP / 600 Watt
- Motor Type: Variable Speed
- Rated Head: 25M
- Maximum Head: 45M
- Maximum Pressure: 4.5 Bar
- Maximum Flowrate / Q Max: 4.5M Cubed / 75L/Min
- Minimum and Maximum Fluid Temperatures: 5°C to 95°C
- Operating environment temperature 5 – 50 Degrees
- Motor water proof rating: IP44
- Maximum operating pressure 10 Bar
- Insulation class-F
- Pump weight: 14.2 Kg
- Inlet and Outlet connection sizing – 1" FI BSP

CODE	PRODUCT	PALLET QTY	PRICE €
771918	MBP45	24	

MBP-45 Pump Dimensions



Dimensions in mm

Tucson SBP90 370W Booster Pump

SBP90 Features

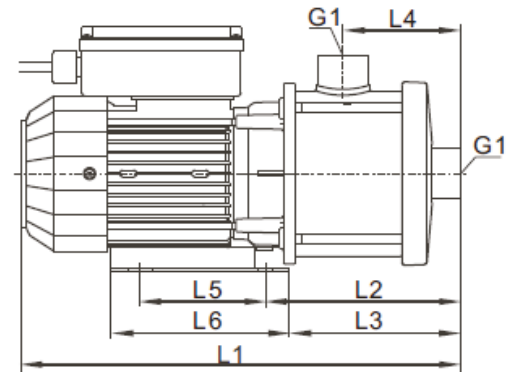
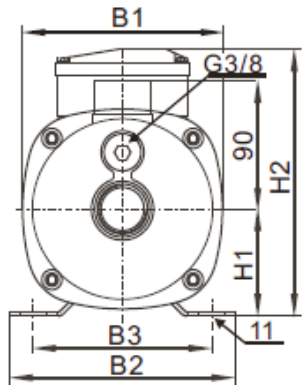
- Compact design
- Powerful & efficient
- Easy to install and operate
- Utilises dry run protection
- Utilises an integrated flow switch
- Utilises an integrated pressure switch
- Utilises an integrated non-return valve
- Adjustable start-up pressure controller
- User friendly unintegrated control panel
- High-performance air-cooled motor housing
- Automatic multistage centrifugal pumping system
- Suitable for domestic & light commercial applications
- Robust construction with stainless steel bodied pump
- Quiet operation, less than 45 DB at five meters distance
- 3 years manufacturers warranty

Technical Data

- Motor Size: ½ HP / 370 Watt
- Motor Type: Induction
- Rated Head: 33M
- Maximum Head: 37M
- Maximum Pressure: 3.7 Bar
- Maximum Flowrate / Q Max: 4 M Cubed / 66.6 L/Min
- Maximum Fluid Temperture: 50°C
- Operating environment temperature 5 – 50°C
- Motor water proof rating: IP55
- Controller water proof rating: IP65
- Controller Maximum operating pressure 10 Bar
- Insulation class-F
- Pump weight: 9.2 Kg
- Inlet and Outlet connection sizing: 1" FI BSP & 1" MI BSP

CODE	PRODUCT	PALLET QTY	PRICE €
771909	SBP-90	28	

SBP-90 Pump Dimensions



B1	B2	B3	H1	H2	L1	L2	L3	L4	L5	L6	G1
140	158	125	75	174	318	131	113	72	96	136	1" FI BSP

Dimensions in mm

Tucson SBP100 550W Booster Pump



SBP100 Features

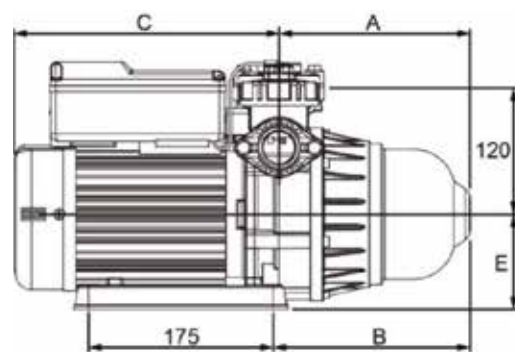
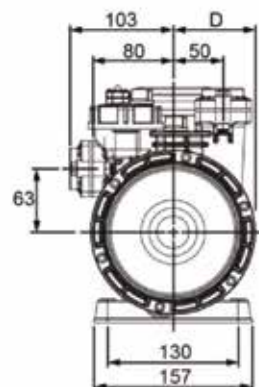
- Compact design
- Powerful & efficient
- Easy to install and operate
- Utilises dry run protection
- Utilises an auto initiate function
- Utilises an integrated flow switch
- Utilises an integrated pressure vessel
- Utilises an integrated pressure switch
- Utilises an integrated non-return valve
- Utilises a super-low flow start function
- User friendly integrated control panel
- Adjustable start-up pressure controller
- High-performance air-cooled motor housing
- Automatic multistage centrifugal pumping system
- Suitable for domestic & light commercial applications
- Robust construction with corrosion resistant materials
- Quiet operation, less than 55 DB at five meters distance
- 3 years manufacturers warranty

Technical Data

- Motor Size: ¾ HP / 550 Watt
- Motor Type: Induction
- Rated Head: 23M
- Maximum Head: 32M
- Maximum Pressure: 3.2 Bar
- Maximum Flowrate / Q Max: 4.4M Cubed / 73.3 L/Min
- Maximum Fluid Temperature: 50°C
- Operating environment temperature 5 – 50°C
- Water proof rating: IP54
- Insulation class-F
- Pump weight: 11.5 Kg
- Inlet and Outlet connection sizing: 1" FI BSP

CODE	PRODUCT	PALLET QTY	PRICE €
771908	SBP-100	30	

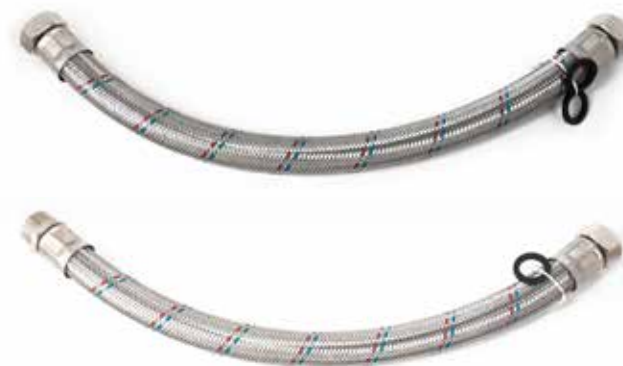
SBP-100 Pump Dimensions



A	B	C	D	E	G1
182	188	252	82	90	1" FI BSP

Dimensions in mm

Pump Accessories



Tucson Flexible Connection Pump Hoses WRAS Approved EPDM

Component Material:
CW617N Brass, Stainless Steel Braided, EPDM Rubber

CODE	SIZE	HOSE LENGTH	BOX QTY	PRICE €
771481	1" BSP MI x FI	500mm	50	
771482	1" BSP FI x FI	500mm	50	
771483	1" BSP MI x FI	750mm	50	
771484	1" BSP FI x FI	750mm	50	

All hoses are supplied with gasket washers



Tucson Lever Action Pump Valves

Component Material:
Chrome Plated CW617N Brass Valve with Carbon Steel Handle

CODE	SIZE	BOX QTY	PRICE €
771961	1½" BSP x ¾" CxC	50	
771962	1½" BSP x 1" CxC	50	
771963	1½" BSP x 22mm CxC	50	
771964	½" BSP x 28mm CxC	50	
771965	1½" BSP x ¾" FI	50	
771966	1½" BSP x 1" FI	50	

All valves are supplied with gasket washers



MPS1



APS1



APS2

Pressure Switches

CODE	SIZE	BOX QTY	PRICE €
771900	MPS1 - Pressure Switch Manual	50	
771901	APS1 - Automatic Pressure Switch 1	12	
771907	APS2 - Automatic Pressure Switch 2	12	



Instantor[®]

T 01 842 6255 E sales@instantor.ie

www.instantor.ie

Sanbra Fyffe Ltd.

Instantor Works, Santry Avenue, Santry, Dublin D09 K160



Make the connection with us socially

Superior Plumbing Products
Manufactured by Sanbra Fyffe

21.01 - Unpriced