



# Straight ball valve

## ► SF 1570

Male-female straight ball valve, butterfly operation (orange)

### ■ PRESENTATION

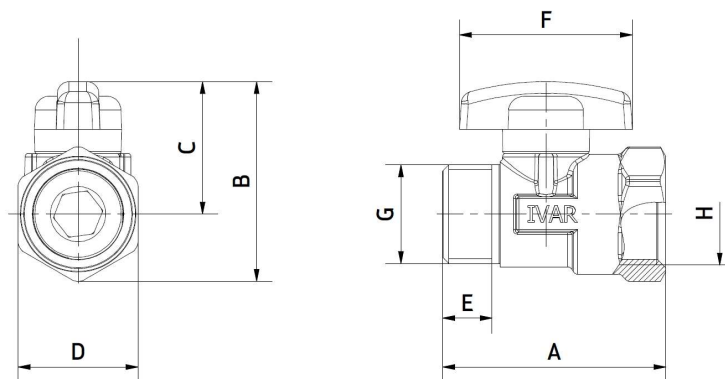


Male-female straight ball valve with 1/2" F and 1/2" M connections.

### ■ MATERIALS

- Brass components: CW617N
- Knob: PA6 +15% FV
- O-ring: perox EPDM

### ■ DIMENSIONS



| Art.    | Cod.   | A     | B    | C    | D        | E  | F  | G     | H     |
|---------|--------|-------|------|------|----------|----|----|-------|-------|
| SF 1570 | 500379 | 46,50 | 41.6 | 27.6 | ES.CH.26 | 10 | 36 | G1/2" | G1/2" |

## ■ SPECIFICATION SUMMARY

**IVAR SF 1570 500379:** straight ball valve with male 1/2" - female 1/2" connections and butterfly operation. Brass body CW617N and knob in PA6 +15% FV.

## ■ CODES

|               |  |
|---------------|--|
| <b>500379</b> | Male-female straight ball valve, butterfly operation (orange). Connections: 1/2" F x 1/2" M. |
|---------------|--|

---

### **IVAR S.p.A.**

Via IV Novembre, 181  
25080 Prevalle (BS), Italy  
T. +39 030 68028 – F. +39 030 68 01 329  
info@ivar-group.com – www.ivar-group.com

*IVAR S.p.A. reserves the right to make improvements and changes to the products and related documentation at any time and without notice. All rights reserved. Reproduction in whole or in part is prohibited without the prior consent of the copyright owner.*