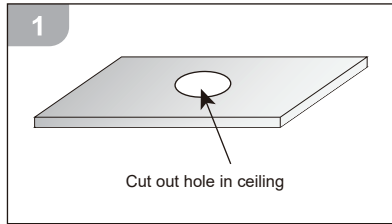
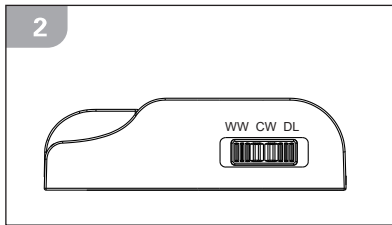


# INSTALLATION INSTRUCTIONS

Installation: Before installation, please make sure the power is off.

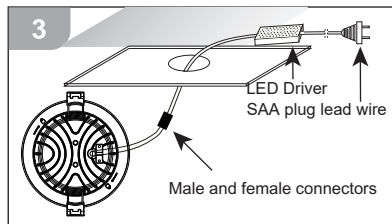


1. Cut out 90mm hole in the ceiling. Ensure there is sufficient clearance in the area where you will position the fitting.

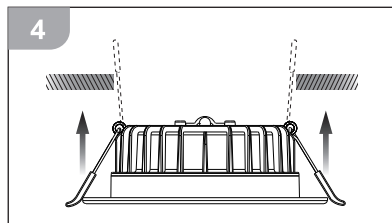


2. Choose the preferred colour temperature via switch on the driver.

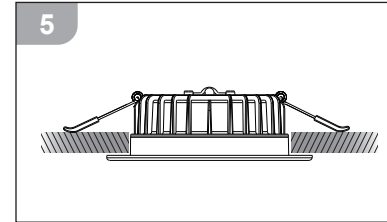
Left	WW/3000K
Middle	CW/4000K
Right	DL/5700k



3. Connect fitting to the mains via power plug. 6m cable can be connected between the male and female connectors to extend the installation distance of the lamp head.



4. Fit the fixture in the ceiling by lifting the springs clips upwards



5. Once in place the clips should spring down against the top of the ceiling and support the fitting.

## IC-4. IC-F ABUTTED & COVERED:

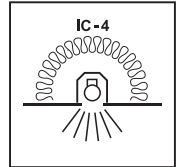
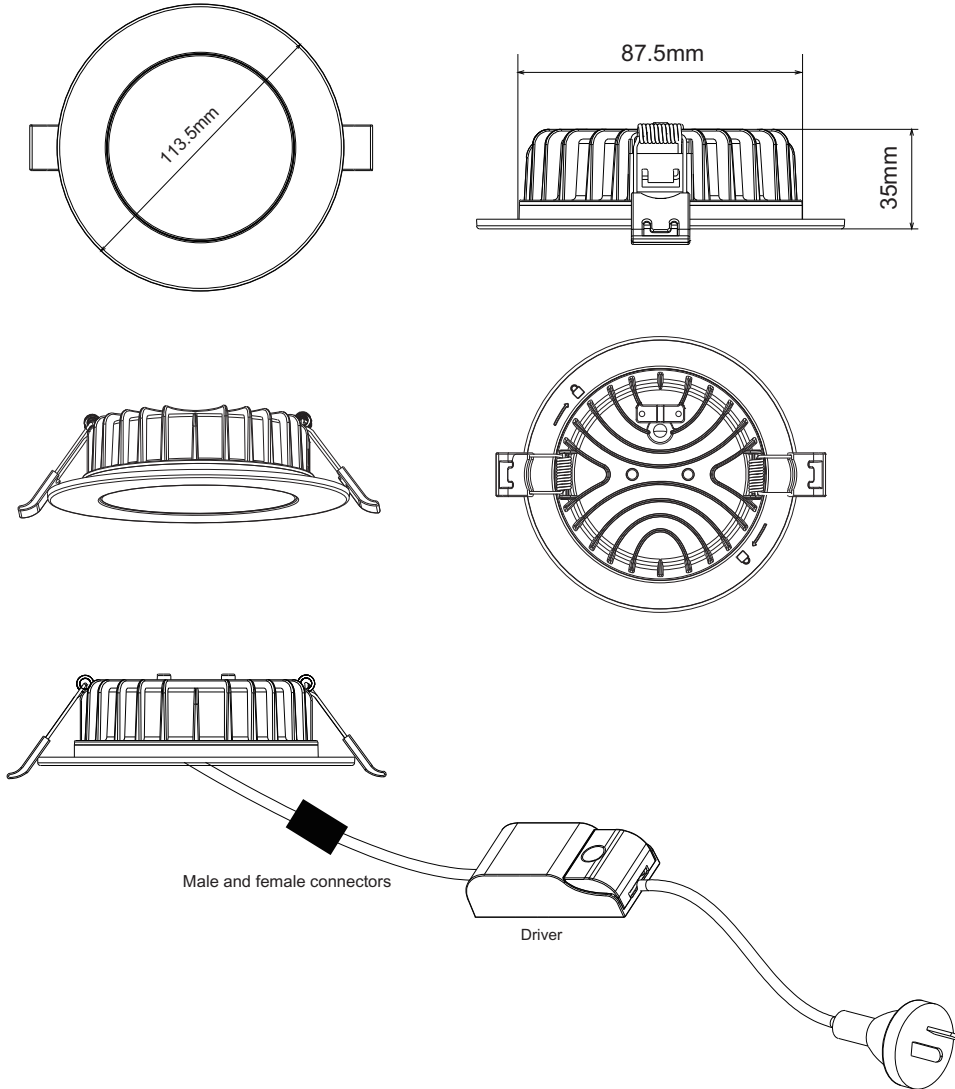
This downlight kit is tested to AS/NZS 60598.2. 2:2001 IC-F standards & AS/NZS 60598.2.2:2016 IC-4 standards. Loose fill insulation and building structural member are permitted to abut or cover this luminaire.

## CAUTION!



Electrical products must not be thrown out with domestic waste. They must be taken to a communal collecting point for environmentally friendly disposal in accordance with local regulations. Contact your local authorities or stockist for advice the packaging in an environmentally friendly manner and make it available for the recycable material collection service.

# PATIO



## SPECIFICATION

Rated Voltage: 220-240V ~, 50/60Hz

Model No.	Wattage	Faceplate	Colour Temperature	Lumen	IP Rating	Cutout
5504026	12W	Flat white	3000K/4000K/5700K	900/950/1000lm	IP44	90mm

## TESTED & RECOMMENDED DIMMERS

Dimmer Brands	Code	
DIGINET	MMDM/RT	✓
DIGINET	MEDM	✓
Clipsal	32ELEDM	✓
Clipsal-Trailing Edge	32E450TM	✓

May work with other untested dimmers and please check with a licenced electrician for Min and Max dimmer load.