

# Eaton FlexPDU G2

Basic

Metered

Switched

Managed



**EAT•N**

*Powering Business Worldwide*

# Overview

The Eaton Flex PDU G2 provides a range of standardized rack power distribution units (PDUs), including basic, metered, switched, and managed models, designed to enhance the safety, manageability, and energy efficiency across edge facilities and distributed IT infrastructure.

## Features

**Enhanced power distribution safety:** All outlets are equipped with anti-ejection mechanisms to prevent accidental server downtime caused by unintended disconnections

**Strengthened cybersecurity:** Communication modules comply with global cybersecurity standards UL 2900-1 and IEC 62443-4-1

**High-temperature resilience:** Capable of stable operation in ambient temperatures up to 50°C

**Easy installation & deployment:** Compact form factor design to maximize the available space at the rear of server racks

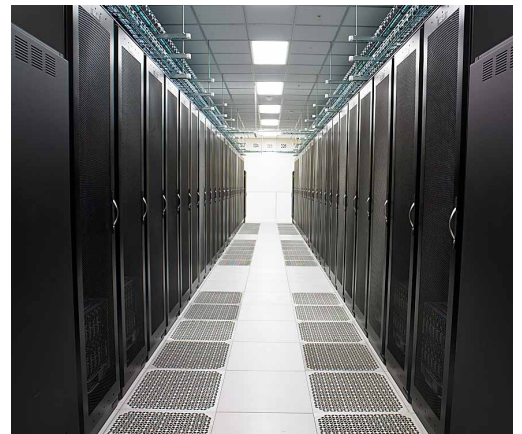
**Streamlined remote monitoring:** Compatible with third-party monitoring platforms and Eaton monitoring software

**Streamlined on-site operations & maintenance:** Hot-swappable network communication and actuator modules allow for replacement without interrupting operations

**Global certifications:** CE certified for international market compliance

## Typical Applications & Industries

- Small and medium data centers and server rooms
- Colocation and large-scale data centers
- Manufacturing
- Telecommunication
- Commercial buildings
- Healthcare
- Distributed IT



# Functional Features of Different PDU Models

		Basic	Metered Input	Switched	Managed
Basic features	Compact form factor	✓	✓	✓	✓
	Hydraulic-magnetic circuit breakers (models ≥ 32A) provided	✓	✓	✓	✓
	Anti-ejection outlets	✓	✓	✓	✓
	Pure copper used for main circuit conductors	✓	✓	✓	✓
	Additional enclosure grounding points provided	✓	✓	✓	✓
Network capabilities	Hot-swappable network Management module		✓	✓	✓
	Supporting remote firmware upgrade		✓	✓	✓
	Full-featured network management through Web or SNMP		✓	✓	✓
	Supported protocols and standards: HTTPS, SSH v2, SNMP, SMTP, DHCP, RADIUS, NTP, TELNET, as well as IPv4 and IPv6		✓	✓	✓
	Ethernet port speed		10/100 Mbs	10/100 Mbs	10/100 Mbs
	External sensor capacity		8	8	8
	Meeting UL 2900-1 and IEC 62443-4-1 cybersecurity standards		✓	✓	✓
Monitoring function	Cascade connection function		✓	✓	✓
	Measurement accuracy		±1%	±1%	±1%
	Full PDU measurements (current, voltage, power, energy consumption, power factor, etc.)		✓	✓	✓
	Remote on/off outlet switching			✓	✓
	User-defined power-on/power-off sequence and delay intervals of each outlet			✓	✓
	Grouped outlet control			✓	✓
Operating environment	Per-outlet measurements (current, power, energy consumption, power factor, etc.)				✓
	Maximum operating temperature	50°C	50°C	50°C	50°C
	Operating altitude	0–3 000 m	0–3 000 m	0–3 000 m	0–3 000 m
Warranty	Warranty period	2 years	2 years	2 years	2 years



Conforms to UL 2900-1 and IEC 62443-4-1 cybersecurity



Pure copper conductor



Anti-ejection outlet



Hydraulic-magnetic circuit breaker



**1%**

measurement accuracy

**8**

external sensors at the maximum

**2-years**

warranty

**CE**

EN 62368-1:2014

# Modular Hot-swappable Core Components to Ensure Business Continuity and Safety

## LCD display

Real-time display of power loads, anomaly alerts, and communication address among other key information

## Modbus port

Supporting Modbus RTU communication protocol over RS-485 bus standard

## Network port

Built-in switch function  
Supporting HTTPS, TELNET, SSH, and SNMP protocols

## USB sensor port

Connecting 1 temperature/humidity sensor or up to 8 sensors via an extender



## Hot-swappable actuator module



Monitoring the power metrics of 8 outlets and control their on/off switching

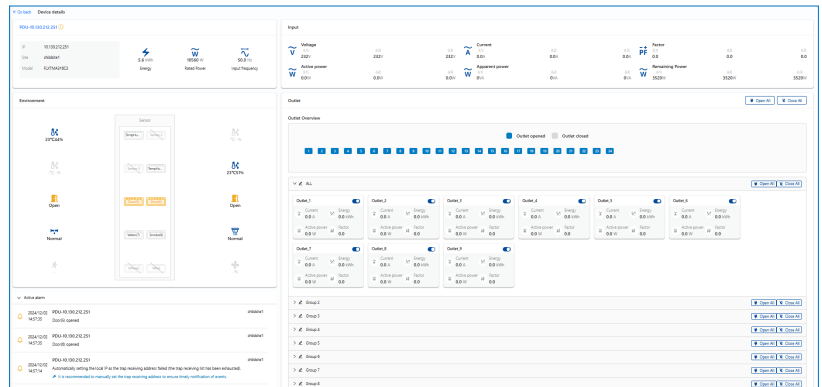


Compact design for high-density outlets applications

# Remote Access to Your Intelligent PDU

The FlexPDU G2 network management module provides the following online functions:

- Real-time tracking of power & environmental data of the PDU
- PDU load monitoring with billing-grade accuracy ( $\pm 1\%$ )
- Remote outlet switching & load balancing control
- Supporting SNMP v1/v2c/v3 communication protocols, compatible with third-party platforms and Eaton monitoring software
- Password protection
- User-defined alarms



## Standard PDU Models

### Basic

Model	Mounting type	Phase	Input type / rated value (A)	Power	Circuit breaker configuration	Outlet configuration (quantity & type)	Cable length
FLXTBAC14C1	1U horizontal	1P	IEC C14 10A	2.3kW	/	(8)C13	2.5 M
FLXTBAC20C1	1U horizontal	1P	IEC C20 16A	3.7kW	/	(8)C13	2.5 M
FLXTBA116C2	0U vertical	1P	IEC60309 16A	3.7kW	/	(20)C13 + (4)C19	3.0 M
FLXTBA132C2	0U vertical	1P	IEC60309 32A	7.4kW	2 * 16A single-pole	(20)C13 + (4)C19	3.0 M
FLXTBA316C5	0U vertical	3P	IEC60309 16A	11.0kW	/	(36)C13 + (6)C19	3.0 M
FLXTBA332C5	0U vertical	3P	IEC60309 32A	22.0kW	6 * 16A single-pole	(36)C13 + (6)C19	3.0 M
FLXTBAC20C2	0U vertical	1P	IEC C20 16A	3.7kW	/	(20)C13 + (4)C19	2.5 M

## Metered Input

Model	Mounting type	Phase	Input type / rated value (A)	Power	Circuit breaker configuration	Outlet configuration (quantity & type)	Cable length
FLXTMIC14C1	1U horizontal	1P	IEC C14 10A	2.3kW	/	(8)C13	2.5 M
FLXTMIC20C1	1U horizontal	1P	IEC C20 16A	3.7kW	/	(8)C13	2.5 M
FLXTMI116C2	0U vertical	1P	IEC60309 16A	3.7kW	/	(20)C13 + (4)C19	3.0 M
FLXTMI132C2	0U vertical	1P	IEC60309 32A	7.4kW	2 x 16A single-pole	(20)C13 + (4)C19	3.0 M
FLXTMI316C3	0U vertical	3P	IEC60309 16A	11.0kW	/	(18)C13 + (6)C19	3.0 M
FLXTMI332C3	0U vertical	3P	IEC60309 32A	22.0kW	6 x 16A single-pole	(18)C13 + (6)C19	3.0 M

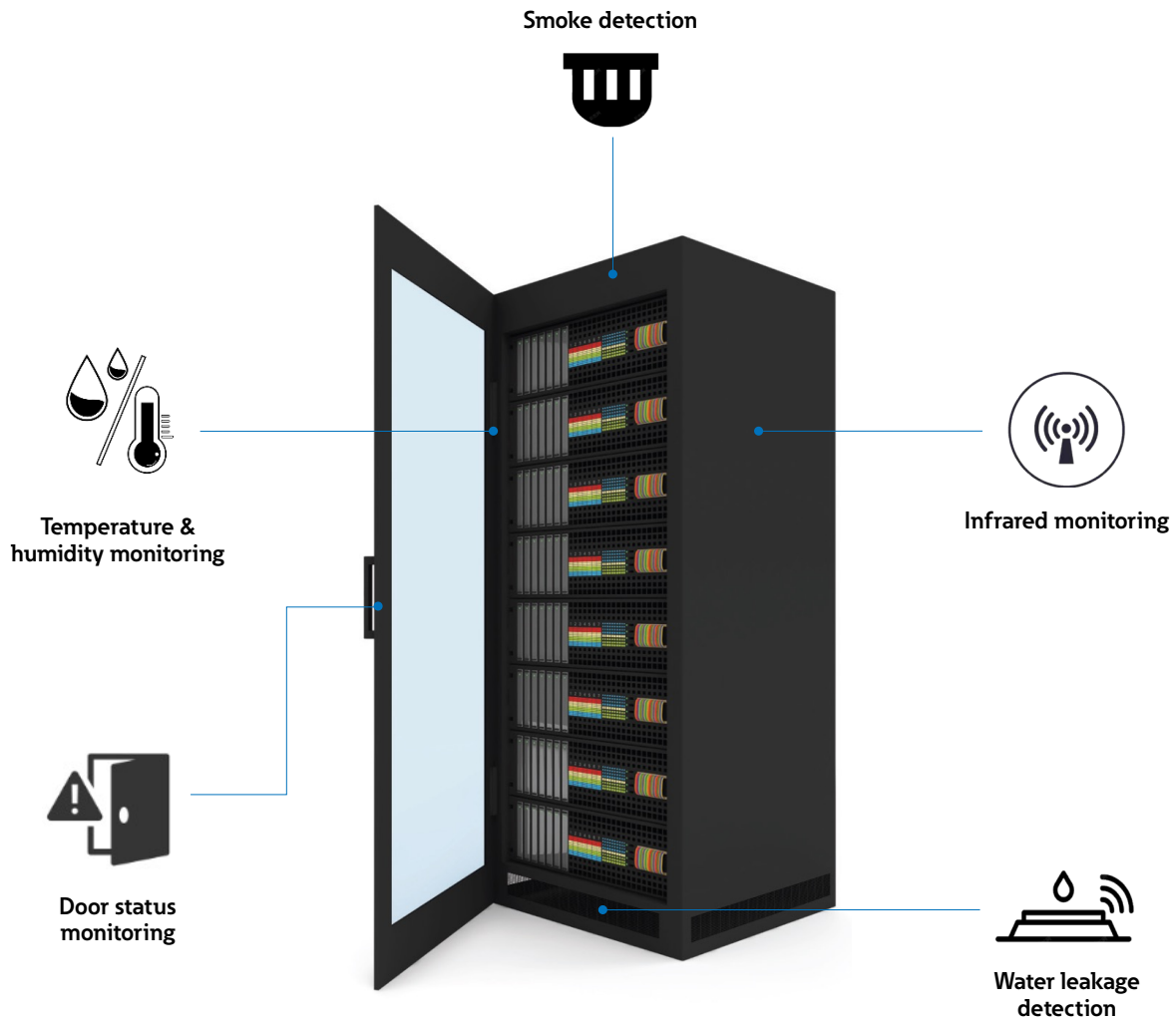
## Switched

Model	Mounting type	Phase	Input type / rated value (A)	Power	Circuit breaker configuration	Outlet configuration (quantity & type)	Cable length
FLXTSWC20C1	1U horizontal	1P	IEC C20 16A	3.7kW	/	(8)C13	2.5 M

## Managed

Model	Mounting type	Phase	Input type / rated value (A)	Power	Circuit breaker configuration	Outlet configuration (quantity & type)	Cable length
FLXTMA116C2	0U vertical	1P	IEC60309 16A	3.7kW	/	(20)C13 + (4)C19	3.0 M
FLXTMA132C2	0U vertical	1P	IEC60309 32A	7.4kW	2 x 16A single-pole	(20)C13 + (4)C19	3.0 M
FLXTMA332C5	0U vertical	3P	IEC60309 32A	22.0kW	6 x 16A single-pole	(36)C13 + (6)C19	3.0 M
FLXTMA316C3	0U vertical	3P	IEC60309 16A	11.0kW	/	(18)C13 + (6)C19	3.0 M

# Environmental & Access Security Management



## PDU accessories

Model	Accessories	Description
FLXTTH	Temperature & humidity sensor	Real-time temperature and humidity monitoring with alerts to prevent equipment downtime
FLXTDORS	Door status sensor	Monitoring the door status in real time and promptly triggering alerts to enhance security
FLXTWATS	Water leak sensor	Detecting liquid leaks in real time to minimize the upkeep cost
FLXTSMOS	Smoke sensor	Continuously detecting smoke inside cabinets
FLXTINFS	Infrared sensor	Monitoring the opening status of cabinet doors, side panels, top panels, and other components using infrared sensors