



Powering Business Worldwide

SITE PLANNING DATA 9395P 600-300KVA



Page 1

Dimensional Drawings

Page 2

Customer Connections

Page 3

Isometric View of Customer Connections

Page 4

Electrical Wiring of single unit

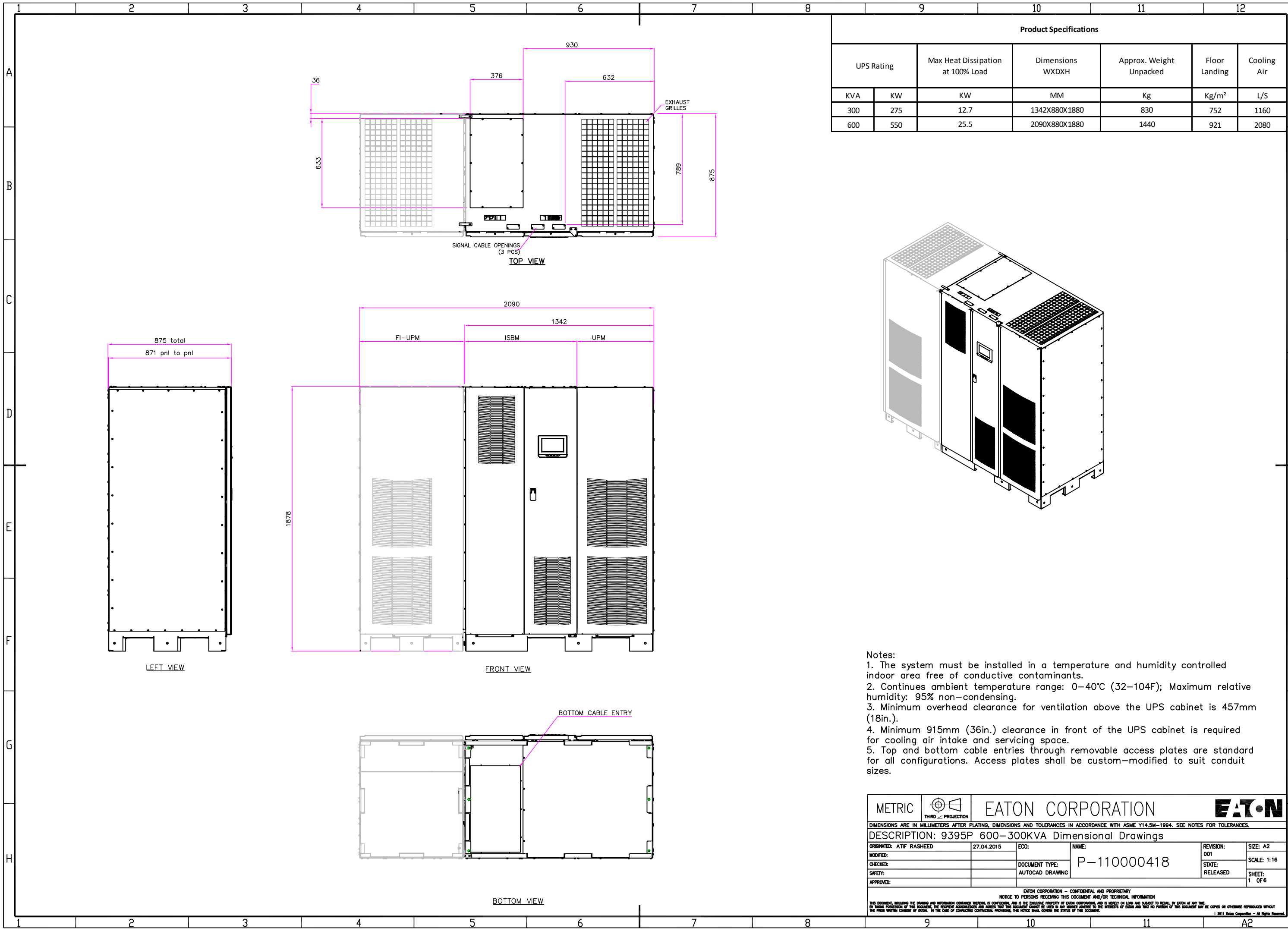
Page 5

Electrical & Signal Wiring of Parallel Units

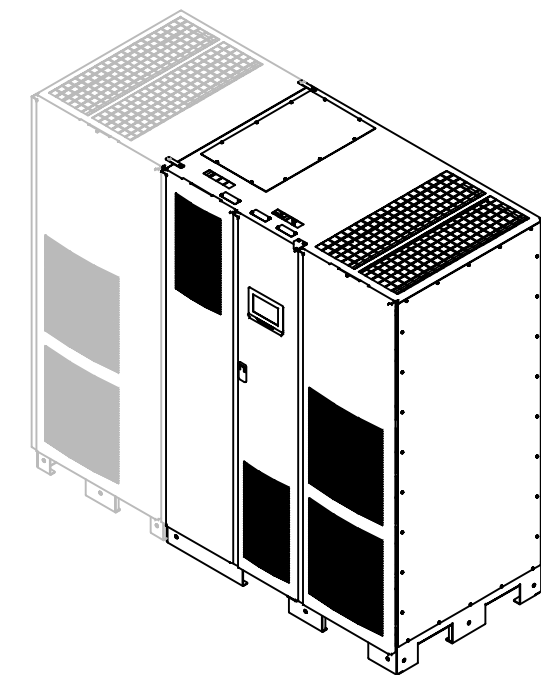
Page 6

Product Specifications

METRIC		THIRD ANGLE PROJECTION		EATON CORPORATION			
<small>DIMENSIONS ARE IN MILLIMETERS AFTER PLATING, DIMENSIONS AND TOLERANCES IN ACCORDANCE WITH ASME Y14.5M-1994. SEE NOTES FOR TOLERANCES.</small>							
DESCRIPTION: 9395P 600-300KVA							
ORIGINATED: ATIF RASHEED	27.04.2015	ECO:	NAME:	REVISION: 001	SIZE: A2		
CHECKED:		DOCUMENT TYPE:	P-110000418	STATE: RELEASED	SCALE: 1:1		
SAFETY:		APPROVED:			SHEET: OF		
<small>EATON CORPORATION - CONFIDENTIAL AND PROPRIETARY NOTICE TO PERSONS RECEIVING THIS DOCUMENT AND/OR TECHNICAL INFORMATION THIS DOCUMENT, INCLUDING THE DRAWING AND INFORMATION CONTAINED THEREIN, IS CONFIDENTIAL AND IS THE EXCLUSIVE PROPERTY OF EATON CORPORATION, AND IS LOANED AND SUBJECT TO RECALL BY EATON AT ANY TIME. BY TAKING POSSESSION OF THIS DOCUMENT, THE RECIPIENT ACKNOWLEDGES AND AGREES THAT THIS DOCUMENT CANNOT BE USED IN ANY MANNER UNLESS TO THE INTERESTS OF EATON AND THAT NO PORTION OF THIS DOCUMENT MAY BE COPIED OR OTHERWISE REPRODUCED WITHOUT THE PRIOR WRITTEN CONSENT OF EATON. IN THE CASE OF CONFLICTING CONTRACTUAL PROVISIONS, THIS NOTICE SHALL GOVERN THE STATUS OF THIS DOCUMENT. © 2011 Eaton Corporation - All Rights Reserved.</small>							

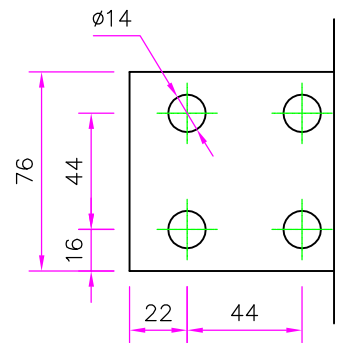


Product Specifications						
UPS Rating		Max Heat Dissipation at 100% Load	Dimensions WXD _X H	Approx. Weight Unpacked	Floor Landing	Cooling Air
KVA	KW	KW	MM	Kg	Kg/m ²	L/S
300	275	12.7	1342X880X1880	830	752	1160
600	550	25.5	2090X880X1880	1440	921	2080

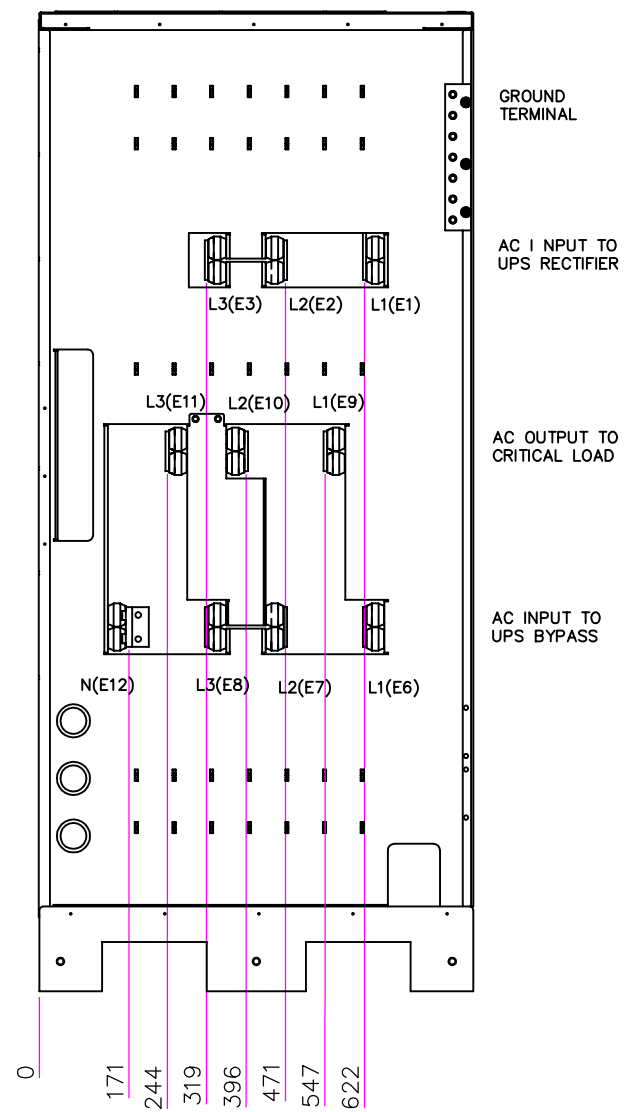
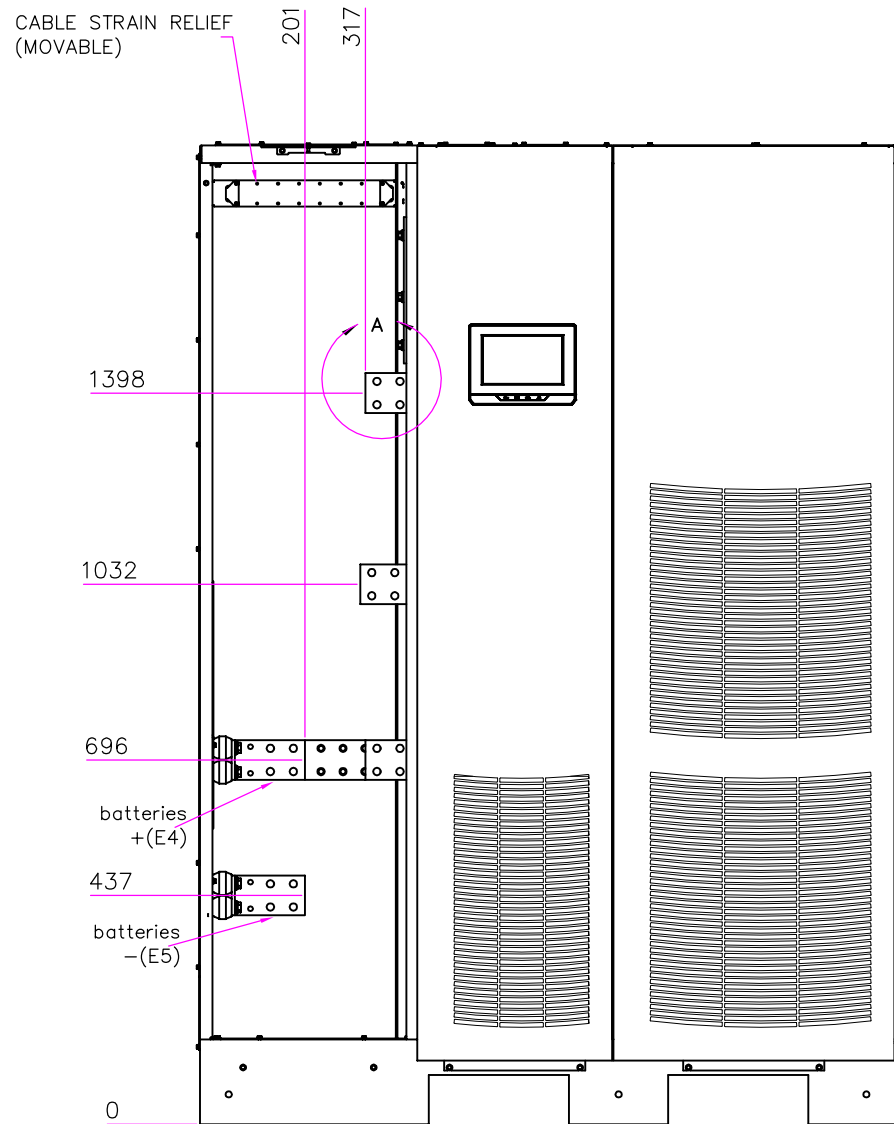


- Notes:
- The system must be installed in a temperature and humidity controlled indoor area free of conductive contaminants.
 - Continues ambient temperature range: 0–40°C (32–104F); Maximum relative humidity: 95% non-condensing.
 - Minimum overhead clearance for ventilation above the UPS cabinet is 457mm (18in.).
 - Minimum 915mm (36in.) clearance in front of the UPS cabinet is required for cooling air intake and servicing space.
 - Top and bottom cable entries through removable access plates are standard for all configurations. Access plates shall be custom-modified to suit conduit sizes.

METRIC	THIRD ANGLE PROJECTION	EATON CORPORATION		EATON	
DIMENSIONS ARE IN MILLIMETERS AFTER PLATING, DIMENSIONS AND TOLERANCES IN ACCORDANCE WITH ASME Y14.5M-1994. SEE NOTES FOR TOLERANCES.					
DESCRIPTION: 9395P 600–300KVA Dimensional Drawings					
ORIGINATED: ATIF RASHEED	27.04.2015	ECO:	NAME:	REVISION: 001	SIZE: A2
MODIFIED:		DOCUMENT TYPE:	P-110000418	STATE: RELEASED	SCALE: 1:16
CHECKED:		SHEET:			SHEET: 1 OF 6
SAFETY:					
APPROVED:					
<small>EATON CORPORATION – CONFIDENTIAL AND PROPRIETARY NOTICE TO PERSONS RECEIVING THIS DOCUMENT AND/OR TECHNICAL INFORMATION THIS DOCUMENT, INCLUDING THE DRAWING AND INFORMATION CONTAINED THEREIN, IS CONFIDENTIAL AND IS THE EXCLUSIVE PROPERTY OF EATON CORPORATION AND IS LOANED TO YOU BY EATON AT ANY TIME. BY YOUR POSSESSION OF THIS DOCUMENT, YOU HEREBY ACKNOWLEDGE AND AGREE THAT THIS DOCUMENT CANNOT BE USED IN ANY MANNER CONTRARY TO THE INTERESTS OF EATON AND THAT NO PORTION OF THIS DOCUMENT MAY BE COPIED OR OTHERWISE REPRODUCED WITHOUT THE PRIOR WRITTEN CONSENT OF EATON. IN THE CASE OF CONFLICTING CONTRACTUAL PROVISIONS, THIS NOTICE SHALL GOVERN THE STATUS OF THIS DOCUMENT. © 2011 Eaton Corporation – All Rights Reserved.</small>					



Detail View A
Scale 2:1

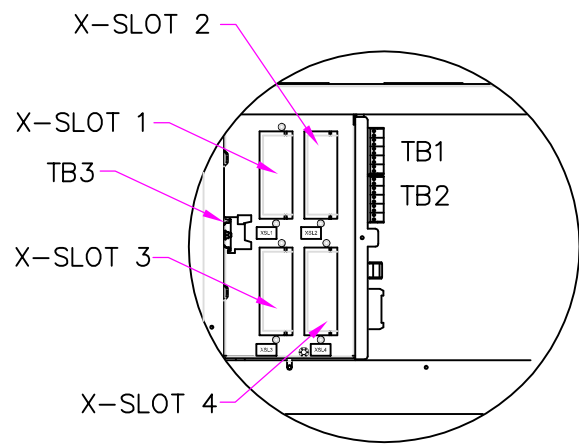


Note:

- The Bus Bars are Tin coated and suitable for both Cu and Al connections.

METRIC		THIRD ANGLE PROJECTION		EATON CORPORATION		EATON	
DIMENSIONS ARE IN MILLIMETERS AFTER PLATING, DIMENSIONS AND TOLERANCES IN ACCORDANCE WITH ASME Y14.5M-1994. SEE NOTES FOR TOLERANCES.							
DESCRIPTION: 9395P 600-300KVA Customer Connections							
ORIGINATED: ATIF RASHEED	27.04.2015	ECO:	NAME:	REVISION: 001	SIZE: A2		
MODIFIED:				STATE: RELEASED	SCALE: 1:10		
CHECKED:		DOCUMENT TYPE:	P-110000418	SHEET: 2 OF 6			
SAFETY:		AUTOCAD DRAWING					
APPROVED:							
<small>EATON CORPORATION - CONFIDENTIAL AND PROPRIETARY NOTICE TO PERSONS RECEIVING THIS DOCUMENT AND/OR TECHNICAL INFORMATION THIS DOCUMENT, INCLUDING THE DRAWING AND INFORMATION CONTAINED THEREIN, IS CONFIDENTIAL AND IS THE EXCLUSIVE PROPERTY OF EATON CORPORATION, AND IS LOANED AND SUBJECT TO RECALL BY EATON AT ANY TIME. BY THEIR POSSESSION OF THIS DOCUMENT, THE RECEIPIER ACKNOWLEDGES AND AGREES THAT THIS DOCUMENT CANNOT BE USED IN ANY MANNER HARMFUL TO THE INTERESTS OF EATON AND THAT NO PORTION OF THIS DOCUMENT MAY BE COPIED OR OTHERWISE REPRODUCED WITHOUT THE PRIOR WRITTEN CONSENT OF EATON. IN THE CASE OF CONFLICTING CONTRACTS, PROVISIONS, THIS NOTICE SHALL GOVERN THE STATUS OF THIS DOCUMENT. © 2011 Eaton Corporation - All Rights Reserved.</small>							

BEHIND COVERS

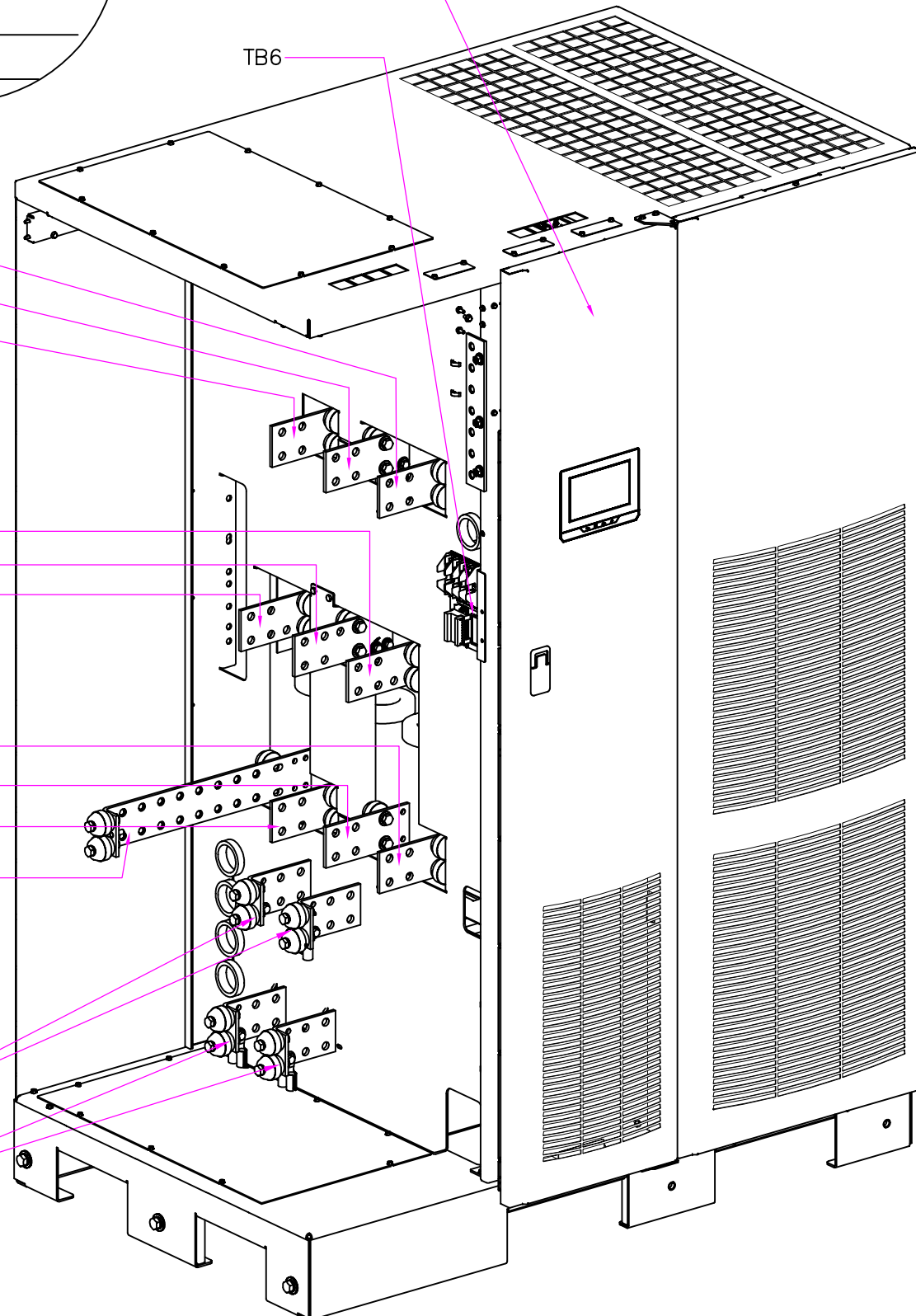


AC INPUT
L3(E3)
L2(E2)
L1(E1)

UPS OUTPUT
L3(E11)
L2(E10)
L1(E9)

BYPASS INPUT
L3(E8)
L2(E7)
L1(E6)
N(E12)

BATTERY CONNECTIONS
+(E4)
-(E5)



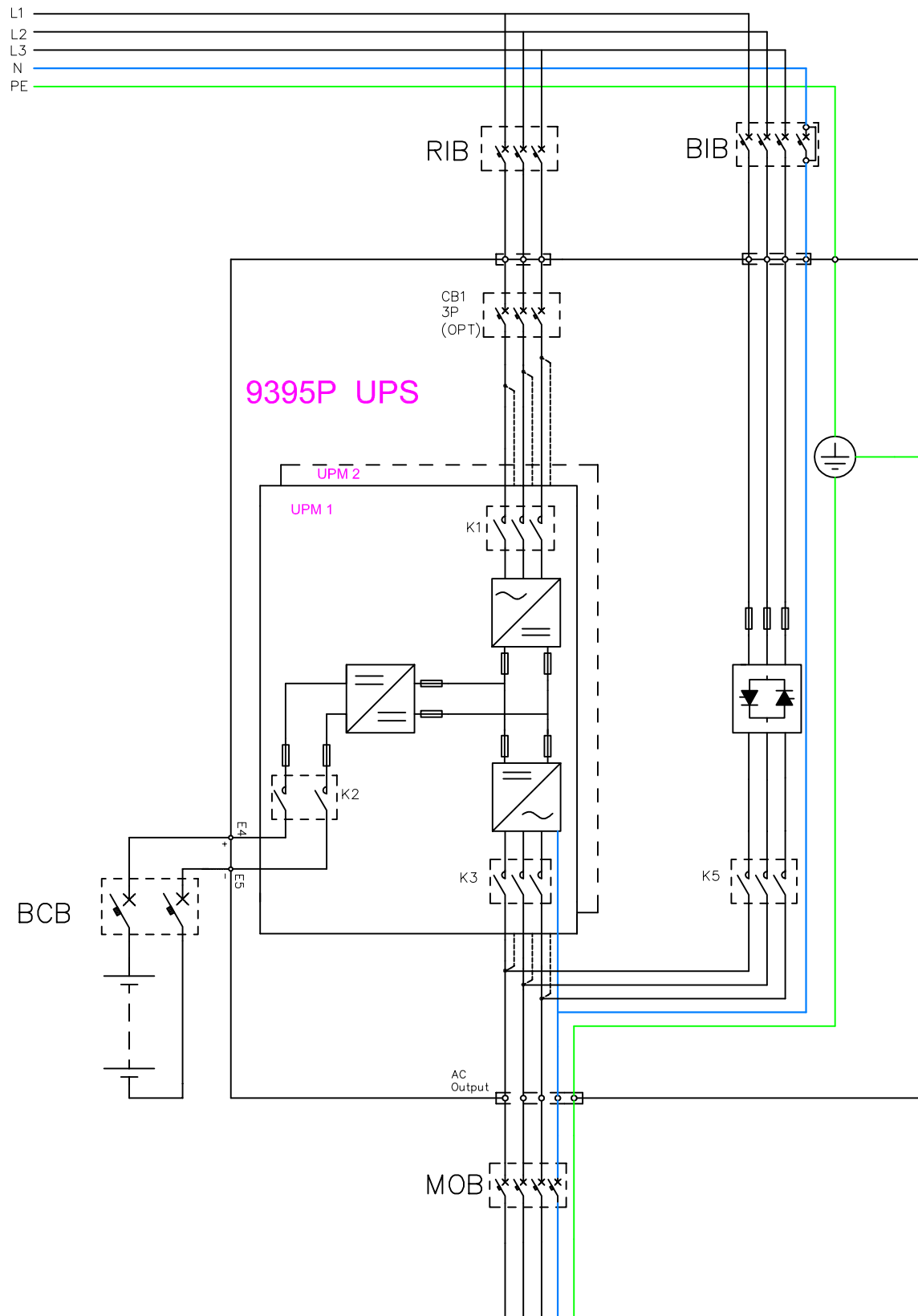
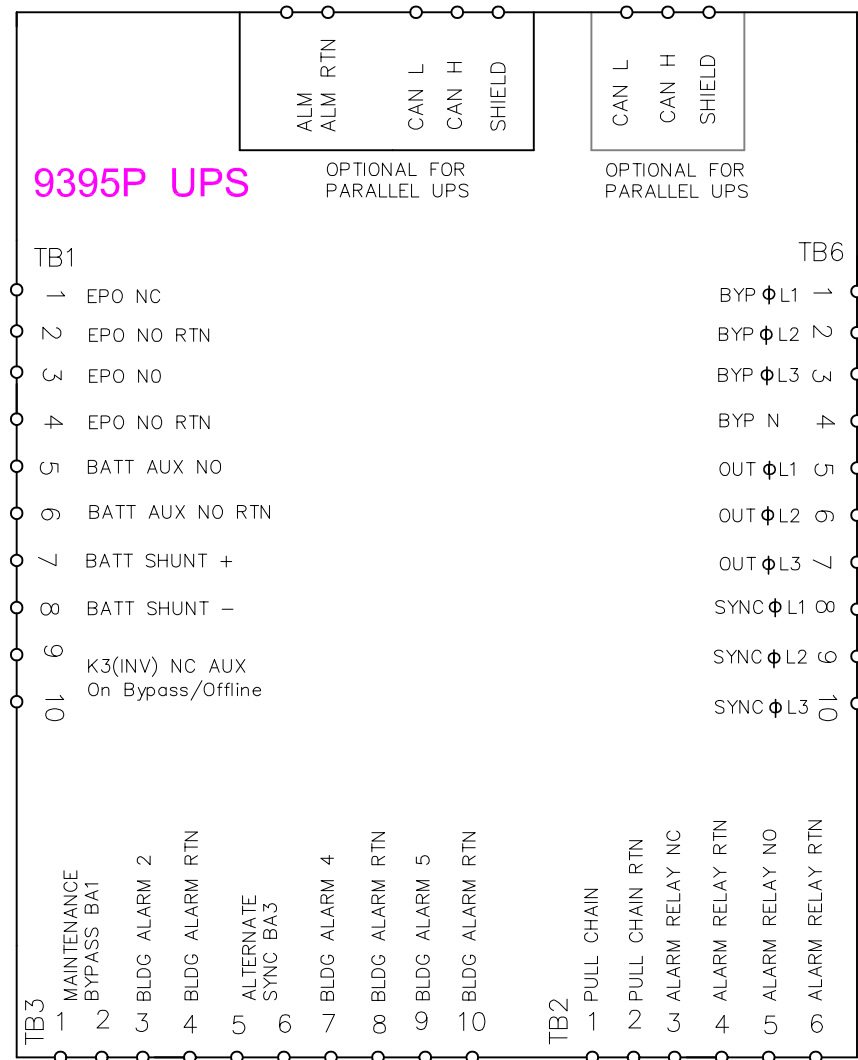
TB1
1 REMOTE EPO NC
2 REMOTE EPO NO RTN
3 REMOTE EPO NO
4 REMOTE EPO NO RTN
5 BATT AUX
6 BATT AUX RTN
7 BATT SHUNT +
8 BATT SHUNT -
9 K3 NC AUX
10 K3 NC AUX

TB2
1 PULL CHAIN
2 PULL CHAIN RTN
3 ALRM RELAY NC
4 ALRM RELAY RTN
5 ALRM RELAY NO
6 ALRM RELAY RTN

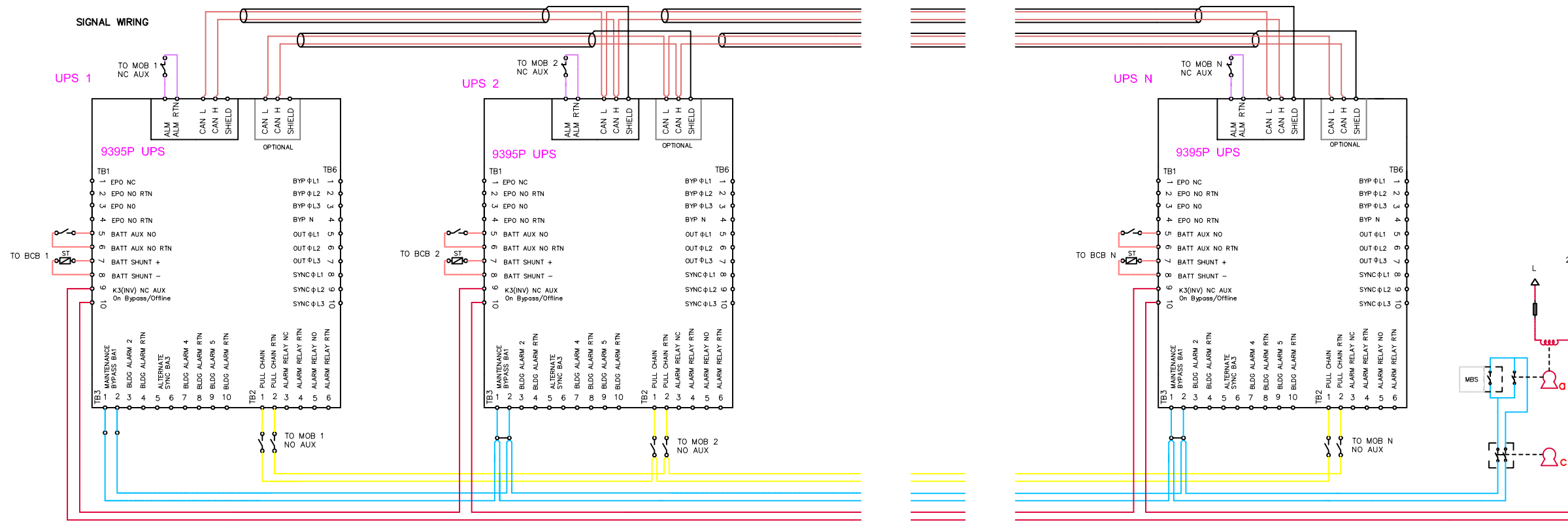
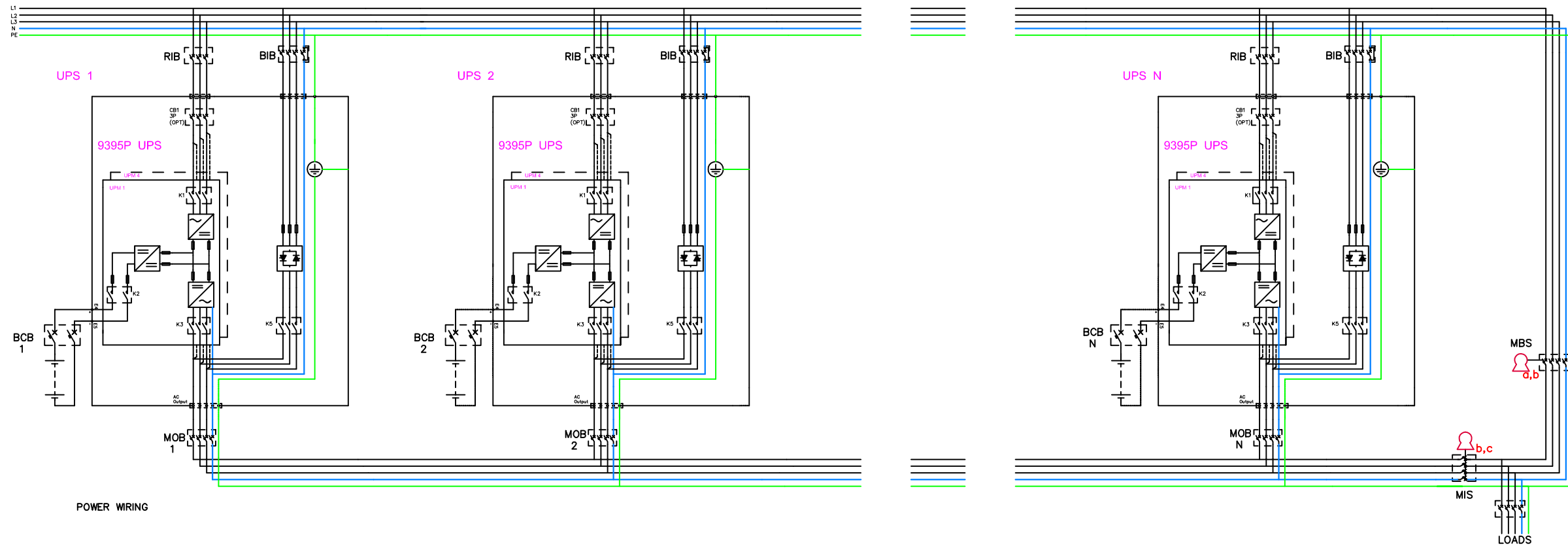
TB3
1 BLDG ALARM 1
2 BLDG ALARM 1 RTN
3 BLDG ALARM 2
4 BLDG ALARM 2 RTN
5 BLDG ALARM 3
6 BLDG ALARM 3 RTN
7 BLDG ALARM 4
8 BLDG ALARM 4 RTN
9 BLDG ALARM 5
10 BLDG ALARM 5 RTN

TB6
1 BYP ϕ L1
2 BYP ϕ L2
3 BYP ϕ L3
4 BYP N
5 OUT ϕ L1
6 OUT ϕ L2
7 OUT ϕ L3
8 SYNC ϕ L1
9 SYNC ϕ L2
10 SYNC ϕ L3

METRIC		EATON CORPORATION		
DIMENSIONS ARE IN MILLIMETERS AFTER PLATING, DIMENSIONS AND TOLERANCES IN ACCORDANCE WITH ASME Y14.5M-1994. SEE NOTES FOR TOLERANCES.				
DESCRIPTION: 9395P 600-300KVA Customer Connections Isometric				
ORIGINATED: ATIF RASHEED	27.04.2015	ECO:	NAME:	REVISION: 001
MODIFIED:		DOCUMENT TYPE:	P-110000418	SCALE: 1:16
CHECKED:		SAFETY:	RELEASED	SHEET: 3 OF 6
APPROVED:		EATON CORPORATION - CONFIDENTIAL AND PROPRIETARY		
NOTICE TO PERSONS RECEIVING THIS DOCUMENT AND/OR TECHNICAL INFORMATION				
THIS DOCUMENT, INCLUDING THE DRAWING AND INFORMATION CONTAINED THEREIN, IS CONFIDENTIAL AND IS THE EXCLUSIVE PROPERTY OF EATON CORPORATION, AND IS LOANED TO YOU BY EATON AT ANY TIME. IT IS NOT TO BE REPRODUCED OR TRANSMITTED IN ANY FORM OR BY ANY MEANS, ELECTRONIC OR MECHANICAL, INCLUDING PHOTOCOPYING, RECORDING, OR BY ANY INFORMATION STORAGE AND RETRIEVAL SYSTEM, WITHOUT THE PRIOR WRITTEN CONSENT OF EATON. IN THE CASE OF CONFLICTING CONTRACTUAL PROVISIONS, THIS NOTICE SHALL GOVERN THE STATUS OF THIS DOCUMENT.				
© 2011 Eaton Corporation - All Rights Reserved.				



METRIC		EATON CORPORATION		EATON	
DIMENSIONS ARE IN MILLIMETERS AFTER PLATING, DIMENSIONS AND TOLERANCES IN ACCORDANCE WITH ASME Y14.5M-1994. SEE NOTES FOR TOLERANCES.					
DESCRIPTION: 9395P 600-300KVA Electrical Wiring					
ORIGINATED: ATIF RASHEED	27.04.2015	ECO:	NAME:	REVISION: 001	SIZE: A2
MODIFIED:				STATE: RELEASED	SCALE: 1:20
CHECKED:		DOCUMENT TYPE:	P-110000418		SHEET: 4 OF 6
SAFETY:					
APPROVED:					
EATON CORPORATION - CONFIDENTIAL AND PROPRIETARY NOTICE TO PERSONS RECEIVING THIS DOCUMENT AND/OR TECHNICAL INFORMATION THIS DOCUMENT, INCLUDING THE DRAWING AND INFORMATION CONTAINED THEREIN, IS CONFIDENTIAL AND IS THE EXCLUSIVE PROPERTY OF EATON CORPORATION, AND IS MERELY ON LOAN AND SUBJECT TO RECALL BY EATON AT ANY TIME. BY SIGNING PROVISIONS OF THIS DOCUMENT, THE RECEIVING ACKNOWLEDGES AND AGREES THAT THIS DOCUMENT CANNOT BE USED IN ANY MANNER HARMFUL TO THE INTERESTS OF EATON AND THAT NO PORTION OF THIS DOCUMENT MAY BE COPIED OR OTHERWISE REPRODUCED WITHOUT THE PRIOR WRITTEN CONSENT OF EATON. IN THE CASE OF CONFLICTING CONTRACTUAL PROVISIONS, THIS NOTICE SHALL GOVERN THE STATUS OF THIS DOCUMENT. © 2011 Eaton Corporation - All Rights Reserved.					



- MBS STATUS (Provided by others, Installed by others)
0.75 - 2.5mm² twisted pair (if possible, else shielded)
No earth needed
- MOB STATUS (Provided by others, Installed by others)
0.75 - 2.5mm² twisted pair (if possible, else shielded)
No earth needed
- PCAN (DUAL AS OPTION)
Provided by Eaton, Installed by Eaton
- PULL CHAIN (REDUNDANT ON BYP STATUS)
Provided by Eaton, Installed by Eaton
- ON BYPASS STATUS (NO INVERTORS ONLINE)
Provided by others, Installed by others
1.5 - 2.5mm² , 60v

- Mechanical bypass interlocking sequence
- Place UPS system to bypass. On bypass status (K3) will energize Key A solenoid to release it
 - Removing key A will switch on "force bypass" to the UPS system
 - Place key A to MBS breaker and close breaker. Key B will be released.
 - Aux contact of MBS will keep "force bypass" on UPS system
 - Place key B to MIS breaker and open MIS to isolate UPS system from load. Key C will be released
 - Place key C to it's dedicated keyhole to release "force bypass" command to allow UPS system testing

METRIC	EATON CORPORATION	EATON
DIMENSIONS ARE IN MILLIMETERS AFTER PLATING, DIMENSIONS AND TOLERANCES IN ACCORDANCE WITH ASME Y14.5M-1994. SEE NOTES FOR TOLERANCES.		
DESCRIPTION: 9395P 600-300KVA Wiring Parallel Units		
ORIGINATED: ATIF RASHEED	27.04.2015	ECO:
MODIFIED:		NAME:
CHECKED:		DOCUMENT TYPE: P-110000418
SAFETY:		AUTOCAD DRAWING
APPROVED:		
EATON CORPORATION - CONFIDENTIAL AND PROPRIETARY NOTICE TO PERSONS RECEIVING THIS DOCUMENT AND/OR TECHNICAL INFORMATION THIS DOCUMENT, INCLUDING THE DRAWING AND INFORMATION CONTAINED THEREIN, IS CONFIDENTIAL AND IS THE EXCLUSIVE PROPERTY OF EATON CORPORATION, AND IS LOANED TO YOU AND SUBJECT TO RECALL BY EATON AT ANY TIME. BY YOUR POSSESSION OF THIS DOCUMENT, YOU HEREBY ACKNOWLEDGE AND AGREE THAT THIS DOCUMENT SHALL BE USED IN ANY MANNER SERVING THE INTERESTS OF EATON AND THAT NO PORTION OF THIS DOCUMENT MAY BE COPIED OR OTHERWISE REPRODUCED WITHOUT THE PRIOR WRITTEN CONSENT OF EATON. IN THE CASE OF CONFLICTING CONTRACTUAL PROVISIONS, THIS NOTICE SHALL GOVERN THE STATUS OF THIS DOCUMENT. © 2011 Eaton Corporation - All Rights Reserved.		

9395 P 600-300 KVA UPS Site Planning Data

Product Specifications																		
UPS Rating		AC Input		3P Rectifier Input Breaker (RIB)		3P+Bolted N Bypass Input Breaker (BIB)			4P Inverter AC output Breaker MOB			Battery Breaker (BCB) (Ratings at the end of discharge, 1.67VPC)				For Parallel Units Common Maintenance Bypass Switch (MBS)		
				Nominal Current	Maximum Current	Nominal Current at 400v Input	Maximum Current at 10% under voltage	Integrated Bypass Fuse	AC Output	Output Current	Inverter Short Circuit Current	Auxiliary Switches	Rating	Separate Battery Configuration (UPM Bttery)	Common Battery Configuration (UPS Battery)	Trip Device (Shunt Trip)	Auxiliary Switches	Rating
KVA	KW	v	A	A	A	A	Type	v	A	A	Qty	VDC	A	A	VDC	Qty	A	Qty
300	275	400	420	500	870	957	6,9 URD33 TTF 1400A	400	435	760	2	600	733	733	48	1	435 x N	1
600	550	400	840	1000	870	957	6,9 URD33 TTF 1400A	400	870	1305	2	600	733	1465	48	1	870 x N	1

Notes:

1. Rectifier AC input current calculations: Nominal – 100% load without charging; Maximum – 100% load with maximum charging (Rectifier current limit).
2. Inverter AC output current calculation: At 100% rated output load.
3. The system must be installed on a level floor suitable for computer or electronic equipment.
4. All wiring and installations must be in accordance with applicable National and Local Electric Regulations.
5. AC input to UPS: (3) phases, (1) neutral, (1) ground.
AC output to load: (3) phases, (1) neutral, (1) ground.
DC input from battery to UPS: (1) positive, (1) negative, (1) ground.
6. All breakers should be adjusted according to the specified Ampere values to protect the UPS and installation.
7. For UPS installations that utilizes single feed input, The input breaker should be configured according to the rated rectifier input current..
8. Specifications are subject to change.

METRIC	THIRD ANGLE PROJECTION	EATON CORPORATION	
DIMENSIONS ARE IN MILLIMETERS AFTER PLATING, DIMENSIONS AND TOLERANCES IN ACCORDANCE WITH ASME Y14.5M-1994. SEE NOTES FOR TOLERANCES.			
DESCRIPTION: 9395P 600-300KVA Specifications			
ORIGINATED: ATIF RASHEED	27.04.2015	ECO:	NAME:
MODIFIED:		DOCUMENT TYPE:	P-110000418
CHECKED:		SAFETY:	RELEASED
APPROVED:		REVISION:	001
		STATE:	SCALE: 1:1
		SHEET:	6 OF 6
EATON CORPORATION - CONFIDENTIAL AND PROPRIETARY NOTICE TO PERSONS RECEIVING THIS DOCUMENT AND/OR TECHNICAL INFORMATION THIS DOCUMENT, INCLUDING THE DRAWING AND INFORMATION CONTAINED THEREIN, IS CONFIDENTIAL AND IS THE EXCLUSIVE PROPERTY OF EATON CORPORATION, AND IS LOANED AND SUBJECT TO RECALL BY EATON AT ANY TIME. BY THEIR POSSESSION OF THIS DOCUMENT, THE RECIPIENT ACKNOWLEDGES AND AGREES THAT THIS DOCUMENT CANNOT BE USED IN ANY MANNER UNLESS TO THE INTERESTS OF EATON AND THAT NO PORTION OF THIS DOCUMENT MAY BE COPIED OR OTHERWISE REPRODUCED WITHOUT THE PRIOR WRITTEN CONSENT OF EATON. IN THE CASE OF CONFLICTING CONTRACTUAL PROVISIONS, THIS NOTICE SHALL GOVERN THE STATUS OF THIS DOCUMENT. © 2011 Eaton Corporation - All Rights Reserved.			