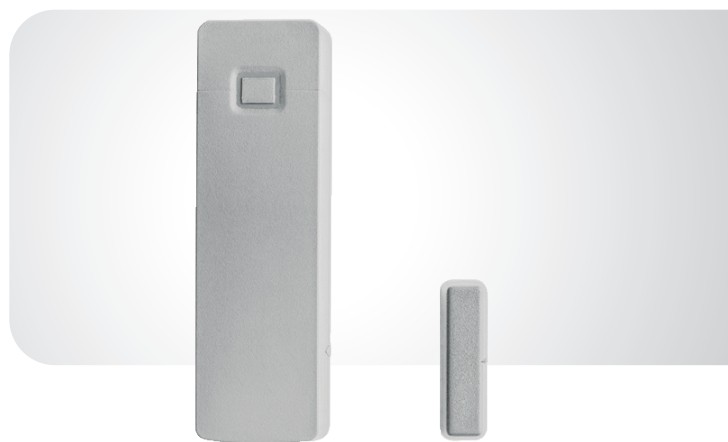


RF-DC101-K4

Wireless surface mount, white, 433 Mhz, 80+



OVERVIEW

In this series we are using Carrier's 80+ wireless protocol in a 433 Mhz frequency set-up, which allows for a better wireless indoor range. This wireless door window sensor, which has 2 reed switches, protects anything that opens and closes such as doors, windows and cabinets.

You can monitor any supervised contact in such a way that hardwired devices become wireless in a fraction of time. The sensor is equipped with a wall and cover tamper for additional security.

FEATURES

- 80+ wireless protocol using 433 Mhz for improved indoor range
- 5-years battery life
- Battery pull-tab
- Selectable reed switches
- Additional terminal block
- Range of accessories : two types of spacers and a stronger magnet

RF-DC101-K4

Wireless surface mount, white, 433 Mhz, 80+

National Sales Enquiries
Level 4.01, 2 Ferntree Place
Notting Hill, Victoria 3168
Phone: 1300 361 479
Outside Australia: +61 401 777 572
www.aritech.com.au

TECHNICAL SPECIFICATIONS

General	
Application type	Surface mount
Contact type	Reed switch
Wired / Wireless	
Wired-wireless	Wireless
Wireless frequency	433 MHz LoNa
Open-air range	400 m
Operating gap	7 to 13 mm
Electrical	
Power consumption	Max 70 mA at 3 V
Voltage	3.0 V
Contact power	Maximum power output : 10 mW
Batteries	1300 mAh (DL123A)
Battery lifetime	>5 years with supervis. signal per 15 min. and 4 activations/hour
Physical	
Dimensions contact /sensor	101 x 31 x 28 mm
Net weight	59 g
Colour	White
Environmental	
Operating temperature	-10 to +55°C
Storage temperature	-34 to +60°C
Relative humidity	0 to 90% noncondensing
Accessories	
RF-DC101BM	Single large magnet, white
RF-DC101SM	10-pack space magnet housing, white
RF-DC101SR	10-pack space sensor housing, white
Regulatory	
Compliance	CE, RCM