
OWNER'S MANUAL

M25 Series Pallet Truck



M25 Series Pallet Truck

Model	M25	M25L	M25W	M25S
Operation	Pedestrian			
Capacity	2500kg (dual-mode 'quiklift' hydraulic pump)			
Load center	600mm			
Service Weight	~65kg	~65kg	~75kg	~70kg
Fork Dimensions	540x1150mm	540x1150mm	685x1220mm	540x1150mm
Lowered Fork Height	85mm	65mm	85mm	85mm
Lifting Height	165mm			
Turning Angle	210°			
Turning Radius	~1286mm			
Materials	Mild steel with powdercoat finish			304 stainless steel



Warning

1. Read and understand the entire owners manual before using the pallet truck.
2. Do not place hands or feet under the pallet truck at any time.
3. Never allow anyone to ride on the pallet truck.
4. Operate on smooth, level, finished floors only; do not use on ramps or sloping floors.
5. To prevent accidental tipping, make sure load is centered on the fork.
6. Do not lift a load with fork tips only. This may cause damage to the fork and personal injury if the rear of the pallet truck suddenly tips upward.
7. Do not load pallet truck beyond its rated capacity.
8. Never leave a loaded pallet truck unattended in the raised position. Always lower load to the floor.
9. Pull pump release lever slowly to allow load to descend in a controlled manner.
10. Secure load before transporting.
11. Do not move a loaded pallet truck by other than manual force.
12. The handle is designed to pull and steer the pallet truck only. Do not use the handle as a leverage tool.
13. Failure to comply with these warnings may result in personal injury and/or property damage.

Unpacking

Open shipping container and check for shipping damage. Report any damage immediately to your distributor and shipping agent. Do not discard any shipping material until the Pallet Truck is assembled and working properly.

Individual trucks are assembled and ready to use. Pallet trucks purchased in crate quantities (6 units to a crate) require some assembly. Match the letter label on the handle assembly to the letter label on the frame prior to assembly.

Assembly

Tools required for assembly:

Hammer
Flat Head Screwdriver
Pliers

1. Insert the base of the handle into the pump bracket (Figure 1). Align the holes at the base of the handle with the holes in the pump bracket.
2. Use a hammer to tap the handle pin into the holes of the pump bracket and handle (Figure 2). Use pliers to turn the handle pin until its holes align with the spring pin holes.
3. Feed the screw head through the center hole in the handle pin (Figure 3). Using a screwdriver, pry up the cam and slip the screw head under the notch in the cam.
4. Use a hammer to tap the spring pins (Figure 2) into the holes on the pump bracket and handle pin.
5. Tap out the pump retainer pin (Figure 1).

NOTE: It is a good idea to remove any air bubbles that might have accumulated in the hydraulic system during shipping. Refer to Cleaning the Release Valve, on page 3.

Operation

This pallet truck is designed for use with open style pallets or skids only. Closed style pallets must be placed on top of fork prior to use.

1. Insert the forks into the pallet.

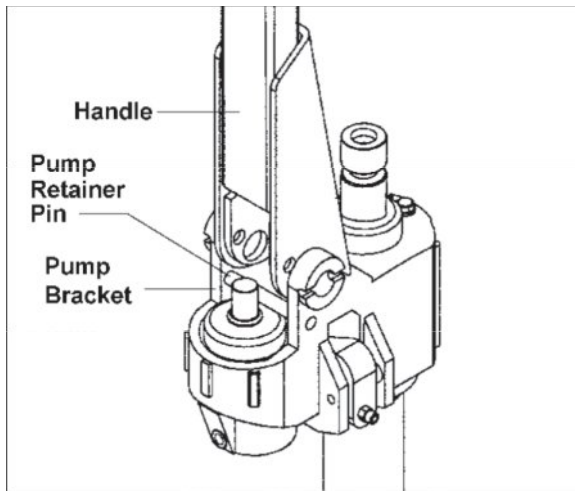


Figure 1

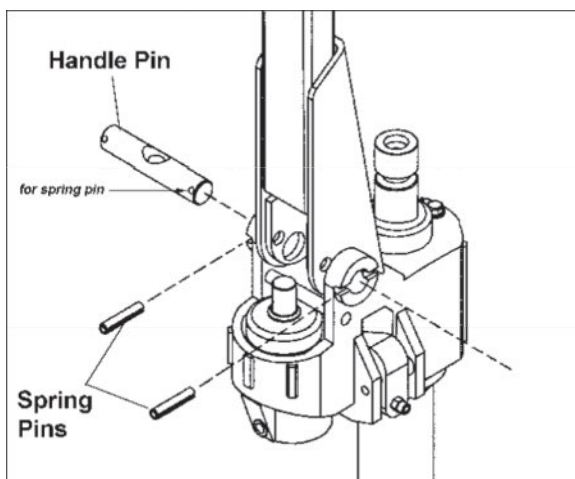


Figure 2

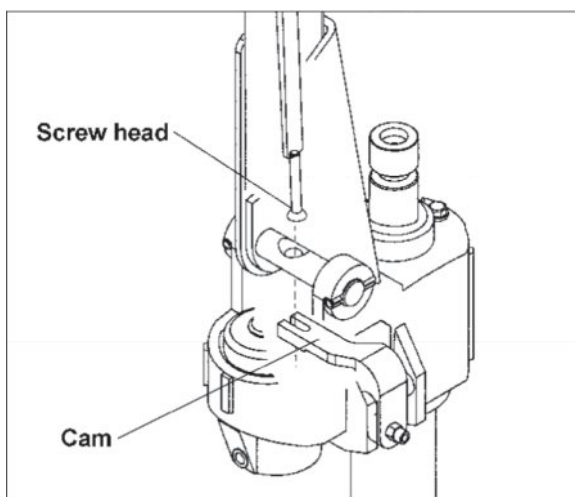


Figure 3

2. To raise the fork, push control lever all the way down, and pump the handle until the desired fork height is reached.
3. To move the handle without affecting the fork setting, set the control lever in the center neutral position. The load can now be pushed or pulled using the handle.
4. To lower the fork, pull lever all the way up. **Allow the load to descend slowly in a controlled manner.** The lever is spring loaded and will return to the neutral position when released.

CAUTION When not in use, do not allow heavy loads to remain on the fork for an extended period of time. Always lower fork completely when not in use.

Up-Down Cam Adjustment

When pumping the handle with the lever in neutral position, there should be no movement of the fork. If there is fork movement, the cam must be adjusted:

1. Place lever in neutral position.
2. Loosen the hex nut .
3. Adjust the socket head cap screw while pumping the handle, until there is no longer any movement of the ram.
4. Tighten the hex nut .

Cleaning the Release Valve (Bleeding the Pump)

Over time, the hydraulic pump may become clogged with debris or air bubbles causing improper function.

Clean the release valve as follows:

1. Pump handle quickly, raising pallet truck to full extent. Pull lever all the way up in order to lower the fork, *while continuing to pump the handle.*
2. When fork has lowered completely, the valve has been flushed. Repeat if necessary.

Maintenance

Check the oil level annually by removing the oil plug on top of the pump housing. When changing or adding oil, fill the tank through the oil plug hole to 80% capacity with hydraulic jack oil, about 2-1/2 deep in pump housing. See Figure 4. Do **not** use any other type of oil. When finished, replace oil plug .

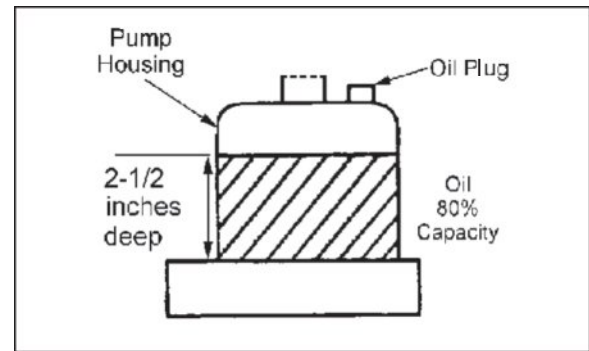


Figure 4

Wheel bearings are sealed and require no lubrication. The crank shaft features oil lite bushings that also require no lubrication.

Lightly oil all other moving parts.

Seal and O-Ring Replacement for Ram and Plunger Piston

1. Raise the pallet truck by pumping handle.
2. Remove spring pin . This will free the pump and handle assembly from the pallet truck.
3. Remove the oil plug , turn pump over and empty the oil into a suitable container. Pump handle until all oil has drained. Dispose of used hydraulic oil according to local disposal regulations.
4. Pull out plunger piston and/or ram piston .
5. Remove all o-rings and seals. See Figure 5.
6. Insert new o-ring or seal one at a time making sure to replace with the same size that was removed.

Reassemble and fill the oil tank through the oil plug hole to 80% capacity with new hydraulic jack oil, about 2-1/2 deep in pump housing. See Figure 4.

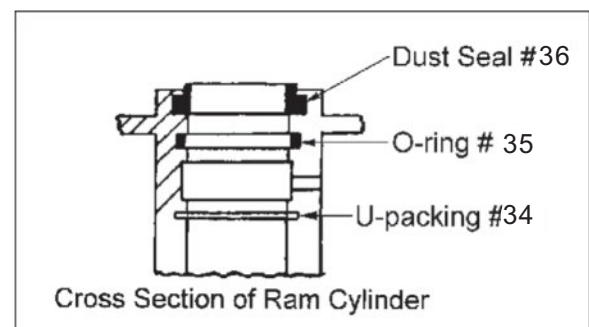
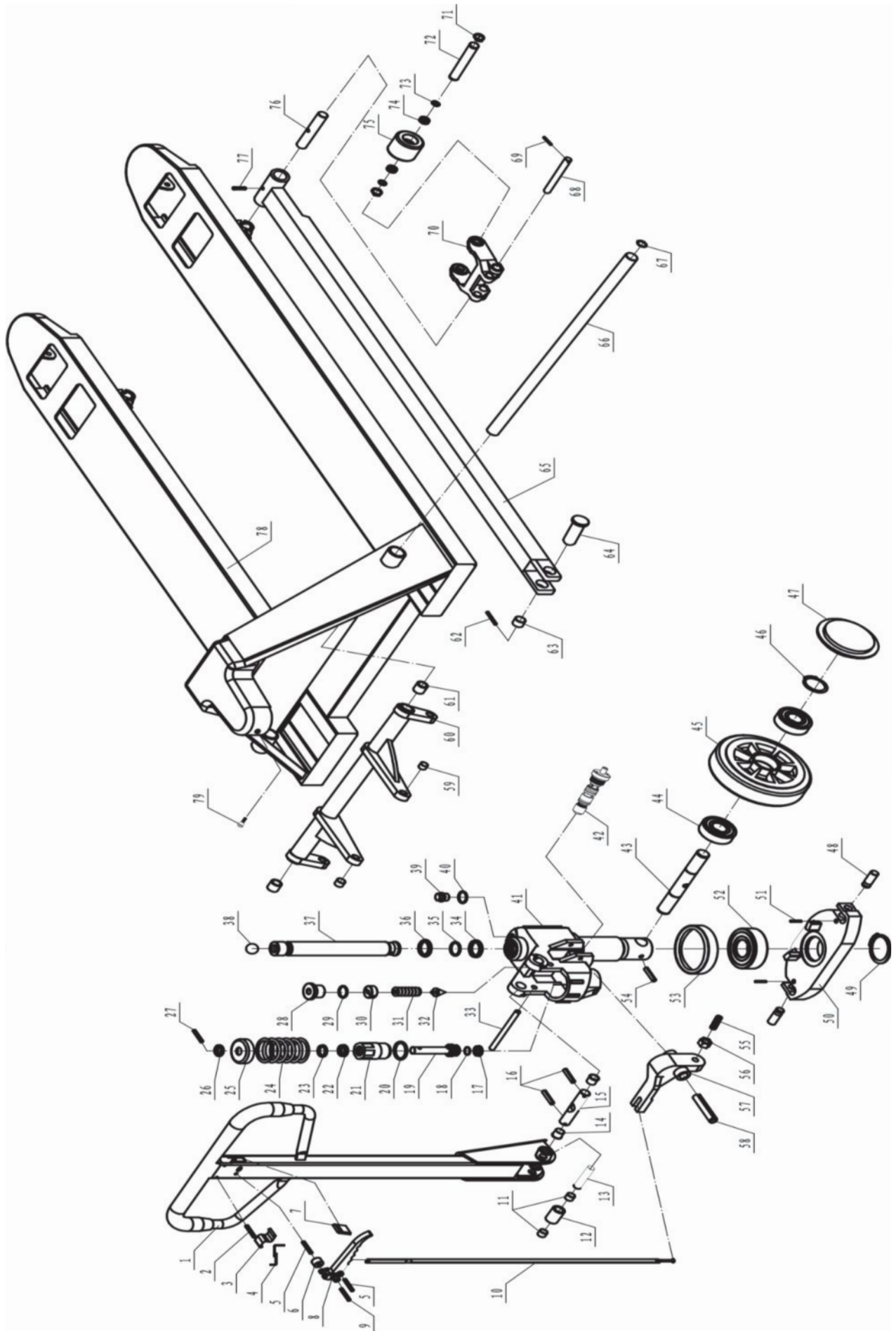


Figure 5

Troubleshooting

Trouble	Probable Cause	Remedy
Hydraulic unit does not lift.	Oil level is low.	Make sure there is no oil leakage from Release Screw , Pressure Adjustment Screw or valve area. Then add oil.
	Air in pump.	See Cleaning the Release Valve.
	Worn o-ring in ram cylinder.	Replace o-ring (refer to Seal and O-Ring Replacement).
Once lifted, truck lowers by itself.	Steel ball has not seated in hydraulic unit.	See Cleaning the Release Valve.
	Worn o-ring in ram cylinder.	Replace o-ring (refer to Seal and O-Ring Replacement).
	Release valve not seated properly.	See Cleaning the Release Valve.
	Pallet truck loaded beyond capacity.	Reduce load to within capacity.
	Release valve not adjusted properly.	Adjust valve by Pressure Adjustment Screw and Release Screw .
	Oil leakage from Release Screw or Pressure Adjustment Screw .	Tighten Release Screw . Replace o-rings on Release Screw and/or Pressure Adjustment Screw. If leakage continues, contact authorized service center.
Fork does not lower.	Cam requires adjustment.	Refer to Up-Down Cam Adjustment.
	Cam is damaged.	Replace cam .
	Damaged push rods and/or linkages.	Replace damaged parts. (It is recommended that an authorized service center perform this work.)
Lever does not set at NEUTRAL position.	Cam requires adjustment.	Refer to Up-Down Cam Adjustment.

Parts Diagram: M25 Series Pallet Truck




Parts List: M25 Series Pallet Truck

NO.	DESCRIPTION	QUANTITY
1	HANDLE TUBE	1
2	ELASTIC PIN	1
3	BLADE SPRING	1
4	SPRING	1
5	ELASTIC PIN	2
6	ROLLER	1
7	LEVER MAT	1
8	HANDLE	1
9	ELASTIC PIN	1
10	PULL ROD	1
11	OIL LITE BUSHING	2
12	PRESSURE ROLLER	1
13	SHAFT	1
14	OIL LITE BUSHING	2
15	SHAFT	1
16	ELASTIC PIN	2
17	U-PACKING	1
18	OIL BAFFE WASHER	1
19	PLUNGER PISTON	1
20	O-RING	1
21	PLUNGER HOUSING	1
22	U-PACKING	1
23	DUST SEAL RING	1
24	SPRING	1
25	SPRING CAP	1
26	CALATHIFORM PAD	1
27	ROUND PIN	1
28	RELEASE PLUG	1
29	O-RING	1
30	RELEASE SCREW	1
31	SPRING	1
32	NEEDLE VALVE	1
33	PIN	1
34	U-PACKING	1
35	O-RING	1
36	DUST SEAL RING	1
37	RAM PISTON	1
38	STEEL BALL	1
39	OIL PLUG	1
40	O-RING	1
41	PUMP HOUSING ASSY	1
42	VALVE ASSEMBLY	1
43	STEERING WHEEL AXLE SHAFT	1
44	BALL BEARING	4
45	STEERING WHEEL	2
46	SNAP RING	2
47	DUST SEAL CAP	2
48	TABLE PIN	2

Parts List continued: M25 Series Pallet Truck

49	SNAP RING	1
50	TABLE	1
51	SPRING PIN	2
52	BALL BEARING	1
53	BEARING BASE	1
54	SPRING PIN	1
55	SOCKET HEAD CAP SCREW	1
56	HEX NUT	1
57	CAM	1
58	SPRING PIN	1
59	OIL LITE BUSHING	2
60	LIFTING YOKE	1
61	OIL LITE BUSHING	2
62	SPRING PIN	2
63	OIL LITE BUSHING	2
64	CRANK PIN	2
65	PUSH ROD	2
66	CRANK SHAFT	1
67	SNAP RING	2
68	ARM PIN	2
69	SPRING PIN	2
70	LOAD WHEEL FRAME	2
71	SNAP RING	4
72	LOAD WHEEL AXLE	2
73	FLAT WASHER	4
74	BALL BEARING	4
75	LOAD WHEEL	2
76	ROD PIN	2
77	SPRING PIN	2
78	FORK FRAME	1

 Simpro has been manufacturing and retailing smart lifting solutions for over thirty years.


From humble beginnings as a small engineering firm in Auckland, New Zealand, the company has grown to become a leading supplier of handling equipment for niche applications – such as bin-lifting, tipping and handling machines, crate stackers and goods lifts.


Simpro products play an unobtrusive but essential role for thousands of companies around the world, in industries as diverse as waste management, food processing,

resource extraction and pharmaceutical manufacturing. They are available through a network of agents which spans the globe, and are backed by a sophisticated in-house design and fabrication capability.

Simpro is a family-owned company, registered with the New Zealand Companies Office as Simpro Handling Equipment Ltd, company no. 1827916.

The products in this document may contain intellectual property, including design elements registered to or licensed by Simpro Handling Equipment Ltd.

 66 Rangi Road
Takanini 2105
Auckland, New Zealand

 PO Box 202236
Southgate, Takanini 2246
Auckland, New Zealand

 +64 9 634 7445

 sales@simpro.world

 shop.simpro.world

 @simpro.world

 @SimproWorld_Lifters

