



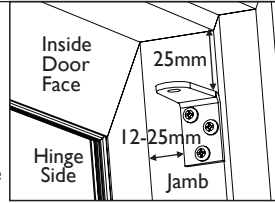
LOCKTON
ESSENTIALS

SGDC-610 - SCREEN DOOR DOOR CLOSER

1-6610 FITTING INSTRUCTIONS

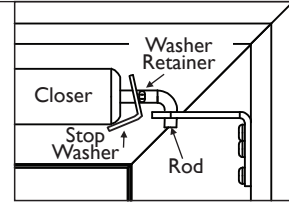
Jamb Bracket

Fasten the Jamb Bracket 12-25mm from the inside of the door face on the hinge side and 25mm down from the top of the door jamb, with the 25mm self tapping screws, as shown.



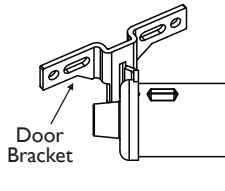
Closer Setting

Pull out the Rod and place the Stop Washer over the Washer Retainer as shown. Rest the Closer up against the Washer. Fit the Rod into the Jamb Bracket.



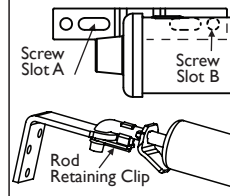
Door Bracket

Insert the Door Bracket onto the Closer's foot. Close & latch the door. Swing the Door Closer onto the door and level.



Door Bracket

In the centre of Screw Slot A, fix the Bracket with a 19mm screw. Remove the Closer & fasten the other 19mm screw into Slot B. Refit the Closer into the Door Bracket then onto the Jamb Bracket. Attach the Plastic Rod Retaining Clip.



Closing Speed

Open the door and roll back the Stop Washer over the Washer Retainer. Test the door closing speed. Use a philips Screwdriver on the Valve Screw to adjust the door closing speed.

