

# Art ID. CL6-4650 FITTING INSTRUCTIONS

*'Cylindrical 6000 Series' CONVERSION KIT  
for doors 46mm to 50mm*



Inserts

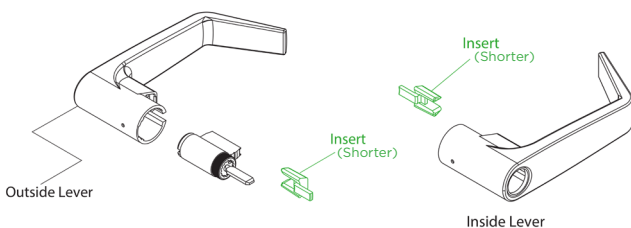


Spacer Disc

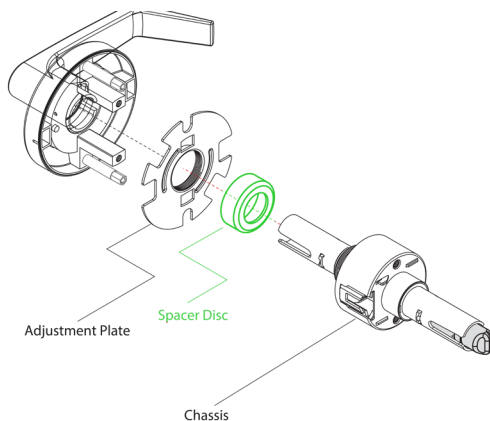
## Conversion Kit & Instructions For Doors: 46 - 50 mm

## FITTING INSTRUCTIONS

1. Replace the 2 x **Standard (Longer) Lever Handle Inserts** on both Handles with the 2 x **Lever Handle Inserts** supplied in this kit (**Shorter**)



2. Insert the **Spacer Disc** below the threaded front plate (see images)



3. Install the front adjustment plate after flipping to the opposite side (see images)  
-The plate lip should point inwards when used with 46mm - 50mm doors.

