



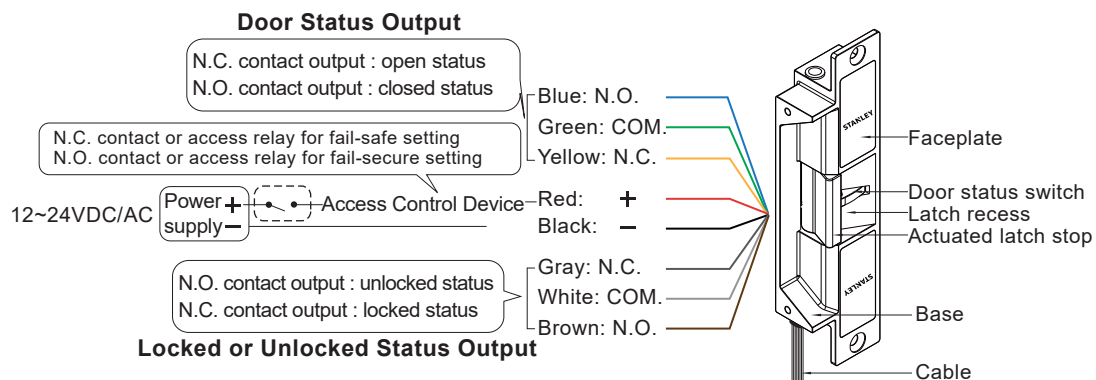
# LOCKTON

## Electric Strike Installation Instructions SGESGK700 Series

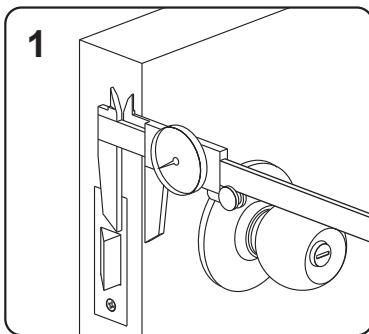
**Specifications** (SGESGK700 Series is polarity free)

The SGESGK700 series is an electric strike for metal and wooden door frames. It is designed for use with cylindrical locks and can be used with the optional mechanical locks or electromechanical locks. The electric strike can easily be configured to either fail-safe or fail-secure modes. The optional electromechanical locks feature a latch bolt and a nib, which makes the latch a dead bolt when the door is closed.

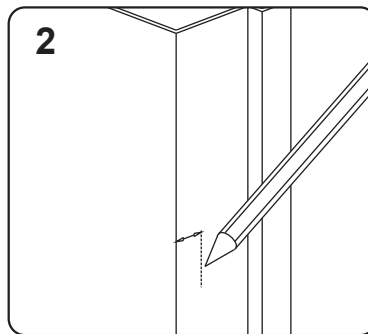
Operating Voltage	12~28VDC/AC
Voltage Tolerance	±15%
Current Draw	230mA/12VDC ; 140mA/28VDC 440mA/12VAC ; 230mA/28VAC
Operating Temperature	-10°C~+45°C
Humidity	0~95%
Jaw Strength	1500 lbs Static Strength



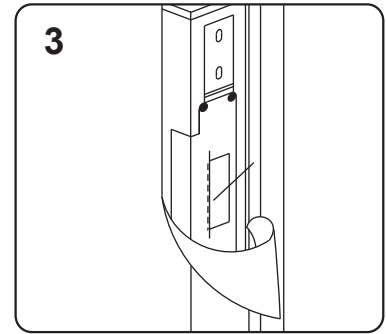
## Installation Instructions (Figures below show SGESGK700 installation)



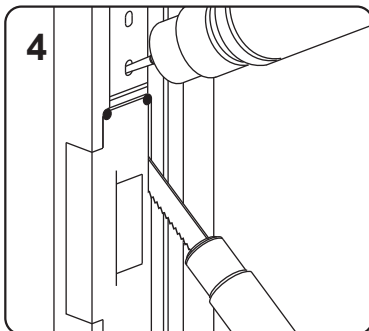
1 Measure the vertical and horizontal position of the latch bolt on the door leaf.



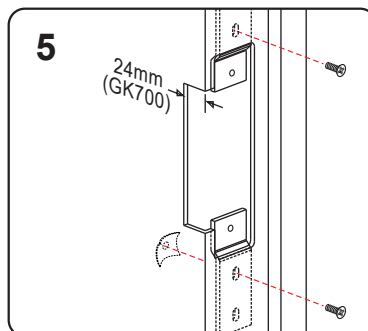
2 Mark the position of the latch bolt on the door frame as shown in figure.



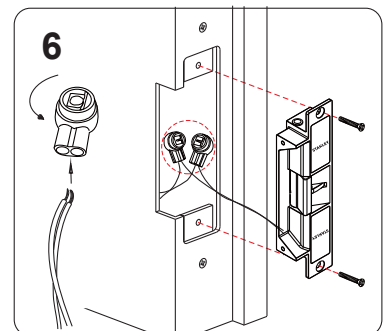
3 Align the installation template supplied to the marked line.



4 Drill the holes and cut the door off as indicated by the template.



5 Fit the fixing plugs tightly.



6 Connect the power and test the electric strike before finally mounting the unit.



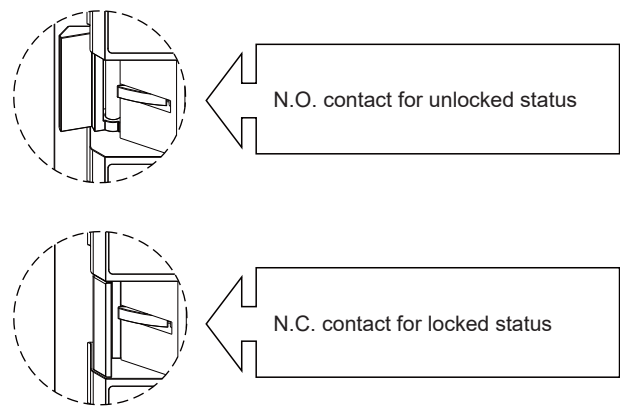
### Note

It must be ensured that there is a small space between the latch bolt and actuated latch stop when the door is closed and the latch bolt is in its locked position. This will relieve pressure on the solenoid valve and reduce the risk of failure when opening the door.

# Output Signals

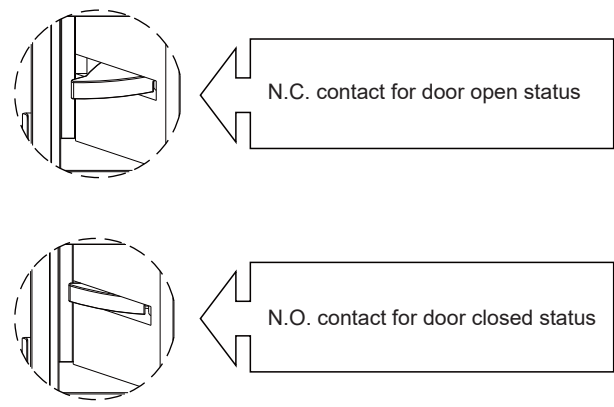
## Locked or Unlocked Status Output

The locked or unlocked status output can be used to monitor whether the door is locked. Reed switch rating: 1A 125VAC



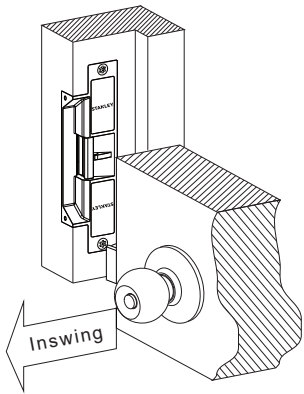
## Door Status Output

The door status output can be used to indicate whether the door is open or closed. Reed switch rating: 1A 125VAC



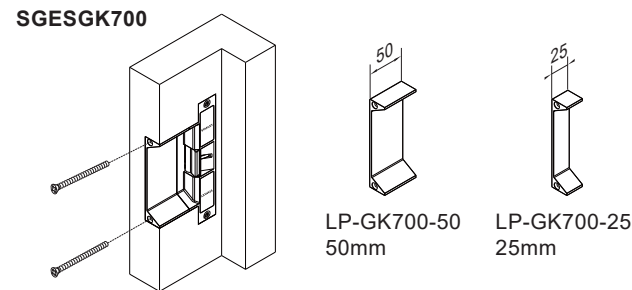
# Mortise Mount on Wooden Door Frames

## SGESGK700 on Wooden Door Frames



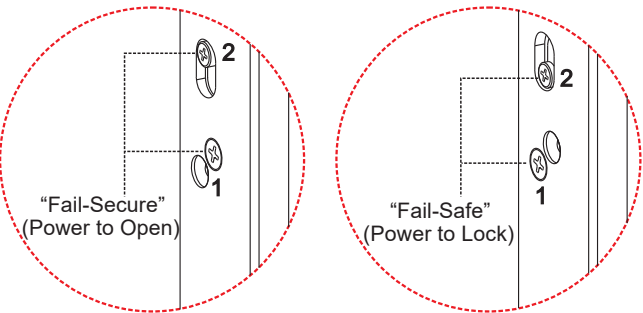
# Optional Brackets

Lip extension brackets are recommended for door frames with wide jambs.



# How to Change Version

To change between fail-safe and fail-secure modes, change the position of screw 1 (as marked on the diagram) after sliding screw 2 into place as desired.



# Butt Splice (IDC) Connector

