

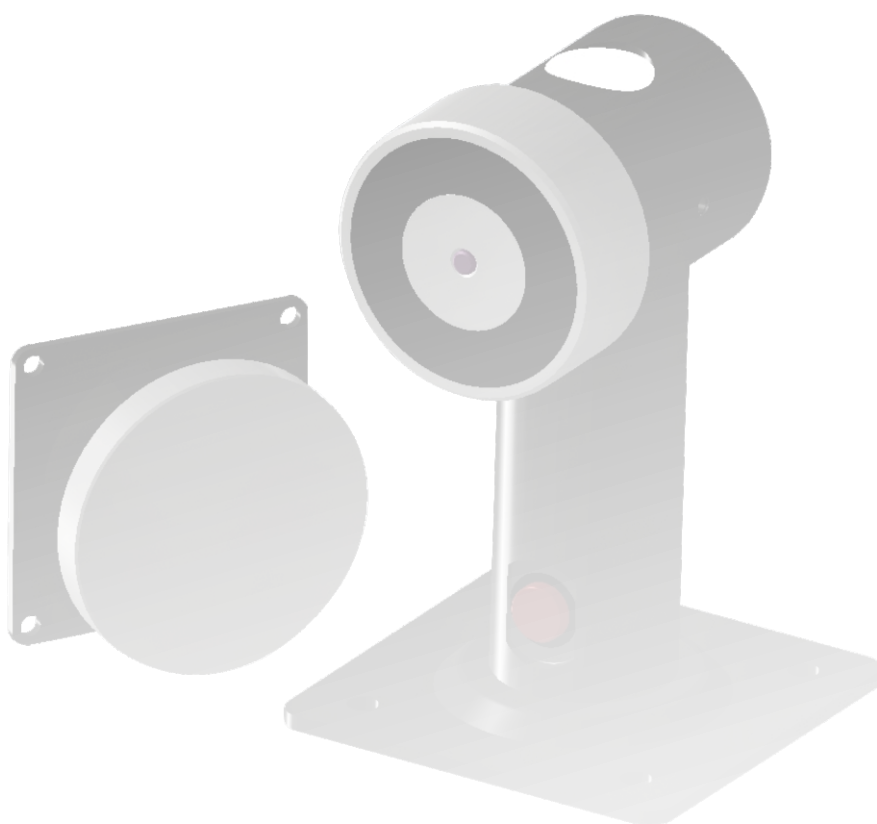
ONETOP

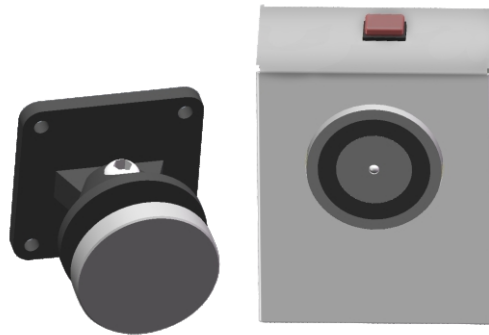
ELECTROMAGNETIC DOOR
HOLDER SERIES



CONTENTS

1	Fire Rated Electromagnetic Door Holder R40 SERIES	01/02
2	Fire Rated Electromagnetic Door Holder R60 SERIES	03/04

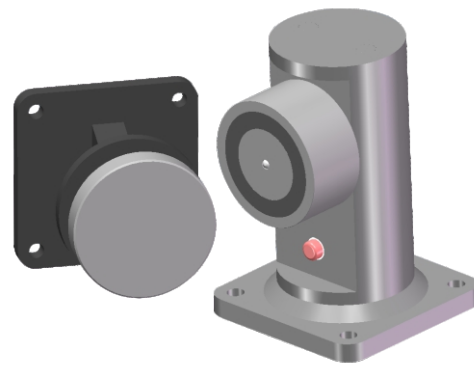




R40S



R40-PCH-LSS



R40-PCV-LSS



35Kg Holding Force



Power to Lock



Door Release bottom

FEATURE

Fire and smoke door magnetic door holder, no residual magnetism with excellent quality surface finished, Supplied in 12 or 24VDC power. The devices have to be linked to fire / smoke alarm system. When a fire alarm occurs, power is removed from the devices and the doors are returned to the closed condition, preventing the spread of fire and/or smoke to other areas.

SPECS



Fail Safe

Dimension

Weight

Operating Voltage

Operating Current

Holding Force

Operating Conditions

Output Signals

Surface Finishes

Power to Lock

Lock Body

R40S

L 70 x W 41 x H 85mm

R40-PCH-LSS

L 60 x W 108 x H 60mm

R40-PCV-LSS

L 60 x W 60 x H 88mm

Armature Plate

L 56.2 x W 55.2 x H 55.2mm

0.5Kg

12/24VDC ±10%

12VDC – 160mA

24VDC – 80mA

35Kg

Temperature

-10°C ~ 60°C

Humidity

0 ~ 85% (non-condensing)

Lock Status Output

(LSS) Option

COM/NC/NO:

Max 30VDC; Max 0.2A

High Quality Plating for Anti-corrosion

MODELS

	Lock Status Sensor Monitoring	Wall Mount	Extension Wall Mount	Floor Mount
R40S		•		
R40-PCH-LSS	•		•	
R40-PCV-LSS	•			•



R60-PCH-LSS



R60-PCV-LSS



60Kg Holding Force



Power to Lock



Door Release bottom

FEATURE

Fire and smoke door magnetic door holder, no residual magnetism with excellent quality surface finished, Supplied in 12 or 24VDC power. The devices have to be linked to fire / smoke alarm system. When a fire alarm occurs, power is removed from the devices and the doors are returned to the closed condition, preventing the spread of fire and/or smoke to other areas.

SPECS



Fail Safe	Power to Lock	
Dimension	Lock Body	
	R60-PCH-LSS	L 148 x W 90 x H 90mm
	R60-PCV-LSS	L 90 x W 90 x H 107.3mm
	Armature Plate	L 30.4 x W 65 x H 65mm
Weight	1.2Kg	
Operating Voltage	12/24VDC ±10%	
Operating Current	12VDC – 200mA	24VDC – 90mA
Holding Force	60Kg	
Operating Conditions	Temperature	-10°C ~ 60°C
	Humidity	0 ~ 85% (non-condensing)
Output Signals	Lock Status Output (LSS) Option COM/NC/NO: Max 30VDC; Max 0.2A	
Surface Finishes	High Quality Plating for Anti-corrosion	

MODELS

	Lock Status Sensor Monitoring	Extension Wall Mount	Floor Mount
R60-PCH-LSS	•	•	
R60-PCV-LSS	•		•

