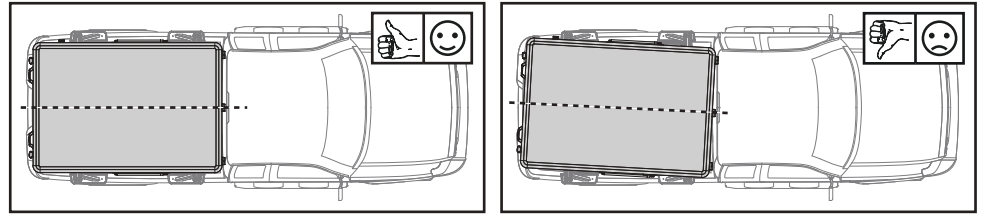


## 9 CHECK THAT THE TENT HAS BEEN INSTALLED STRAIGHT.

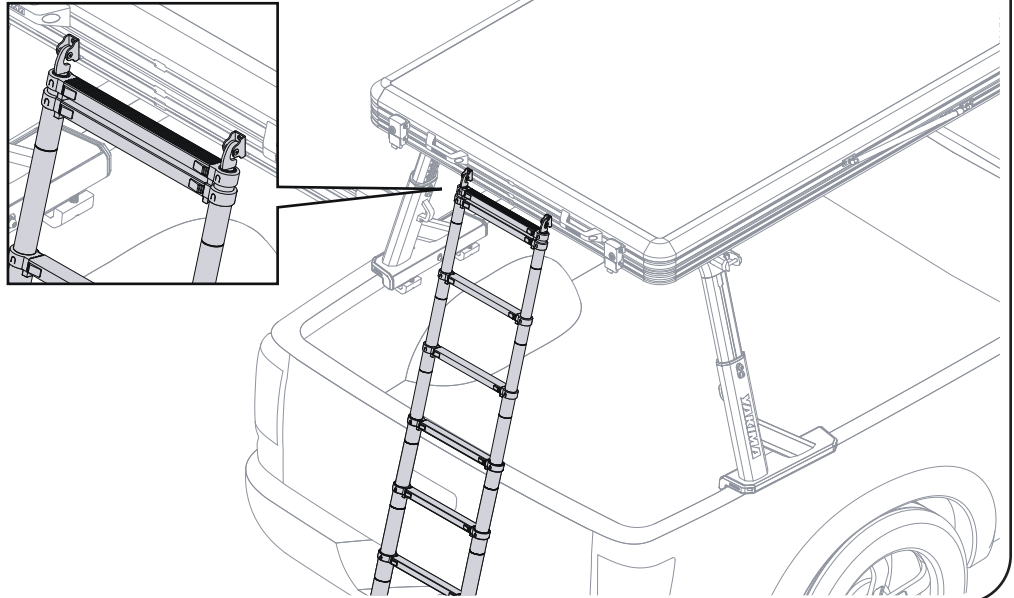
Verify that the tent is installed straight by measuring the distance from the end of the track to the clamps on the same side of the vehicle. If adjustments are needed, refer to the previous step to reposition the clamps, fully tighten, and recheck alignment.



## 10 ATTACH THE LADDER.

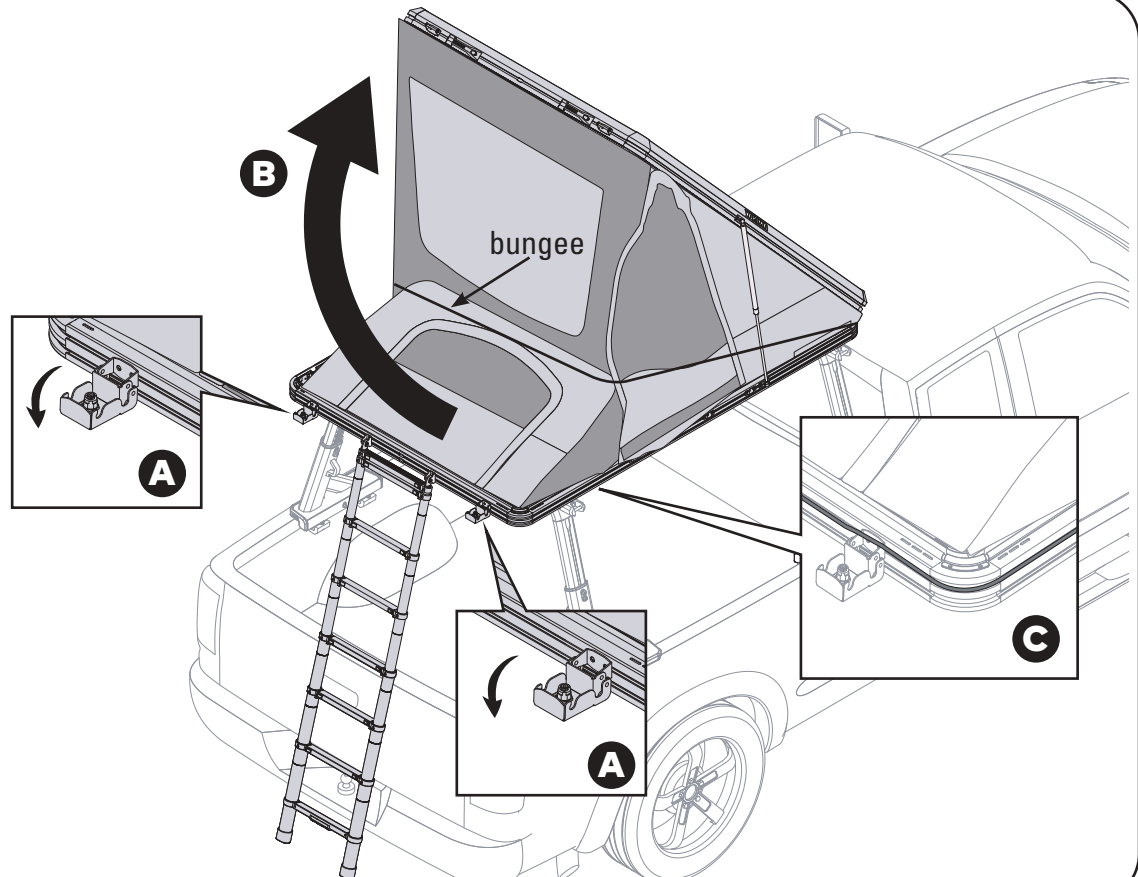
- Hook the ladder onto the two ladder mounts and extend it down to the ground. Ensure all steps are locked in place and that there is no bounce in the ladder.
- The ladder angle should be close to 75°. If the ladder needs to be shortened, stack any unused rungs beneath the top step.

**NOTE:** Be sure to read all safety warnings on the ladder to ensure proper use.



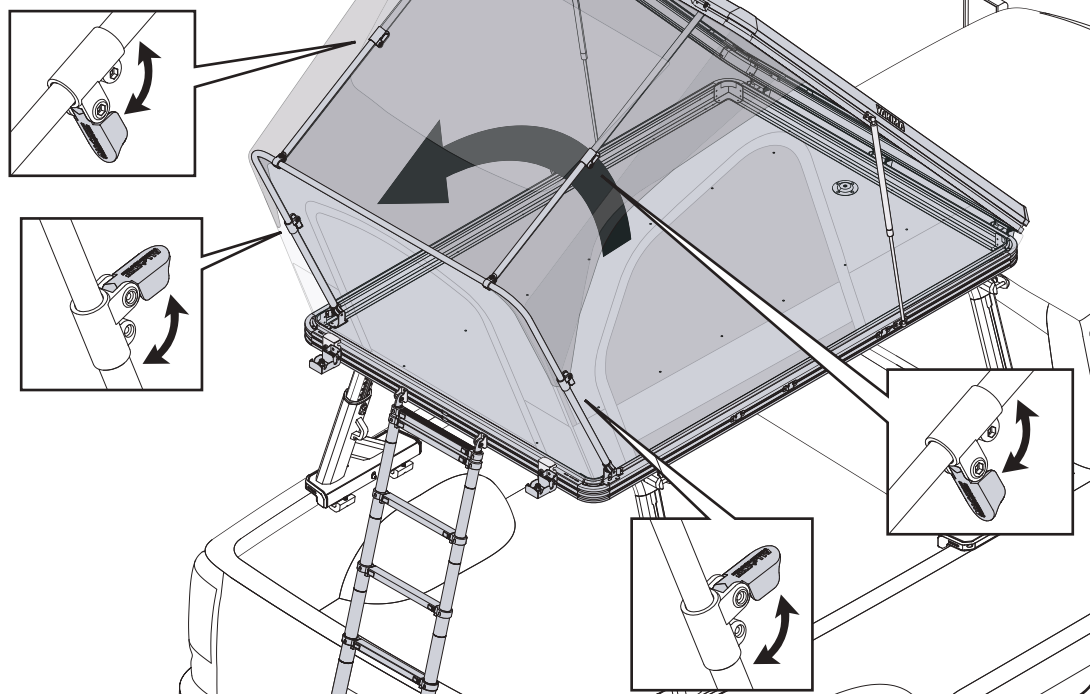
## 11 OPEN THE TENT.

- Open the latches.  
**NOTE:** Be careful not to pinch your fingers in the mechanism.
- Open the tent.
- Tuck the bungee cord around the corners into the T-slot.



## 12 EXTEND THE SUPPORT BAR.

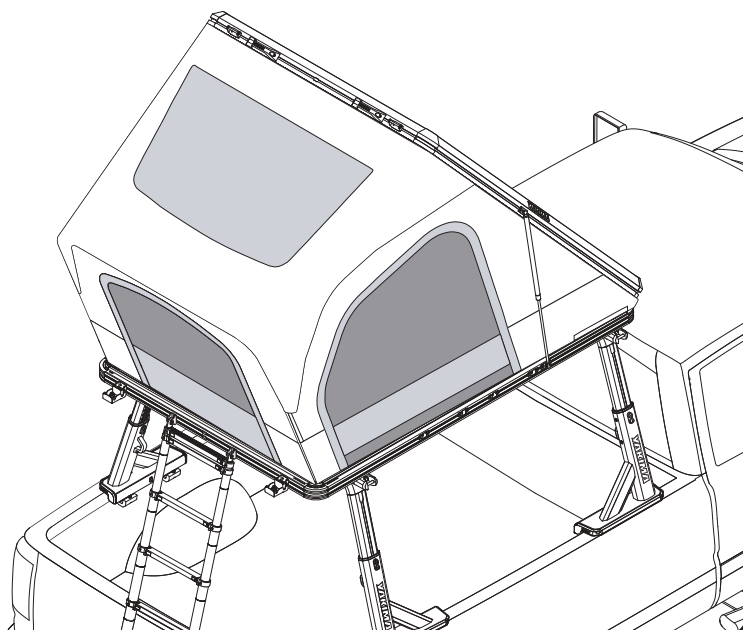
- Unzip and open the door.
- Reach inside the tent and extend the support bar.
- Open the lower levers, take up any slack in the fabric, and close the levers.
- Then, open the upper levers, take up any slack in the fabric, and close the levers.



## 13 WINDOW AND DOOR OPERATION:

- Each window has two panels: one for light blocking and privacy, and one for ventilation.
- Any of the three lower windows can serve as an entry door to the tent.

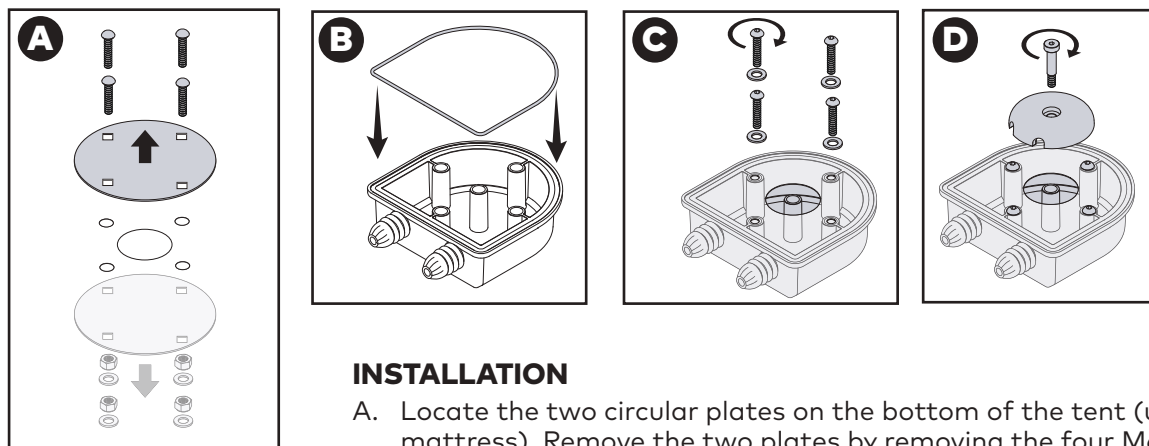
**NOTE:** To manage the doors or windows when lowered, tuck them under the mattress. This keeps them clear of the ladder and prevents damage.



## 14 LED LIGHT OPERATION:

The full wrap-around LED lighting inside the tent offers two color options: Bright White and Warm Amber, both of which are dimmable. The light controller is located at the base of the tent's ceiling. Before use, ensure it is connected to both LED power cords.

## 15 OPTIONAL: SOLAR PORT

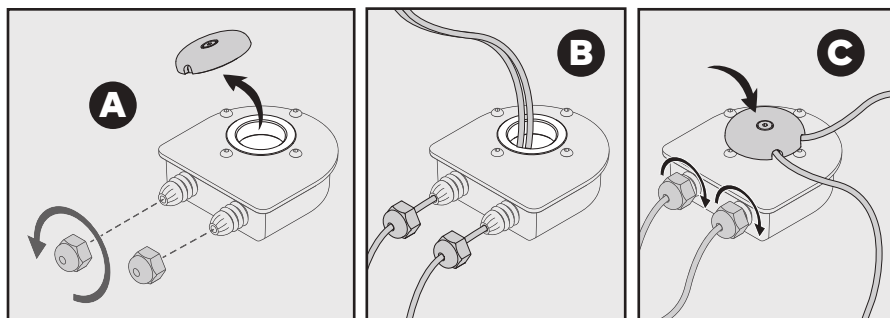


### INSTALLATION

- Locate the two circular plates on the bottom of the tent (under the mattress). Remove the two plates by removing the four M6 nuts, washers, and bolts using a wrench.
- Install the O-ring into the solar port body by pressing it into the recessed groove as shown in the diagram.
- Using a 3 mm hex wrench, place the port under the tent over the hole and attach it with four M5 x 25 mm screws and M5 washers as shown.
- Inside the tent (under the mattress), use the M5 shoulder screw to attach the cap.

### OPERATION

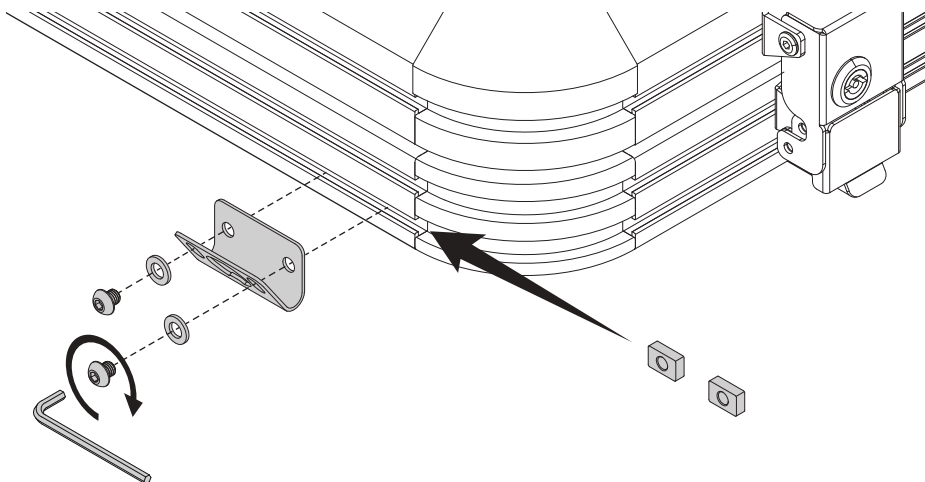
- Find the port hole cap beneath the mattress on the hinge side of the tent and remove it.
- Beneath the tent, unscrew and remove the port gland caps.
- Thread the wires through the glands, then replace the cap as shown.



**NOTE:** System is compatible with 5 - 10 mm cables.

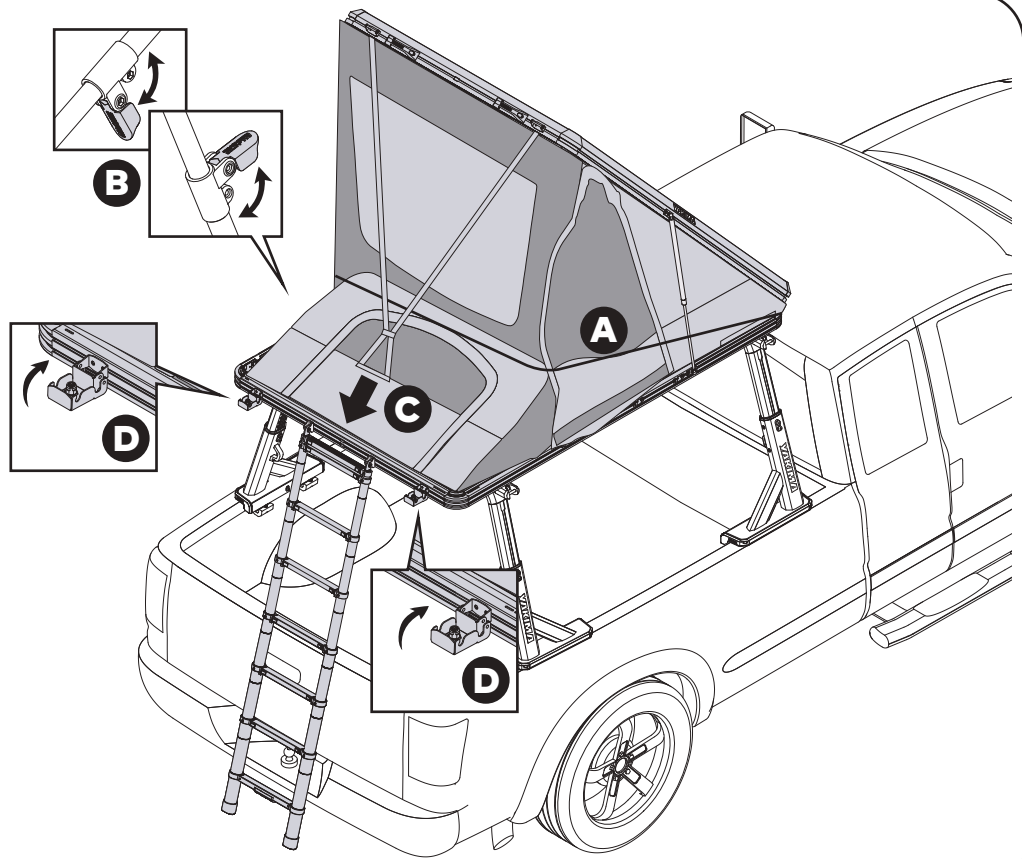
## 16 INSTALL THE BOTTLE OPENER.

Slide two M8 nut plates into the track at the desired location. Secure the bottle opener to the tent using two M8 washers and two M8 x 8 screws, as shown.



## 17 CLOSE THE TENT.

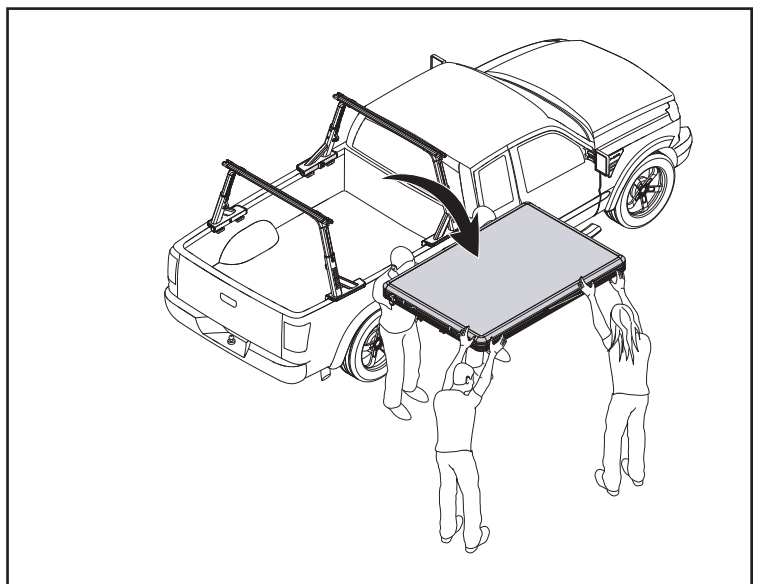
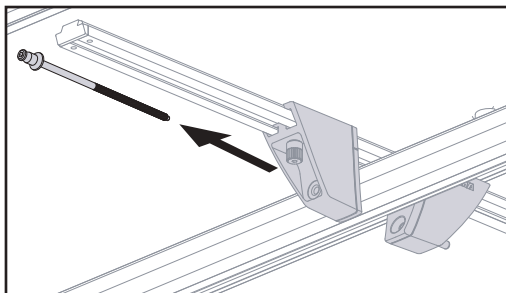
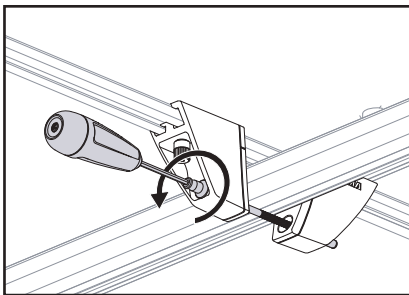
- A. Untuck the bungee cord and move it to the center of the tent to help gather the material.
- B. Reach inside the tent and open the levers on the support bars.
- C. Pull the webbing strap to close the tent, tucking in any fabric and the webbing strap inward as needed.
- D. Close the latches and verify that the lid is secure.



## REMOVAL

### 1 REMOVE THE TENT FROM YOUR VEHICLE.

- With the tent closed and securely latched, use the torque wrench to loosen and remove the clamp rods, then open the clamps.
- With assistance from at least three others, lift the tent off your vehicle's crossbars. Store the tent and clamp rods in a safe location.



**NOTE:** Be mindful of antennas or other potential contact points on the vehicle's roof.

## IMPORTANT WARNINGS

- Remove your tent and Yakima rack before entering an automated car wash.
- Do not use fuel-burning or oxygen-consuming devices inside the tent. These include candles, gas lanterns, kerosene lamps, stoves, and cooking and heating appliances.
- Do not pitch the tent near a campfire or any other flame source.
- Inspect the mounting hardware of the tent before driving away.
- Never extend the ladder beyond the predrilled holes and factory-locking position.
- Do not drill additional holes into the ladder.
- The ladder angle must be at or very near to 75°.

### **Rack Installation**

Improperly mounted roof-racks and tents can come loose during travel and cause serious accidents! Installation, handling, and use must be carried out in accordance with product and roof rack instructions.

Check the attachment hardware and the load to make sure everything is secure.

- Before driving away
- After driving a short distance, following tent install
- At regular intervals on longer trips
- Every 2 hours on bad terrain

### **Vehicle Driving and Regulations**

The speed driven must be suited to the load transported and to official speed limits. When transporting any load, the speed of the vehicle must take into account all conditions such as the state of the road, the surface of the road, traffic conditions, wind, etc. Vehicle handling, cornering, braking, and sensitivity to side winds will change with the addition of rooftop loads.

## ROOF-TOP TENT CARE AND MAINTENANCE

Your Yakima rooftop tent is designed to be a durable companion on your adventures. In order to keep it performing at its best, we recommend some simple care and maintenance steps that will help prolong the life of your rooftop tent.

- Prior to each use, inspect your rooftop tent mounting hardware. If necessary, clean with a solution of mild detergent and water. Periodically lubricate the threads on your hardware with a light, synthetic bicycle lubricant to maintain performance.
- Dry your rooftop tent thoroughly before you close it. If unable to properly dry your rooftop tent prior to closing, open it up and air-dry it at your next opportunity.
- Failure to properly dry out your tent can lead to the growth of mold and mildew, which can degrade the tent material, causing discoloration and foul odor. Mold and mildew growth is not covered under your rooftop tent warranty.
- Proper storage of your rooftop tent when not in use will prolong its life. Ensure tent is fully dry prior to storage, and store it in a cool, dry location free from direct sunlight.
- Zippers should be pulled with even force and in gentle fashion. Never force a zipper open or closed as it may damage the zipper. Keep your zippers free from dust and dirt, and periodically apply non-scented bees wax to the zipper-teeth as lubrication. This will prolong the life of your zippers.
- The ladder should be wiped free of any dirt or dust prior to collapsing the tent.
- Periodically wipe down the aluminum telescoping side rails of the ladder with silicone spray and a cloth. DO NOT spray silicone spray directly on the ladder tread surfaces.
- Keep your mattress dry and free from dirt. Prior to closing your rooftop tent, lift your mattress and ensure the underside is dry. Remove mattress and air-dry if necessary. To clean the mattress cover, remove it and machine wash on the gentle-cycle setting with Woolite™ detergent. Then hang-dry. DO NOT TUMBLE-DRY.
- To clean your rooftop tent, use a mild detergent and warm water gently applied with a sponge. Rinse with a clean wet sponge and allow to dry thoroughly.
- If mildew and/or mold have begun to grow on your tent, we recommend cleaning the affected tent fabric by sponging-on a solution of 1 cup Lysol™ mixed in 1 gallon of hot water and allowing it to dry. Next, prepare a solution of 1 cup lemon juice concentrate and 1 cup salt in 1 gallon of hot water. Sponge this solution directly into the affected areas to rinse out the Lysol solution. Then allow it to air-dry completely. Taking these steps will stop the growth of the mildew and help eliminate odor; however, they may not completely remove the stains.
- Avoid excessive sun exposure to your tent to prolong the life of the fabric. Over time, UV rays can degrade tent fabric and waterproof coatings. If your rainfly material begins to break down due to exposure and use, we suggest washing the fabric with mild detergent and water, followed by a treatment of a water repellent such as 303 Fabric Guard™. Consult your local outdoor store for other tent fabric-care products and use as directed.