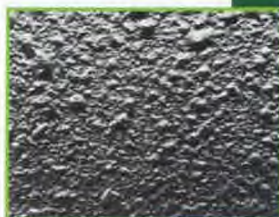


Preparation – Mixing ratio

Mipa Protector is providing an excellent mechanical and chemical resistance (eg. truckbeds). The excellent filling power enables extremely high-build properties. Easy to apply since 750 ml paint material is already filled in 1,1-litre underbody can. Just add 250 ml of Mipa 2K-Härter H 10. Shake thoroughly for 2 min. and apply this mixture using the underbody spray gun.

Application



Standard texture

1. Apply first a medium wet coat with 2 – 4 bar (29 – 57 psi)
2. Subsequent coats can be applied after 10 min. – 1 hour flash-off time.
3. To achieve a coarse texture reduce pressure to 1 – 1,5 bar (14 – 21 psi). Distance to the object 45 – 60 cm (1,5 – 2 foot).

HLVP gravity feed spray gun; Use nozzle 2.5. Up to 10% Mipa 2K-Thinner can be added.



Medium texture

1. Apply first a medium wet coat with 2 – 4 bar (29 – 57 psi).
2. Subsequent coats can be applied after 10 min. – 1 hour flash-off time.
3. To obtain a medium texture reduce pressure to 2 bar (29 psi). Distance to the object 45 – 60 cm (1,5 – 2 foot)

HLVP gravity feed spray gun; Use nozzle 2.0 – 2.5. Up to 10% Mipa 2K-Thinner can be added.



Fine texture

1. Apply first a medium wet coat with 2 – 4 bar (29 – 57 psi)
2. Subsequent coats can be applied after 5 min. – 1 hour flash-off time.
3. To realize a fine texture apply Mipa Protector with 3 – 4 bar (43 – 57 psi). Distance to the object 60 cm (2 foot).

HLVP gravity feed spray gun; Use nozzle 1.6 – 1.8. Up to 20% Mipa 2K-Thinner can be added.

Special note

For professional use only. Read full instructions and safety data sheet before use.

- We recommend to spray a test panel first to ensure the desired texture is achieved.
- Play with air pressure and distance to get desired texture.
- Don't apply Mipa Protector directly in the sun. Product temperature: 15 – 26°C (59 – 79°F).
- Pot life after mixing with hardener 1,0 – 1,5 hour at 20°C (70° F).
- Rolling of Mipa Protector results in a lower build. Mohair or micro fibre rolls are recommended.
- Apply Mipa Protector in 2 – 3 layer with a flash off time of 30 min. – 1 hour between coats.
- Do not use Mipa Protector directly on oily, resinous wood.
- Remove all masking tape while final coat is still wet.
- Do not allow Mipa Protector to come in contact with water/rain for at least 3 days.
- Do not place heavy loads on the surface until Mipa Protector is fully cured (min. 7 days / 20°C / 70° F).

Tools should be cleaned immediately after use.