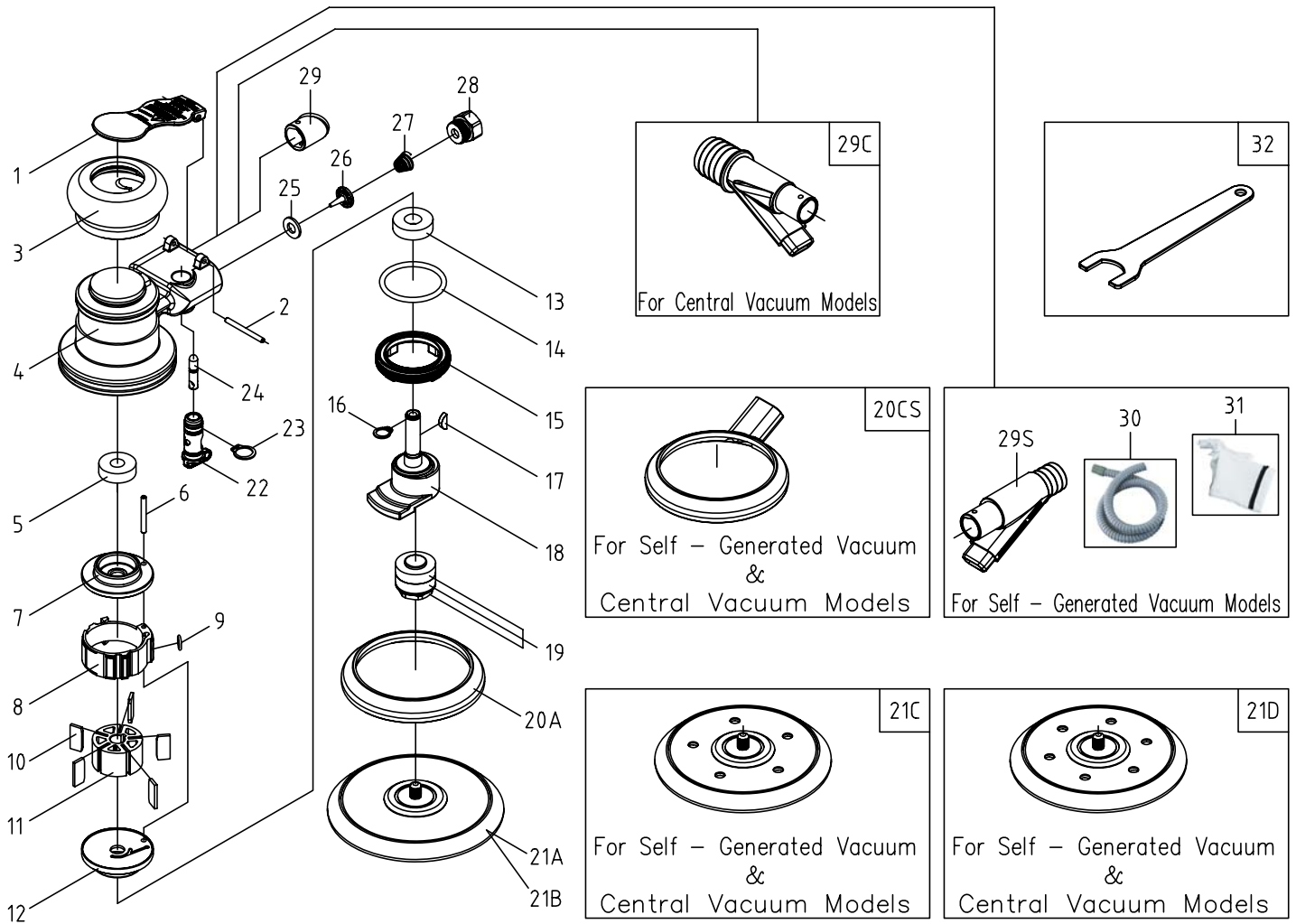


RANDOM ORBITAL SANDER PARTS



PARTS LIST

No.	Description	Q'ty.
1	Valve Lever	1
2	Spring Pin	1
3	Housing Cap	1
4	Housing	1
5	Bearing	1
6	Spring Pin	1
7	Rear Plate	1
8	Cylinder	1
9	O-Ring	1
10	Rotor Blade	5
11	Rotor	1
12	Front Plate	1
13	Bearing	1
14	O-Ring	1
15	Nut	1
16	Snap Ring	1
17	Rotor Key	1
18	Motor Shaft Balancer	1
19	Bearing + Pad Retainer Set	1 Set

No.	Description	Q'ty.
20A	Sleeve	1
20CS	Sleeve	1
21A	5" Pad	1
21B	6" Pad	1
21C	5" Pad	1
21D	6" Pad	1
22	Regulator Lever Set	1
23	Snap Ring	1
24	Valve Tappet	1
25	Washer	1
26	Adjust Shaft	1
27	Compression Spring	1
28	Adapter	1
29	Silencer	1
29A	Couplings (For Central Vacuum Models)	1
29B	Couplings (For Self-Generated Vacuum Models)	1
29C	Couplings (For Central Vacuum Models)	1
29S	Couplings (For Self-Generated Vacuum Models)	1
30	Air Hose	1
31	Vacuum Storage Bag	1
32	Wrench	1