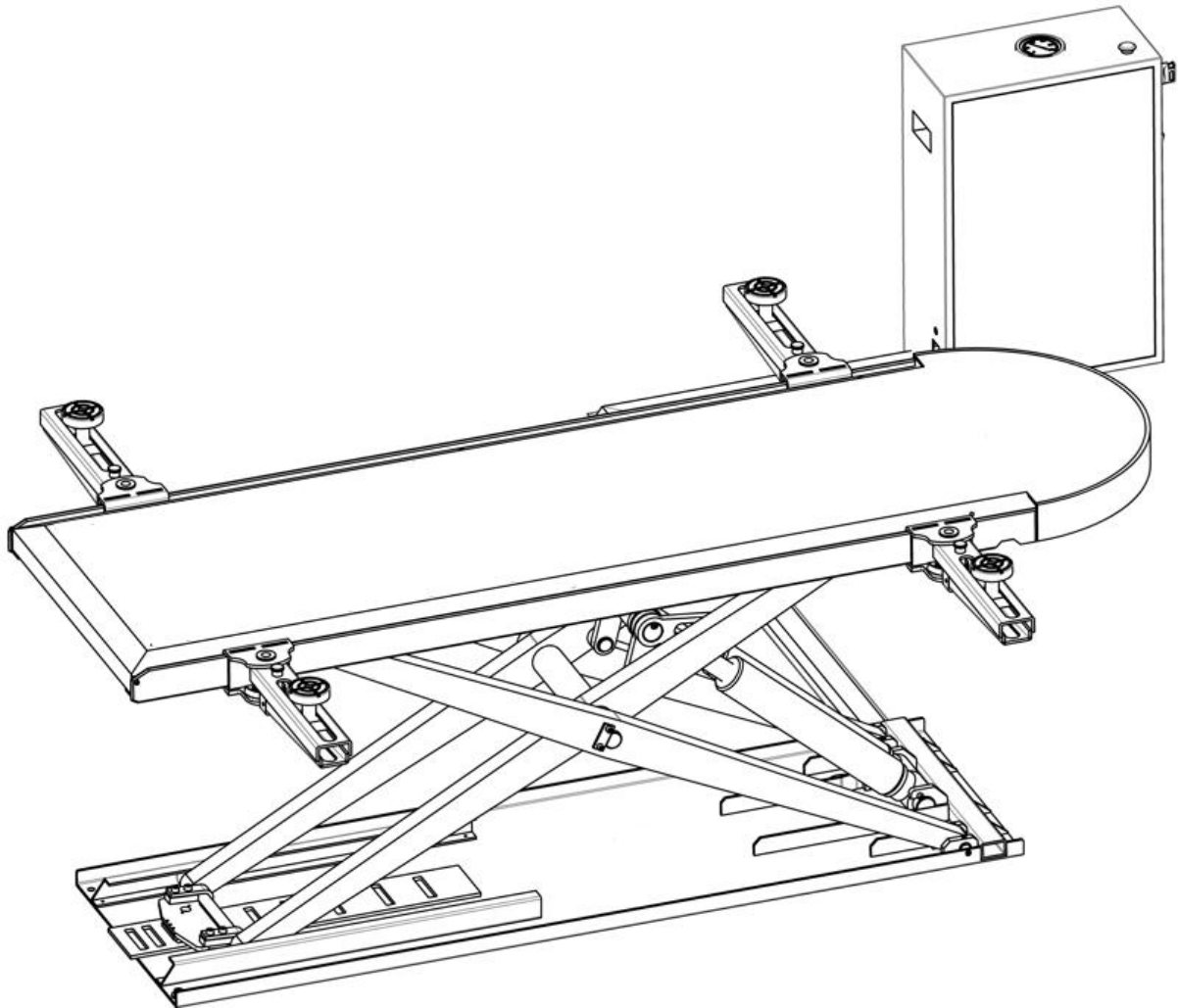




User and Maintenance Manual



**EN** Pages 01 of 34

# EASYBENCH 1

Vehicle Lift

# 1 - SAFETY AND OPERATIONAL CHECK

In order to ensure that your vehicle lift has been manufactured in strict compliance with applicable standards and safety requirements, below are the results of the tests your product underwent prior to shipment. (Please always keep this document provided at the time of purchase; it is an integral part of the lift.)

## The following components are included:

- Technical identification plate (2 metal plates – see photos below)
- **Serial No.**
- User Manual
- Maximum authorized load capacity
- “Up” and “Down” pictograms on the control pendant.
- CE marking on the lift and the CE Declaration of Conformity.

## Operation and safety checked:

Overpressure valve set to a **maximum of 230 bar**.

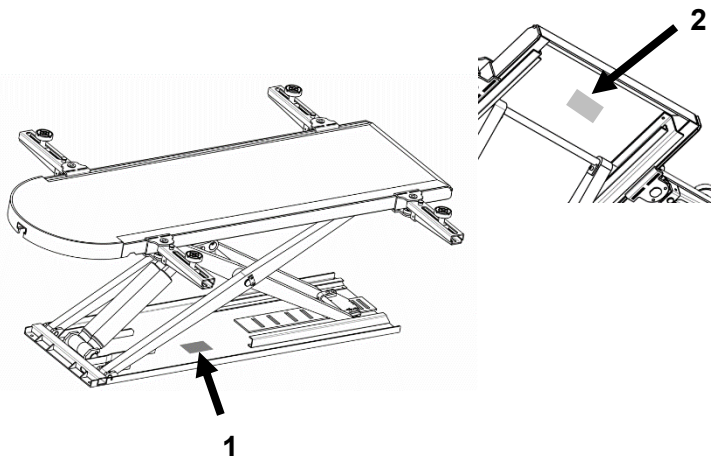
## Check:

- Function test without load over a complete cycle.
- Controls return automatically to the initial position.
- No damage to the cylinders.
- All screws tightened and all circlips in place.
- Condition of the hydraulic hose (secure attachment and leak-free connections).
- Dynamic test at 110% of the maximum rated load (CMU) over a full stroke.

## Serial No.:

Locate the serial number on the lift's nameplate and on the Declaration of Conformity. There are two nameplates, as shown in the photos below.

GYS S.A.S - 1 Rue de la Croix des Landes - CS 54159 53941 Saint-Berthevin Cedex - France		CE
<b>EasyBench 1</b>	Made in PRC	
Ref: 088238	Air pressure: 10 bar / 145 psi max	
Max. Load: 2500kg		
Min height: 105mm	Max height: 1600mm	
Dimensions:	2510 mm x 766mm x 105mm	
Equipment weight:	550kg	
Year: 20XX	Serial No.: XXDC0XX-X/XX	



Thank you for your choice! To get the most out of your vehicle lift and ensure your safety, please read this user manual carefully before first use and keep it for future reference.

## 2 - DECLARATION OF CONFORMITY

We, **GYS SAS, 1 rue de la Croix des Landes, 53941 Saint-Berthevin – France**

Declare that the product: VEHICLE LIFT – **EASYBENCH 1,**

- Has been examined by the notified body CTI-CEM International. It has successfully passed the tests and inspections related to the EC type-approval.
- Is in compliance with the following directive:
  - **2006/42/EC 2006**– Directive on the approximation of the laws of the Member States relating to machinery
- No Harmonized standards applied in whole or in part:
  - **EN 60204-1 :2018** Safety of machinery – Electrical equipment of machines – Part 1: General requirements.
  - **EN 1493 : 2022** Vehicle Lifts
  - **EN ISO 12100 :2021** Safety of machinery – General principles for design – Risk assessment and risk reduction

<b>NOTIFTIED BODY:</b>	<b>Model</b>	<b>EC Type-Examination Certificate No.</b>
<b>CTI-CEM International Ltd , Dublin - Ireland</b>	<b>EasyBench1</b>	<b>C-353-20-1018-24-01-G1</b>

The product covered by this declaration has been manufactured in accordance with the model presented for the EC type-examination. A technical file has been compiled.

Saint Berthevin, le 01/01/2021  
Bruno Bouygues, C.E.O.



### 3 – GENERAL INFORMATION

---

This user manual contains important information for installation to ensure proper commissioning and to guarantee the safe operation of the vehicle lift. Following the instructions reduces risks and helps extend the product's service life. This manual includes a form to record regular safety checks. Use the <<Periodic Maintenance Report>> form and the <<Maintenance Log>> to document inspections (it is recommended to make a copy of the forms before completing them for the first time or to download them from our website).

The two pictograms below, included in this documentation, are intended to raise the user's awareness of potential risks and to provide guidance on the use of the lift.



Indicates a serious risk that may result in severe bodily injury and significant material damage if not observed by the user.



Provides a usage recommendation

#### Installation and Inspection:

Safety-related work and safety inspections are reserved exclusively for specially trained personnel. These individuals are referred to in this documentation as experts and/or authorized personnel.

The illustrations in this manual are provided for guidance only and do not necessarily represent the design of the equipment available on the market at any given time. The equipment shown in the manual may be modified without prior notice. The content of this publication may also be changed without notice.

*The disclosure of this document without the consent of the manufacturer GYS is strictly prohibited (whether in paper form or published on the Internet). Otherwise, GYS reserves the right to take legal action*

### 4 – LIMITATIONS OF LIABILITY

---

This equipment is a vehicle lift designed in compliance with applicable standards. All data and recommendations provided in this user manual have been compiled in accordance with these standards and regulations, as well as our extensive knowledge and experience.

**GYS cannot be held liable for any property or bodily damage resulting from:**



- Failure to follow the user manual.
- Improper or unsafe use.
- Use by unqualified and/or unauthorized personnel.
- Unauthorized modifications to the vehicle lift.
- Insufficient maintenance.

## 5 – INTENDED USE

---

This lift is intended for passenger vehicle repair operations. It allows vehicles to be lifted safely. The maximum permissible load is 2.5 tonnes.

Proper use of this lift includes reading and fully understanding this user manual and complying with all instructions contained herein, with particular attention to the safety instructions. This lift must be used and handled in accordance with this manual.

A safety perimeter must be defined (minimum 1.5 m around the vehicle), within which no person is allowed to be present during lifting operations.

Lifting people or miscellaneous objects is strictly prohibited. No person must be inside the vehicle to be lifted. It is forbidden for anyone to climb onto the load or the load-supporting device when it is in the raised position. This lift has been designed to lift a vehicle completely. Partial lifting of a vehicle is not permitted.

This lift must be used indoors in a work area and protected from weather conditions (sheltered from wind, rain, and freezing temperatures).

The operating temperature range is between **5 °C and 45 °C**. In the event of prolonged storage in an environment where the temperature is below **0 °C**, allow at least **12 hours** at the workplace temperature before use.

Do not use the lift in excessively humid conditions. In the event of direct water splashes on the lift, wipe it dry using a clean cloth.

Never lift loads on sloping ground ( $> 3^\circ$ ). The floor must be flat and sufficiently strong to prevent subsidence under the load (minimum concrete thickness **140 mm**, quality equivalent to **C25/C30**). Under no circumstances should the lift be placed over an inspection pit or access hatch in the floor.

It is prohibited to use this lift on a boat or vessel (stability issues).

Thoroughly clean the vehicle contact surfaces and rubber pads before each use. Remove all grease and oil residues that could cause the vehicle to slip.

Vehicles must be lifted only at the lifting points recommended by the vehicle manufacturer. Carefully ensure that the lift does not come into contact with areas close to airbag deployment sensors during lifting.

Do not place the rubber pads on plastic trim or plastic-covered areas.

In the event of a severe impact to load-bearing and/or structural components of the lift, the equipment must be taken out of service immediately. Contact your dealer or the manufacturer to assess the damage before returning the lift to operation.

If there is any doubt regarding the structural strength of the vehicle (presence of corrosion): **do not lift the vehicle**.

Comply with all workplace safety and risk prevention regulations applicable in the country of use (national labor regulations). This also includes the obligation to carry out all inspection and maintenance work at regular intervals.

In the event of improper use of the lift, operational safety cannot be guaranteed.

Any personal injury or material damage, including damage to vehicles, resulting from improper use of the equipment shall under no circumstances be attributable to the manufacturer, but to the operator using the lift.

The lift must not be used in a potentially explosive atmosphere, and working near a heat source is not recommended.

It is prohibited to use spare parts other than original parts certified by the manufacturer.

## 6 – PACKAGING AND UNLOADING

The lift is heavy (weight between 550 kg and 600 kg). Only approved lifting equipment must be used to prevent accidents during transport, unloading, and positioning.



Caution during transport. Risk of slipping and injury if personal protective equipment is not worn.

Upon delivery, check for any external damage caused during transport. In case of visible damage, leave the goods and packaging as they are. Do not use the goods and contact your dealer immediately. Otherwise, a formal claim must be made to the carrier. Under no circumstances can GYS be held liable.



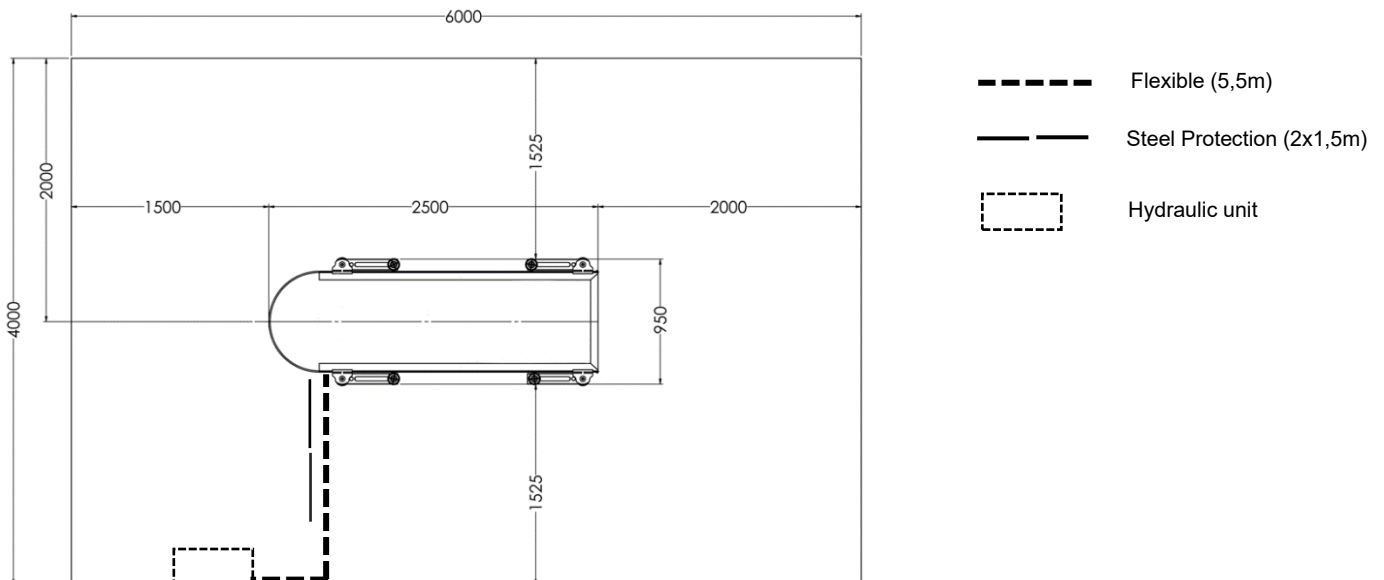
Unloading can be carried out using a forklift or a manual pallet truck, provided that the pallets are placed on the ground. The lift weighs 550 kg and is mounted on four 10 cm high pads. Do not remove these pads—remove them only just before fixing the lift to the floor. The lift can be lifted in either direction (fork extensions are required when lifting lengthwise). Wear gloves, appropriate clothing, and safety shoes.

1 - Identify an area with sufficient space and good lighting. A minimum recommended area is 4 m wide by 6 m long, with a minimum ceiling height of 4.5 m, as shown below. Use handling equipment (a pallet truck is sufficient) to position the lift within the area.

Position the lift according to the recommendations shown in the diagram below and the dimensions indicated.



If you wish to use the pull brackets on both sides of the lift, it is recommended to install the lift in an area of 6 m × 6 m. If only one side is used, an area of 5 m × 6 m is sufficient.

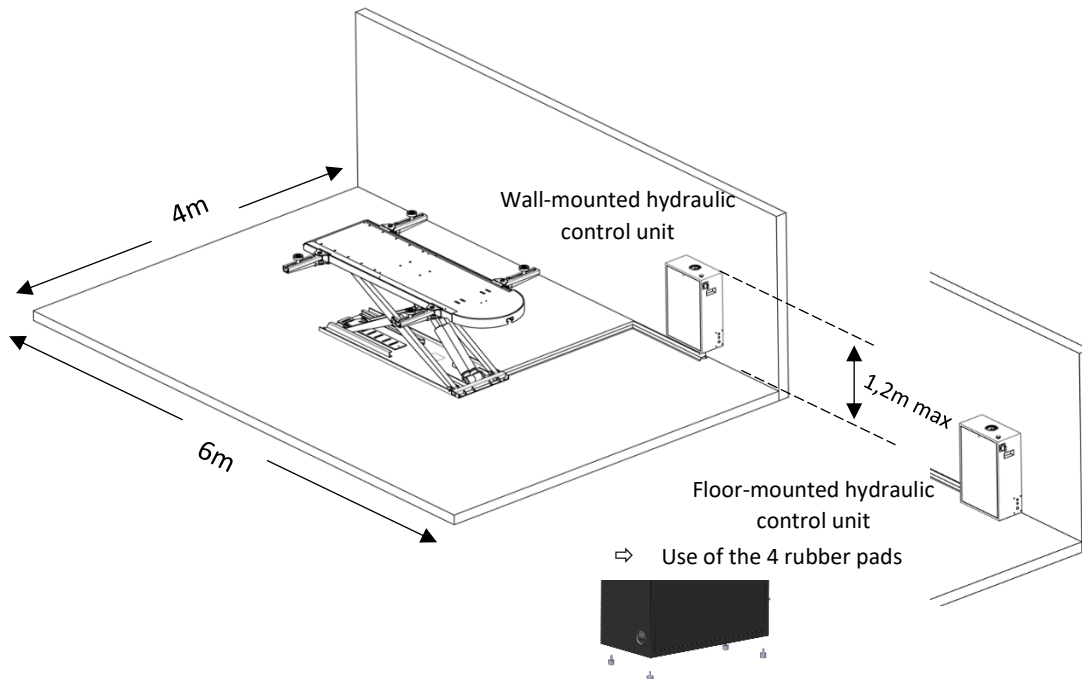


- 2 - Carry out a visual inspection to ensure that nothing is damaged.
- 3 - Uncoil the hose and perform a visual inspection before connecting it to the hydraulic unit.
- 4 - Unload the hydraulic unit and perform a visual inspection of the exterior.
- 5 - Pre-position the hydraulic unit and the hose on the floor.
- 6 - Packaging must not be disposed of in regular trash; it should be taken to a recycling center.

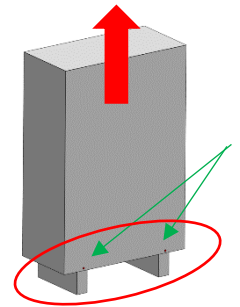
## 7 – LIFT INSTALLATION



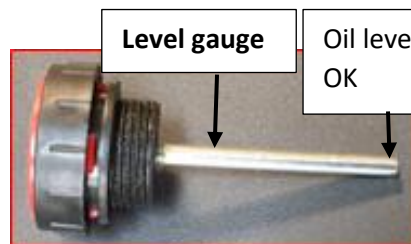
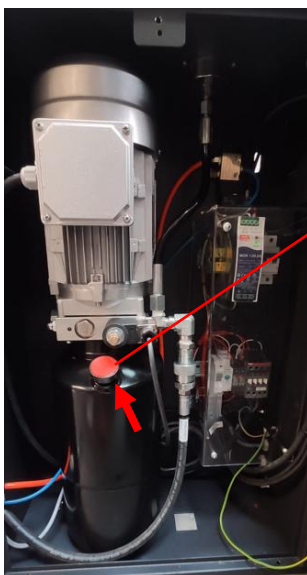
It is the owner's responsibility to ensure that the equipment has been installed in accordance with the provided instructions. The owner is also responsible for ensuring that the lift has been inspected in compliance with local regulations before use.



To unpack the hydraulic unit properly, please remove the 4 screws at the bottom of the crate.



- Remove the cover of the hydraulic control unit.
- R • Fill the hydraulic unit with oil of viscosity grade 32 CST (GYS reference 062160 / type IKV-TRIBOLINE HLQ HM-32) and ensure that the oil level slightly exceeds the end of the dipstick (this is the minimum and correct level), which is located on the cap when the cap is fully screwed on.



### List of oils from the 3 major manufacturers:

- **TOTAL: AZOLLA ZS 32**
- **ELF: ELFOLNA DS 32**
- **MOBIL: MOBIL NUTO H 32**

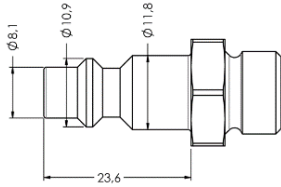


Before filling the reservoir, ensure that the lift is in the minimum (fully lowered) position.

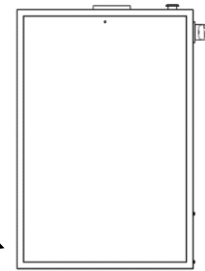


Use a properly fitting funnel and monitor the level during filling. **The exact volume is between 5.5 and 6 litres.**

- Screw the included air fitting onto the hydraulic unit using Teflon tape. This is an ISO 6150 B fitting. Use a different fitting if the user's installation does not allow for this one.

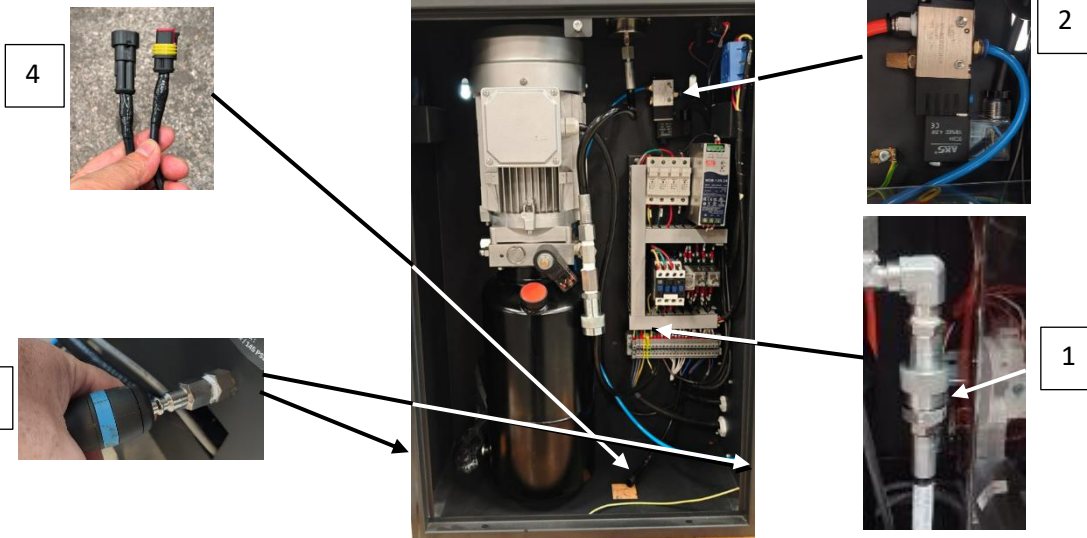


ISO 6150 B fitting included with the product



Hydraulic Control Unit

- Make the hydraulic, electrical, and pneumatic connections between the lift and the control unit only by authorized personnel with expertise in these areas (risk of electric shock – always work with the control panel de-energized).



You must connect:

- 1 Connect the hydraulic hose to the hydraulic unit, routing it through one of the designated openings in the enclosure. The hose must be connected to the unit using the quick-release anti-drip fitting, as shown in the photo.



Please note this important information if you need to install the unit beyond this distance: **The hose length is 7 m, with approximately 5.5 m between the lift outlet and the hydraulic unit inlet.**

- 2 You must also connect the blue air hose, which activates the mechanical safety, to the solenoid valve located inside the hydraulic unit (see photo above). Take care not to bend or pinch the hose. Connect the hydraulic unit to the air supply.
- 3

**An air pressure of 7 to 8 bars is recommended for optimal operation of the safety device.**



It is recommended to use a filtration system of at least 5  $\mu\text{m}$  upstream of the installation, and to add lubrication to the pneumatic circuit at a rate of 1 to 2 drops of oil per minute (oil type ISO VG 32 or special pneumatic tool oil).

The water and oil separator effectively captures water vapor and dust, preventing damage to pneumatic tools and accessories caused by moisture and dust, and ensuring optimal performance of your equipment

- 4 You must also connect the position sensor cable to the unit using the quick-release fitting located inside the hydraulic unit.

On the right side of the hydraulic unit is the power cable (3-phase with ground) equipped with a 5-pin 400V three-phase plug. Connect it to an electrical circuit protected by a 16A fuse, or run a dedicated line and connect it inside the hydraulic unit using the same electrical protection.

Turn the isolator switch to the <<ON>> position.

- Use the remote control to perform several lift and lower cycles to check proper operation, initially without raising the lift to its maximum height.

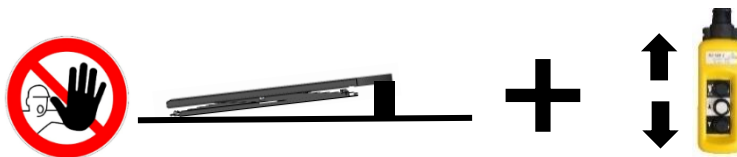


**If the lift does not rise within 3 seconds while the motor is running (you can hear it running but there is no movement), release the “Up” button on the remote control. Turn the isolator switch to “OFF”, disconnect the power, and open the plug: swap any two phases in the plug and perform the test again (this will reverse the motor’s rotation direction).**

- If the lift is operating correctly, proceed to position it permanently on the floor following the instructions below.



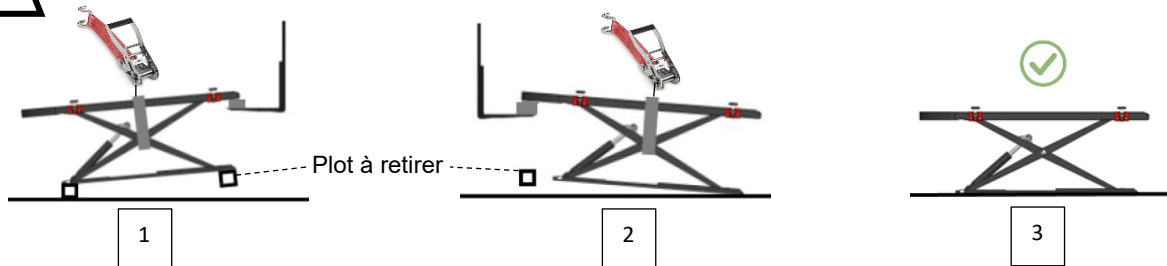
It is forbidden to raise or lower the lift using the remote control when it is not parallel to the floor. There is a risk of equipment damage! The lift must either remain on its 4 pads or be on the floor in order to use the remote control to raise or lower it. The platform and frame must remain parallel to the floor to safely operate the lift.



Raise the lift by pressing the “Up” button and lock it in one of the mechanical safety positions by pressing the “Down” button. To lower the lift to the floor, first remove the 10 cm height pads on one side, then on the other side, lifting the platform as needed.



**It is forbidden to lift the lift by the platform alone.** To lift the lift using the platform, the two scissors and the platform must first be securely strapped together at the center of the table (protect the lift with cardboard).



- Drill the floor and secure the lift, referring to the paragraph below entitled “Anchoring the Lift to the Floor.”
- Place protective covers along the entire hose route (from the lift to the hydraulic unit) without fixing them permanently.
- Use the remote control to perform several lift and lower cycles to confirm the proper operation of the lift (without any load).



The lift must be permanently anchored to the floor. If this is not done correctly, there is a significant risk that the lift could tip over, causing serious damage and personal injury.

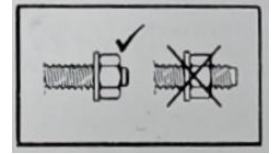
## Anchoring the Lift to the Floor :

The lift must be secured using anchor bolts as follows:

4 Wurth anchor bolts W-FAZ/A4-15-35-M12X110, Ref. 5928 412 015

⇒ **Tightening torque of 50 Nm when using the supplied anchor bolts.**

We strongly recommend drilling completely through the concrete slab with a Ø12 mm bit. Remove all dust from the holes before inserting the anchor bolts. Cutting the anchor bolts is strictly prohibited.



You may use a different brand, but you must use anchor bolts equivalent to the reference recommended above (ETA-99/0011 approval) and apply the tightening torque specified for the bolts you use.

The tightening torque is indicated on the technical datasheet and must be respected and recorded in the **<<Installation Report>>**, along with the commercial reference, to facilitate monthly checks and periodic maintenance.

The lift must be installed on a flat floor with the following characteristics::

- The thickness must be at least 140 mm.
- The concrete quality must be equivalent to C25/30, with a minimum compressive strength of 25 MPa (250 kg/cm<sup>2</sup>).



If there is any doubt about the floor quality (e.g., cracked concrete), have the floor inspected by an expert before anchoring the lift. There is a risk of tipping, which could cause serious property damage and personal injury.

Position the hydraulic unit either on the floor (using the 4 rubber feet supplied with the product) or mounted on a wall using two wall plugs (not included). Be careful not to exceed a height of 1.2 m from the floor to the top of the unit, in order to maintain easy access to the emergency stop button and to be able to monitor the hydraulic circuit pressure.

## **8 – PERSONAL PROTECTION EQUIPMENT PPE**

The operator must be equipped in accordance with the occupational risk prevention standards applicable in their country and must take all necessary measures to maintain safety at their workstation. During operations, the operator must ensure their own safety as well as the safety of people and objects nearby. All recommendations described in this manual must be followed.



Hydraulic oil is a hazardous product if it comes into contact with the eyes or bloodstream. In such cases, contact your doctor immediately. Never use your hand to check for a hydraulic leak.

## **9 – COMMISSIONING**

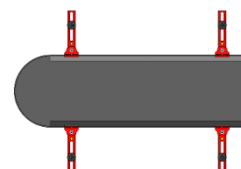


Wear the necessary protective equipment: gloves, appropriate clothing, and safety shoes.

When commissioning the lift, it is important to review all the information on the “Installation Report” form and complete it..

### **STEP 1 :**

The lift must be positioned at mid-travel (approximately 80 cm height) and fitted with its 4 arms. Place the arms in the position shown below..



## STEP 2 :



This step is important and involves mechanical, hydraulic, and electrical risks. It must be carried out by one or more authorized personnel who have read and understood this manual..

✓ Check that the hydraulic unit is properly connected to the lift and that there is no risk of the hose being pinched when the lift is resting on the floor. You may wait until the end of this step before permanently securing the hose protections to verify the proper operation of the lift, or choose to fix them firmly to the floor to prevent tripping.

- 1 - Turn the isolator switch to “OFF” and then disconnect the power cable from the hydraulic unit..
- 2 - Open the cover.
- 3 - Inspect all connections to ensure everything is properly screwed and secured, and that there are no traces of oil inside the unit..
- 4 - Any anomalies found on the lift, the support arms, the accessories, or the hydraulic unit must be photographed and sent to our after-sales service as soon as possible.

[sav@gys.fr](mailto:sav@gys.fr) include in the email subject: “Easybench1 Commissioning Anomaly” and attach your photo(s)/video(s) with a comment and your contact information. Our team will get back to you as soon as possible. (Note the serial number of the lift and of any affected accessories, if applicable).

## STEP 3 :

The lift is supplied with 4 support arms that can slide and rotate easily. The pin must be lifted to release it and allow rotation..



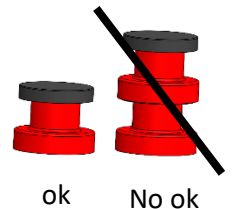
When the lift is in the lowered position, the system is free, and the arm can be positioned freely.

Each arm is equipped with a height-adjustable pad with a non-slip rubber cover, which must always be in place.

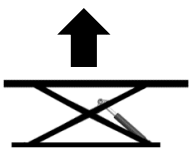
It is possible to use the 60 mm extensions in certain cases, such as 4x4 vehicles or high-clearance vehicles..



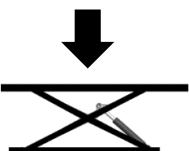
It is forbidden to use multiple extensions together



## Étape 4 :



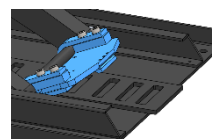
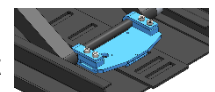
Press the “Up” button (1) on the remote control to raise the lift. As soon as you release the button, the lift stops.



Press the “Down” button (2) on the remote control to lower the lift. An audible warning signals the downward movement. There is a delay of a few seconds before the lift begins to descend as a safety precaution. As soon as you release the button, the lift stops. If you hold the button long enough, the lift will stop at one of the mechanical safety positions, which are spaced every 10 cm. To disengage the mechanical safety, raise the lift by at least 2 cm first.



**When you press the <<Down>> button (2) and simultaneously the <<Unlock>> button (3), the lift lowers until it reaches a height of 22 cm from the floor. Upon reaching this height, the lift stops.**



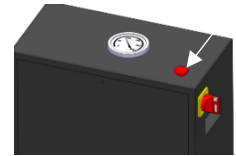


To fully lower the lift to the floor, after it has automatically stopped at 22 cm above the ground, release the “Down” button (2) and the “Unlock” button (3), then press the “Down” button (2) again to allow the lift to complete its descent to the floor.



Each time you lower the lift below 22 cm, make sure that nothing obstructs its descent to the floor—nothing between the scissors, under the platform, or any pulling accessories such as the support arms or clamps. Failure to do so could damage your lift and the floor.

**In case of emergency**, the lift can be stopped by pressing the emergency stop button located on top of the hydraulic unit. To reset, turn the button ¼ turn to deactivate the emergency stop and make the lift operational again.

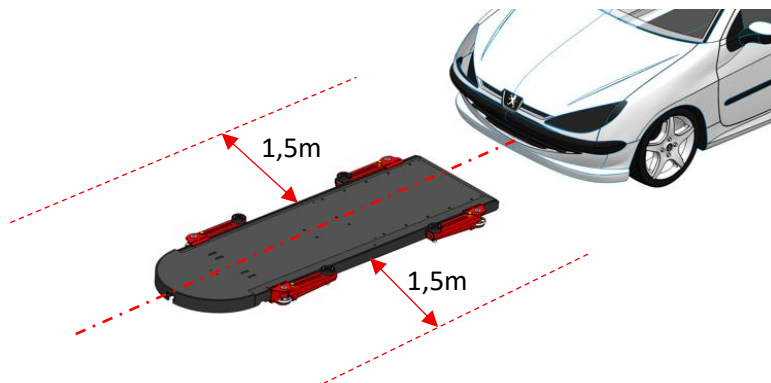


## 10 – OPERATING INSTRUCTIONS

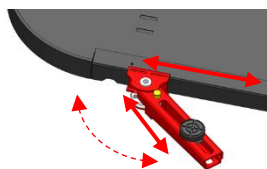


For optimal safety, it is recommended to establish a zone in which other objects or walls are kept at a minimum distance of 1.5 m. All lifting and lowering operations must be carried out with the operator’s full attention. No one is allowed to be in the defined zone while the lift is in motion. To ensure the operator’s safety, the hydraulic unit should be positioned at a distance that allows an escape route in case of emergency.

Ensure that the vehicle is as centered as possible along the longitudinal axis of the lift, as shown in the photo below.



Then position the support arms and adjust the pads so that they are under the vehicle’s lifting points (leave approximately 2 cm between the rubber pad and the lifting point). **Raise the lift by about 2 cm to lock the arms and check that they are securely engaged.**

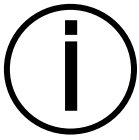


Position the pads only under the lifting points specified by the vehicle manufacturers.



**Once the support arm is correctly positioned, check that it is properly in place and securely locked by moving it from side to side.**

Raise the vehicle a short distance (all 4 wheels should lift approximately 10 to 15 cm off the ground) and verify the correct positioning of the pads and the stability of the vehicle. Once this check is complete, raise the vehicle to the desired height.

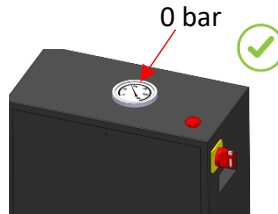
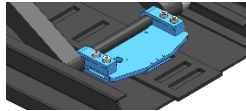


The lift is equipped with a mechanical stop at the end of the cylinder travel and a pressure relief valve to stop the lift from rising. It is advised not to keep the vehicle at the maximum height. For this position, it is recommended to lower the lift a few centimeters to mechanically lock it in a position on the mechanical rack. If the lift becomes stuck in the raised position, refer to section 14 “ANOMALIES, CAUSES, REMEDIES” to unlock the lift.



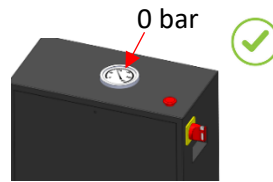
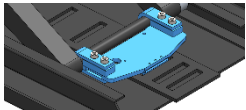
In general, it is recommended to always mechanically lock the lift and check that the pressure has dropped to 0 bar on the pressure gauge. This indicates that the mechanical safety device is engaged.

Lock – Mechanical safety engaged



Before working under a vehicle, the mechanical safety must be locked. In the event of a hydraulic hose leak or rupture, the lift will not lower even by 1 cm.

Lock – mechanical safety locked

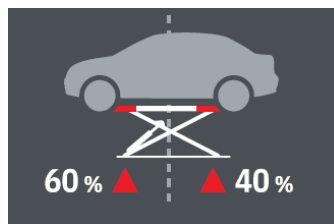
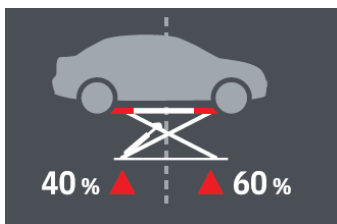


### Principle of maximum load for the lift:

This lift has been designed to withstand a **Maximum Working Load (MWL) of 2,500 kg (5,500 lbs)**, as shown in the figures below, regardless of the position of the arms (open angle or fully closed). This means that the load distribution must be respected, with 60% of the weight on the front of the lift and 40% on the rear, or vice versa. The lift is designed to support reversible load distribution.



When lifting only, favor positioning the front of the vehicle, where the weight is greatest, by placing it on the rounded side of the lift table.



**CMU: 2500 kg**  
SWL: 5512 lbs



Never lift a vehicle if the lift has not been securely anchored to the floor in accordance with the recommendations in this manual. Risk of vehicle tipping over.

By ensuring that the lift is aligned with the vehicle's longitudinal axis and by positioning the rubber pads under the lifting points specified by the vehicle manufacturers, this principle will be respected and the load can be lifted safely. This information is indicated on the lift.

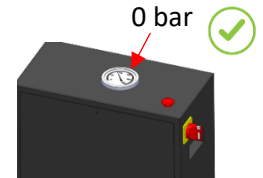
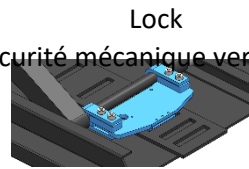
## 11 – INSPECTION AND MAINTENANCE

Inspections and maintenance must be carried out by authorized personnel at the intervals indicated in this manual. The following points must be observed to ensure a long service life and proper use of the lift. Reading this manual does not authorize an operator to perform work on the lift but allows them to provide precise information to the authorized distributor's technical service for faster repairs.

### **Before performing any work on the lift:**



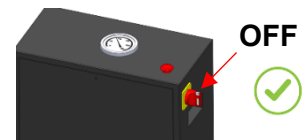
Position the platform at a sufficient working height and always mechanically lock it in position as shown below..



### **Before performing any work inside the hydraulic unit cabinet or on the remote control:**



Always ensure the isolator switch is set to "OFF" and then disconnect the power cord. Any electrical maintenance must be carried out by authorized personnel.



- Only original spare parts must be used, "Spare Parts."
- Recommended maintenance intervals must be observed, "Maintenance Table."
- For maintenance tasks not described or indicated in the user manual, contact your distributor and/or the manufacturer.



**Visually inspect your lift before each use. Do not use it if you detect any damage, significant wear, or a hydraulic leak.**



Clean the lift at least once a week to remove dust and dirt that could affect its long-term performance. Use self-cleaning cloths. Do not use water directly, nor flammable or corrosive liquids. Prefer using compressed air to remove dust, paying particular attention to the mechanical safety mechanism.

## 12 – TABLE MAINTENANCE

Maintenance Intervals	Tasks	Remarks
Monthly	<b>Cleaning</b>	Remove all accumulated dirt and dust. Refer to the section below, "Inspection Points," under the heading <i>Cleaning</i> .
	<b>Presence of all safety stickers</b>	Check that all safety stickers are present and legible. Refer to the section below, "Inspection Points," under the heading <i>Presence of All Safety Stickers</i> .
	<b>General inspection</b>	Visually inspect the lift, the cable routing, and the control unit to detect any anomalies. Refer to the section below, "Inspection Points," under the heading <i>General Inspection</i> .
	<b>Lubrication</b>	Lubricate all moving and friction parts. Refer to the section below, "Inspection Points," under the heading <i>Lubrication</i> .
	<b>Check oil level</b>	Always lower the platform to the floor, then open the cover of the control unit and check the oil indicator. Top up if necessary. Refer to the section below, "Inspection Points," under the heading <i>Check Oil Level</i> .

	<b>Check arm locking system on the floor</b>	Check that, when the lift is in its lowest position, the support arms are free to move and that the indexing system is inactive. Refer to the section below, "Inspection Points," under <i>Check Arm Locking System on the Floor</i> .
	<b>No-load test</b>	Perform a no-load test over the entire travel of the lift. Refer to the section below, "Inspection Points," under <i>No-Load Test</i> .
	<b>Safety check</b>	During descent, there is a pause accompanied by an audible warning. When the platform reaches a height of 22 cm ( $\pm 10$ mm) from the floor, it stops automatically. Refer to the section below, "Inspection Points," under <i>Safety Check</i> .
	<b>Emergency lowering</b>	Perform an emergency lowering test in case of power failure.
<b>Annual</b>	<b>Replace reservoir oil</b>	Using a pump, completely empty the reservoir with the lift in the fully lowered position to drain the maximum amount of oil from the system. Record this in the maintenance log.
	<b>Regular safety inspection</b>	Complete a "Periodic Maintenance Report" to document this check, or have the annual inspection performed by a qualified and authorized person. Record all details in the maintenance log.
<b>Every 5 years</b>	<b>Replace hydraulic hose</b>	Record this in the maintenance log.
<b>Every 10 years</b>	<b>General evaluation</b>	Perform an inspection to assess the remaining service life

Use the "Periodic Maintenance Report" form and the "Maintenance Log" to archive the annual inspections. A computerized management system may also be implemented.

Prepare an annual report on the condition of the lift and attach it to the user manual. These records must be kept at all times. Regular safety inspections must be carried out by an authorized person within the company or by an organization with the appropriate expertise. It is recommended to perform maintenance simultaneously and to refer to this manual for troubleshooting.

## 13 – INSPECTION POINTS

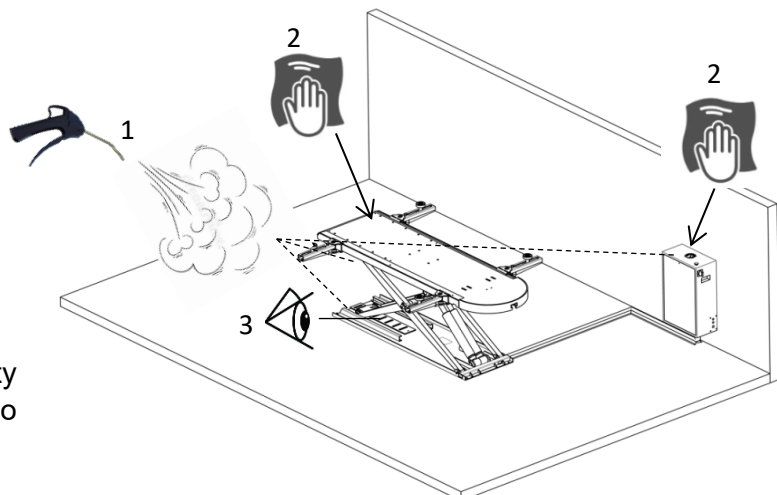
### Cleaning:

1 – Use compressed air to clean the top of the platform, the support arms, then the scissors, and finish with the platform fixed to the floor. **Pay particular attention to the mechanical safety components to remove dust from the openings..**

2 – Using a damp cloth, wipe down the entire lift.

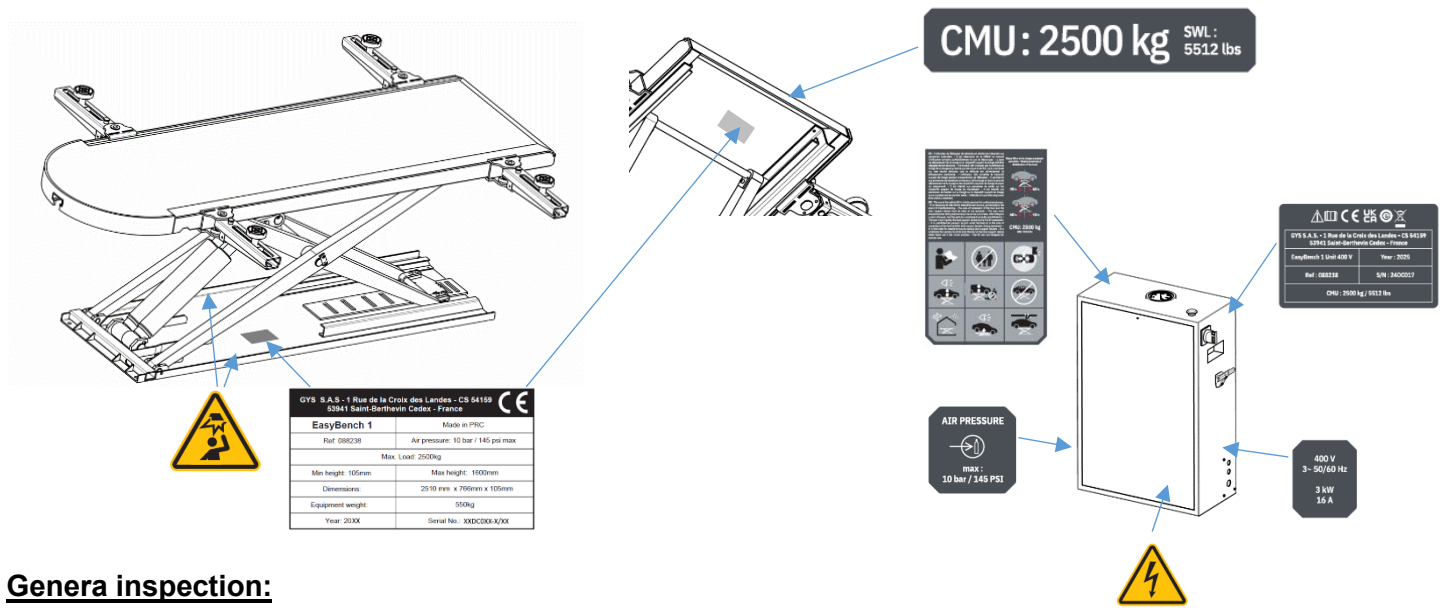
Clean each sticker to ensure they are visible and legible.

3 – Visually inspect the safety mechanism to ensure there is no abnormal damage.



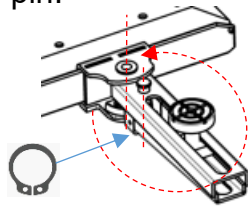
**Presence of all safety stickers:**

Check that each sticker is present on the lift and on the hydraulic unit. If any sticker is significantly damaged, replace it.

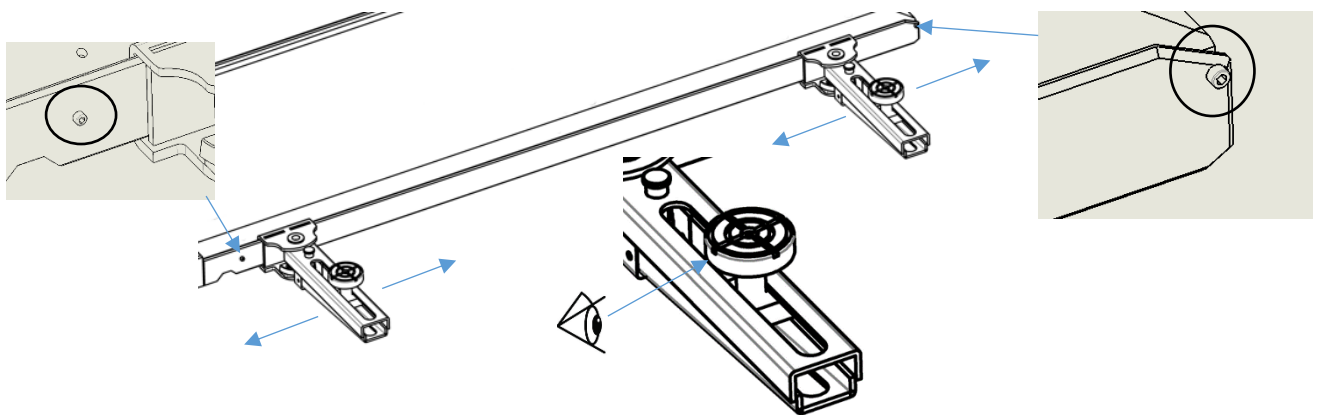


**General inspection:**

- a- Visual inspection of the lift structure (general condition)
- b- If any signs of corrosion are present, treat immediately.
- c- Check the proper operation of the indexing system on each arm and ensure the circlip is present on the movable pin.



- d- Check that the arm deploys correctly and slides smoothly along the side of the table.
- e- Inspect the height-adjustable pads. Check the condition and presence of the rubber pad. Ensure the pad stop is in place to prevent the pad from coming out of its housing.
- f- Verify that all four M8 screws serving as mechanical stops are present.



- g- Check that the 4 anchoring nuts are not loose and that there are no cracks around them.
- h- Check the tightness of the screws on the pneumatic cylinder of the mechanical safety and the screws securing the movable part.
- i- Inspect the condition of the cylinders (signs of oxidation, oil leaks, etc.)
- j- Inspect the condition of the hydraulic hose along the cable routing (no deformation of the cable path, no signs of oil leaks, not pinched by the lift, etc.).
- k- Check the condition of the remote control and its cord.
- l- Check the condition of the position sensor and its cable.
- m- Inspect the overall condition of the hydraulic unit, inside and out (always switch the isolator to “OFF” and disconnect the power cord before inspection)
- n- Ensure that no screws are loose (on the table or in the hydraulic unit) .
- o- Check for any signs of hydraulic fluid leaks in the hydraulic unit.

### Lubrication:

Lubricate the cylinder heads using the built-in grease fittings (every 6 months / grease type MULTIS COMPLEX HV 2 – blue color).

Lubricate all moving and friction parts (grease type MULTIS COMPLEX HV 2 – blue color)..

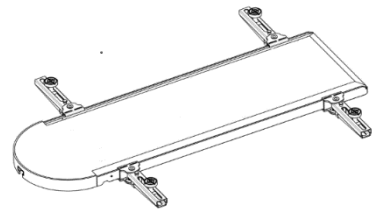
### Check Oil Level:



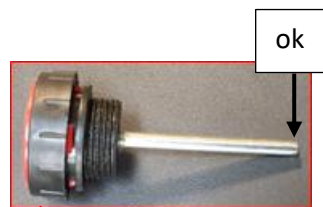
Wear chemical-resistant nitrile gloves, appropriate clothing, and safety glasses when topping up the oil.



Lower the lift to its lowest position. It is important to follow this step before checking the oil level.



- 1 - Turn the isolator switch to “OFF” and then disconnect the power cable from the hydraulic unit..
- 2 - Open the cover.
- 3 - Inspect the interior to ensure there are no traces of oil.
- 4 - Unscrew the oil reservoir filler cap. The level is correct if it slightly exceeds the tip of the dipstick. Top up if necessary with hydraulic oil with a viscosity grade of 32 CST (reference 062160 / type IKV-TRIBOLINE HLQ HM-32).



#### List of oils from the 3 major manufacturers:

- TOTAL: AZOLLA ZS 32
- ELF: ELFOLNA DS 32
- MOBIL: MOBIL NUTO H 32



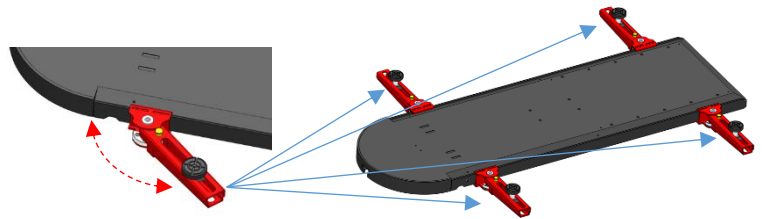
Use a properly sized funnel and monitor the level while filling. **Pour slowly.**

We recommend replacing the oil every year (especially important during the first year), as the oil accumulates particles. Preventive replacement helps to prolong the service life of the hydraulic unit.

Always use high-performance hydraulic oil with a viscosity of 32 CST (reference 062160 / type IKV-TRIBOLINE HLQ HM-32 or an equivalent oil from another brand).

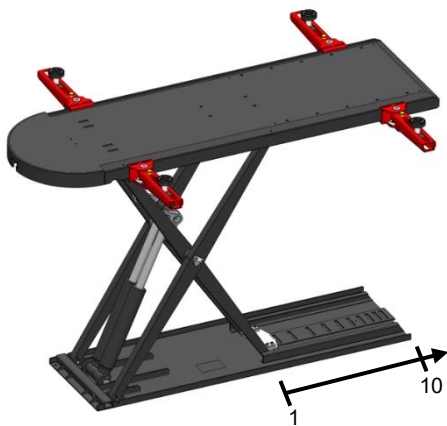
**Check Arm Locking System on the Floor:**

Check that when the platform is on the floor, all 4 arms are completely free.  
Lubricate only the shaft of the mechanism if necessary.

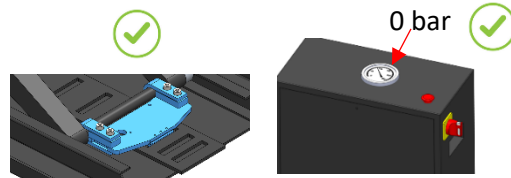


**No-Load Test:**

Perform a no-load lift test by raising the platform to the top and then lowering it, testing all 10 mechanical locking positions.



Test all 10 positions and check that the hydraulic pressure is at 0 bar each time.



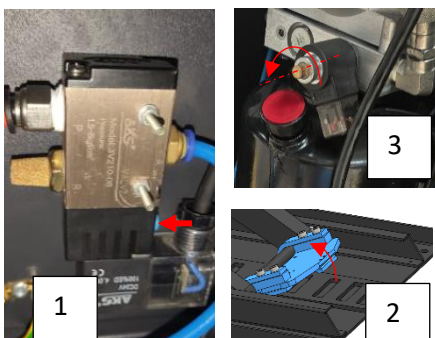
**Safety :**

Check that the platform stops automatically at a height of 220 mm from the floor to prevent the risk of foot crushing (and especially to allow installation of the table's pulling bracket).  
If the height deviates significantly from 220 mm (0, +10 mm), adjust the position sensor to achieve the correct height..



Ensure that the buzzer is audible each time the lift is activated in the lowering position.  
Note that a pause occurs before descending to prevent foot injury.

**Descente de secours : Test à faire sans charge**

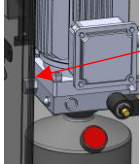
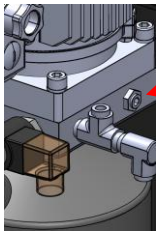


- **Check that the mechanical safety is not locked.**
- Hold down the manual release of the pneumatic solenoid to lift the mechanical safety.
- Unscrew the brass knurled nut and verify that the lift lowers properly.
- Once the test is successful, retighten the nut.

## 14 - Troubleshooting: Faults – Causes – Remedies

The table below lists the common anomalies that may be observed during use of the lift. If the issue encountered is not listed in the table, stop using the lift immediately and contact your dealer or the manufacturer for further instructions. Place the product out of service (follow the OUT OF SERVICE procedure described in the following section).

FAULTS	CAUSES	SOLUTIONS
The motor runs but the lift does not rise.	Incorrect phase connection to the electrical supply.	Interchange two phases in the lift power supply to reverse the motor rotation.
The lift does not lower.	The mechanical safety device remains engaged.  The hydraulic solenoid valve is clogged or the coil is faulty.	The air pressure is insufficient to lift the locking device (optimal pressure between 7 and 8 bar); an air hose may be disconnected, pinched or damaged, or the air solenoid valve may be faulty → repair or replace as required.  Clean the filter if necessary or replace the coil. Ensure that the system pressure is at 0 bar before carrying out any work, and ideally place the lift in the fully lowered (ground) position.
The lift does not respond to any command and no audible signal is emitted.	The fuses are blown. The power supply is faulty.	Replace the fuses. Replace the power supply.
Oil leakage.	Loose hydraulic fitting. Defective seal. Damaged hydraulic hose.	Tighten the fitting. Replace the hose or the seal.
The lift does not stop automatically during descent at a height of 22 cm from the ground (0 / +10 mm).	The position sensor is misadjusted (check tightening of the mounting screws) or the sensor is faulty. The position sensor is disconnected.	Adjust the position sensor if it is not faulty. Replace the sensor if it is faulty. Check the cable up to the control cabinet and verify the connection.
The lift is stuck in the maximum raised position and does not lower.	<b>The safety (parachute) valves were activated due to back pressure when the table reached the upper mechanical stop</b> <i>(generally a small noise can be heard indicating valve closure — a “click” from the hydraulic cylinders).</i>	<b>Wait 5 seconds and press the “up” button on the remote control for half a second. This will unlock the lift and allow it to lower.</b>  <b>If the table remains stuck, wait another 5 seconds</b> (the pressure should rise from 0 bar to approximately 100 bar). <b>Then press “up” followed by “down” again.</b> If this procedure is followed correctly, it should allow the table to descend by opening the safety (parachute) valves.  <b>If the problem persists, contact GYS technical support.</b>  <b>It is recommended to never raise the table to the maximum height while forcing the hydraulic unit to</b>

		<b>reach 230 bar</b> (pressure visible on the hydraulic unit control panel).
The lift rises and then stops while the motor continues to run.	<p>Insufficient oil level.</p> <p>Load too heavy.</p> <p>Hydraulic pressure limiter misadjusted</p>	<p>Check and fill the oil level.</p> <p>Check the load (&lt; 2.5 t).</p> <p>Check the maximum hydraulic pressure: 230 bar.</p> <div style="display: flex; align-items: center;">  <div style="border: 1px solid black; padding: 5px; margin-left: 10px;"> <p>The pressure adjustment is located here, behind the protective cover. Tighten to increase the maximum pressure, and loosen to decrease it.</p> </div> </div> <p><b>This operation must only be performed by a qualified / authorized person</b></p>
The lift descends too quickly	The speed setting is too high	<div style="display: flex; align-items: center;">  <div style="border: 1px solid black; padding: 5px; margin-left: 10px;"> <p>The speed adjustment is located here. Loosen the nut and tighten the screw to reduce the lift speed → the maximum speed must not exceed 0.15 m/s.</p> </div> </div> <p>When the table is at its maximum height (1.6 m), measure the descent time until the platform reaches approximately 22–25 cm from the ground. <b>The time should be greater than 12 seconds.</b></p>

**Restart Procedure:**

After the lift has experienced a fault, incident, or has been placed out of service, check before restarting that the fuse indicators in the electrical panel are not lit (if lit, this indicates a problem on the circuit or that the fuse is blown). If all fuse indicators are off, you may restart the lift. Perform an unloaded up-and-down cycle, verifying that the lift operates correctly. In case of malfunction or anomaly, contact the authorized distributor's technical service.

## 15 – OUT OF SERVICE

---

Any product that appears to be damaged in any way (broken, bent, cracked, or otherwise impaired), that does not operate normally, or that is missing parts must be immediately taken out of service. Switch the disconnect to the “**OFF**” position and lock it to prevent use by anyone. Unplug the power cord. The out-of-service procedure also applies after an incident or accident in order to investigate the issue and safely reuse the product.

## 16 – DISPOSAL

---

This lift must be disposed of in accordance with the current environmental regulations and disposal requirements of the country in which it is located..

## 17 – TERMS OF WARRANTY

---

The warranty covers any manufacturing defect or fault for 2 years from the date of installation (parts and labor). The warranty does not cover damage caused by misuse, falls, disassembly, or any other damage resulting from transport. The warranty does not cover normal wear of parts if maintenance has not been properly performed.

Only spare parts from the manufacturer must be used for any repair. The lift’s maximum load specifications are indicated on the lift. The user must not remove, soil, or damage this label. The warranty will be automatically voided if the label is tampered with. Contact the dealer or manufacturer to obtain a replacement label if necessary

In the event of a breakdown, contact your distributor, providing:

- The invoice and a copy of the installation report with the date.
- A mandatory explanatory note describing the breakdown.
- A copy of the “regular safety inspections” if the product is more than one year old.

## 18 – OIL INFORMATION AND WARNINGS

---

### Disposal of used oil:

Do not dispose of used oil in drains, gutters, or waterways..

Store it in designated containers, which should be handed over to specialized disposal companies.

### Oil Losses and Leaks:

Cover any oil spilled on the floor with soil, sand, or another absorbent material. The contaminated area must be degreased using appropriate products. Cleaning residues must be disposed of in accordance with applicable regulations.

## 19 – FIRE-FIGHTING EQUIPMENT

---

To select the most appropriate fire extinguisher, refer to the table below :

Matériaux secs		Liquides inflammables		Appareillages électriques		<i>OUI* : utilisables en l'absence de moyens de lutte plus efficaces ou pour les incendies de faible importance.</i>
Eau pulvérisée	<b>OUI</b>	Mousse	<b>OUI</b>	Poudres	<b>OUI</b>	
Mousse	<b>OUI</b>	Poudres	<b>OUI</b>	CO2	<b>OUI</b>	
Poudres	OUI*	CO2	<b>OUI</b>			
CO2	OUI*					

The information in this table is of a general nature and is intended as a broad guide for users. The specific usage possibilities of each type of extinguisher should be confirmed with the manufacturer.

## 20 – INSTALLATION REPORT

Model : EASYBENCH1

Series No. \_\_\_\_\_

Date installation \_\_\_\_\_

Inspection to be carried out by the authorized distributor's technical service in the presence of the user		Manual Chapter(s)	Manual Chapter(s)	Check Performed (tick box)	Value	Comments
1	Check the presence of the technical plates.	1-13	P2-p16	<input type="checkbox"/>		
2	Check the presence of all stickers, including the 2.5 t rated load (CMU) sticker.	13	P16	<input type="checkbox"/>		
3	Record the inlet air pressure	7	P8	<input type="checkbox"/>		
4	Check that there are no air leaks at the connections.	7	P8	<input type="checkbox"/>		
5	Record the amperage of the electrical protection.	7	P9	<input type="checkbox"/>		
6	Check the oil level.	13	P17	<input type="checkbox"/>		
7	Record the maximum hydraulic circuit pressure (in bar).	1-23-25	P2-p28-p30	<input type="checkbox"/>		
8	Check the hydraulic circuit for leaks.	13	P17	<input type="checkbox"/>		
9	Check the operation of all controls.	13	P16	<input type="checkbox"/>		
10	Check the locking operation of each load-support arm	13	P16àp18	<input type="checkbox"/>		
11	Record the height (in mm) at which the top of the platform stops during descent → value should be between 220 mm and 230 mm.	13	P18	<input type="checkbox"/>		
12	Check the operation of the audible warning device.	13	P18	<input type="checkbox"/>		
13	Check the operation of the emergency descent.	13	P18	<input type="checkbox"/>		
14	Record, in Nm, the tightening torque of the anchor studs and note the commercial designation if different from the supplied anchor bolts.	7	P10	<input type="checkbox"/>		
15	Ensure the installation area is clean.	6-7	P6-p7	<input type="checkbox"/>		
16	Provide training on lift operation and present the user manual.	9-10-26	P10 à p13 P31-p32	<input type="checkbox"/>		
17	Provide training on maintenance	11-12-13-14-15-16-17-19-20-21-22-23-24	P14 àp21 P23 à p30	<input type="checkbox"/>		

Any remarks should be recorded on the technician's service report – the user must enter them in the Safety Log.

\_\_\_\_\_ Authorized Distributor \_\_\_\_\_

Company name, address, phone number (or stamp)

Technician Name	Technician Signature
-----------------	----------------------

\_\_\_\_\_ Client \_\_\_\_\_

Company name, address, phone number (or stamp)

Names of Trained Personnel	Signature
_____	_____
_____	_____
_____	_____

## 21 – PERIODIC MAINTENANCE REPORT

Model : EASYBENCH1

Series No. \_\_\_\_\_

Inspection to be performed by the authorized distributor's technical service		Manual Chapter	Year No		Year No		Year No		Year No		Year No	
			Value	Check Performed	Value	Check Performed	Value	Check Performed	Value	Check Performed	Value	Check Performed
1	Check the condition of the different parts of the lift: General inspection	13	<input type="checkbox"/>	<input type="checkbox"/>	<input type="checkbox"/>	<input type="checkbox"/>	<input type="checkbox"/>	<input type="checkbox"/>	<input type="checkbox"/>	<input type="checkbox"/>	<input type="checkbox"/>	<input type="checkbox"/>
2	Check the presence of the technical plates.	1	<input type="checkbox"/>	<input type="checkbox"/>	<input type="checkbox"/>	<input type="checkbox"/>	<input type="checkbox"/>	<input type="checkbox"/>	<input type="checkbox"/>	<input type="checkbox"/>	<input type="checkbox"/>	<input type="checkbox"/>
3	Check the presence of all stickers, including the 2.5 t rated load (CMU) sticker.	13	<input type="checkbox"/>	<input type="checkbox"/>	<input type="checkbox"/>	<input type="checkbox"/>	<input type="checkbox"/>	<input type="checkbox"/>	<input type="checkbox"/>	<input type="checkbox"/>	<input type="checkbox"/>	<input type="checkbox"/>
4	Check the oil level.	7	<input type="checkbox"/>	<input type="checkbox"/>	<input type="checkbox"/>	<input type="checkbox"/>	<input type="checkbox"/>	<input type="checkbox"/>	<input type="checkbox"/>	<input type="checkbox"/>	<input type="checkbox"/>	<input type="checkbox"/>
5	<b>Check the presence of all screws and circlips</b> (mechanical safety, sensor, etc.).	1-25	<input type="checkbox"/>	<input type="checkbox"/>	<input type="checkbox"/>	<input type="checkbox"/>	<input type="checkbox"/>	<input type="checkbox"/>	<input type="checkbox"/>	<input type="checkbox"/>	<input type="checkbox"/>	<input type="checkbox"/>
6	Check the condition and routing of the hydraulic hose, pneumatic hose, and electrical cable.	7	<input type="checkbox"/>	<input type="checkbox"/>	<input type="checkbox"/>	<input type="checkbox"/>	<input type="checkbox"/>	<input type="checkbox"/>	<input type="checkbox"/>	<input type="checkbox"/>	<input type="checkbox"/>	<input type="checkbox"/>
7	Check the hydraulic circuit for leaks.	13	<input type="checkbox"/>	<input type="checkbox"/>	<input type="checkbox"/>	<input type="checkbox"/>	<input type="checkbox"/>	<input type="checkbox"/>	<input type="checkbox"/>	<input type="checkbox"/>	<input type="checkbox"/>	<input type="checkbox"/>
8	Check the locking operation of each load-support arm	13	<input type="checkbox"/>	<input type="checkbox"/>	<input type="checkbox"/>	<input type="checkbox"/>	<input type="checkbox"/>	<input type="checkbox"/>	<input type="checkbox"/>	<input type="checkbox"/>	<input type="checkbox"/>	<input type="checkbox"/>
9	Check the condition and adjustment of the rubber pads.	13	<input type="checkbox"/>	<input type="checkbox"/>	<input type="checkbox"/>	<input type="checkbox"/>	<input type="checkbox"/>	<input type="checkbox"/>	<input type="checkbox"/>	<input type="checkbox"/>	<input type="checkbox"/>	<input type="checkbox"/>
10	Record, in Nm, the tightening torque of the anchor studs.	7	<input type="checkbox"/>	<input type="checkbox"/>	<input type="checkbox"/>	<input type="checkbox"/>	<input type="checkbox"/>	<input type="checkbox"/>	<input type="checkbox"/>	<input type="checkbox"/>	<input type="checkbox"/>	<input type="checkbox"/>
11	Check the operation of all controls.	13	<input type="checkbox"/>	<input type="checkbox"/>	<input type="checkbox"/>	<input type="checkbox"/>	<input type="checkbox"/>	<input type="checkbox"/>	<input type="checkbox"/>	<input type="checkbox"/>	<input type="checkbox"/>	<input type="checkbox"/>
12	Record the height (in mm) at which the top of the platform stops during descent.	13	<input type="checkbox"/>	<input type="checkbox"/>	<input type="checkbox"/>	<input type="checkbox"/>	<input type="checkbox"/>	<input type="checkbox"/>	<input type="checkbox"/>	<input type="checkbox"/>	<input type="checkbox"/>	<input type="checkbox"/>
13	Check the operation of the audible warning device.	13	<input type="checkbox"/>	<input type="checkbox"/>	<input type="checkbox"/>	<input type="checkbox"/>	<input type="checkbox"/>	<input type="checkbox"/>	<input type="checkbox"/>	<input type="checkbox"/>	<input type="checkbox"/>	<input type="checkbox"/>
14	Check the operation of the emergency descent.	13	<input type="checkbox"/>	<input type="checkbox"/>	<input type="checkbox"/>	<input type="checkbox"/>	<input type="checkbox"/>	<input type="checkbox"/>	<input type="checkbox"/>	<input type="checkbox"/>	<input type="checkbox"/>	<input type="checkbox"/>
15	Perform a full-course test with the 2.5 t rated load (CMU).	25	<input type="checkbox"/>	<input type="checkbox"/>	<input type="checkbox"/>	<input type="checkbox"/>	<input type="checkbox"/>	<input type="checkbox"/>	<input type="checkbox"/>	<input type="checkbox"/>	<input type="checkbox"/>	<input type="checkbox"/>
16	Check the presence and storage of the user manual.		<input type="checkbox"/>	<input type="checkbox"/>	<input type="checkbox"/>	<input type="checkbox"/>	<input type="checkbox"/>	<input type="checkbox"/>	<input type="checkbox"/>	<input type="checkbox"/>	<input type="checkbox"/>	<input type="checkbox"/>

Any remarks should be recorded on the technician's service report – the user must enter them in the Safety Log..

*(Print this blank page to perform inspections over a 5-year period.)*

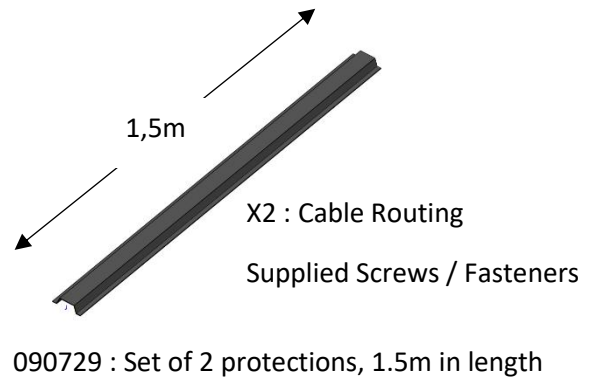
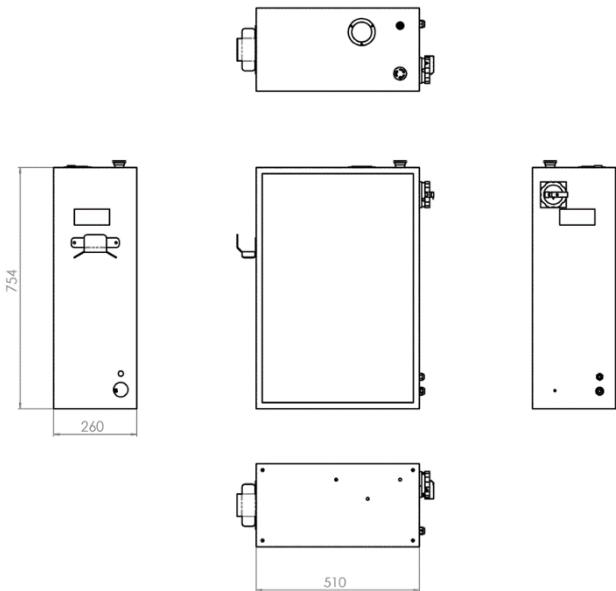
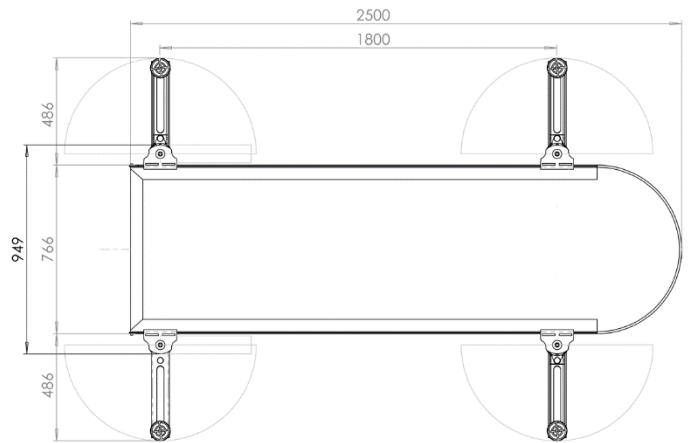
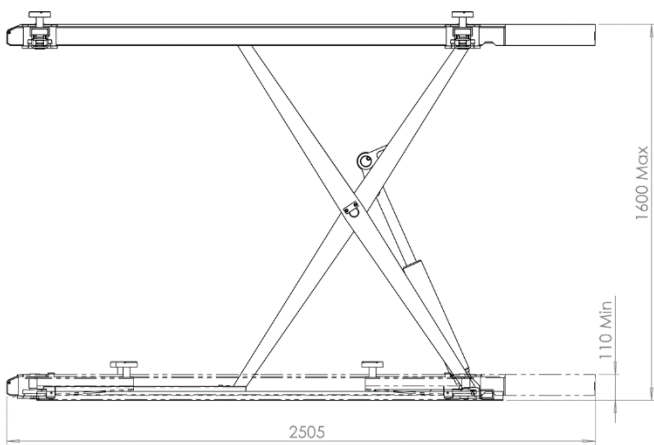
## 22 – MAINTENANCE LOG

Archiving of Inspections: Complete this document to certify the periodic checks.

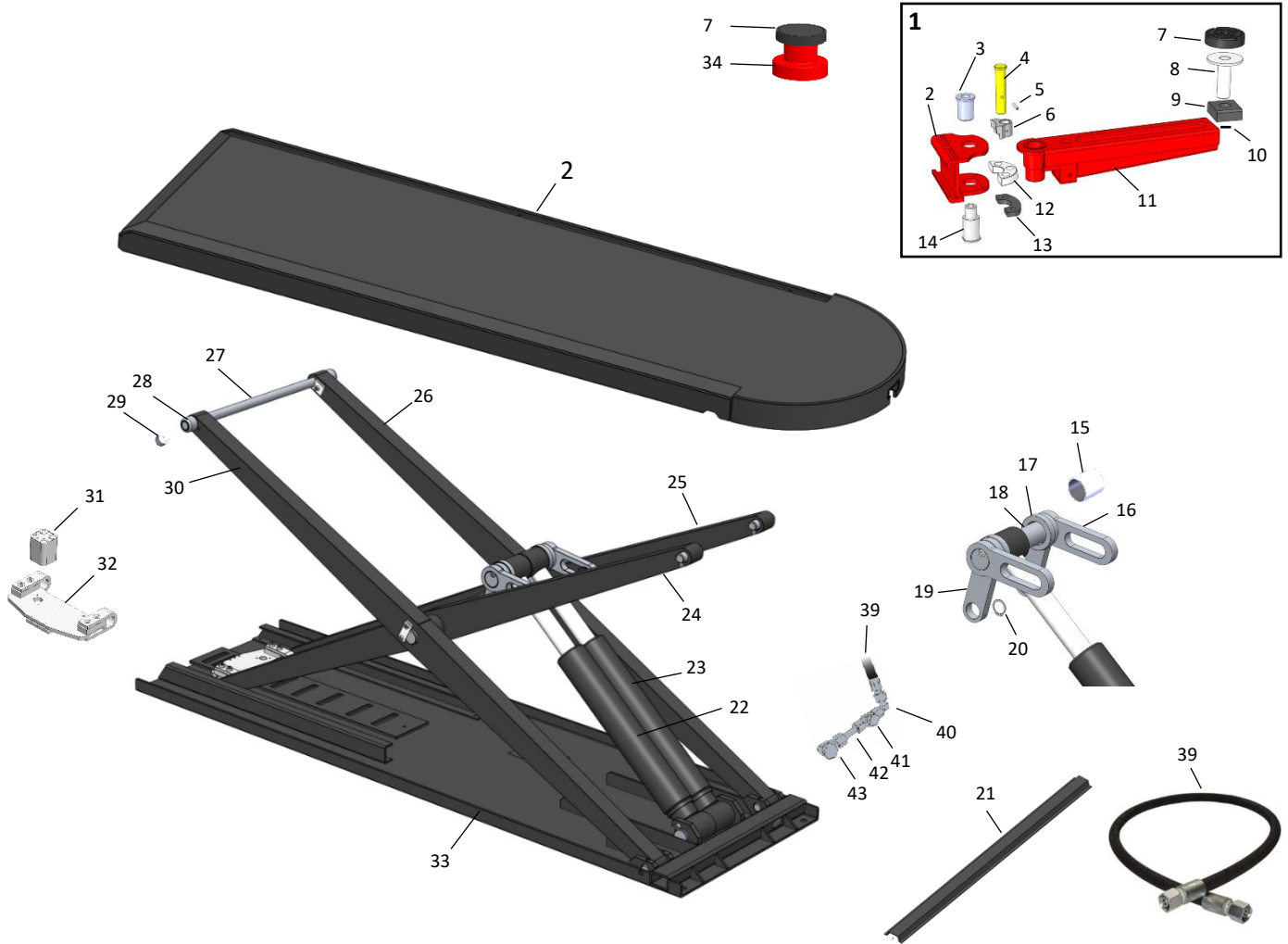
	DATE	OPERATION	COMMENTAIRE
ANNEE 1		Installation	
		Epreuve reglementaires	
		Mise en service	
		Vérification générale	
ANNEE 2			
		Vérification générale	
ANNEE 3			
		Vérification générale	
ANNEE 4			
		Vérification générale	
ANNEE 5			
		Vérification générale	
ANNEE 6			
		Vérification générale	
ANNEE 7			
		Vérification générale	
ANNEE 8			
		Vérification générale	
ANNEE 9			
		Vérification générale	
ANNEE 10			
		Vérification générale	



## 23 - DIMENSIONS

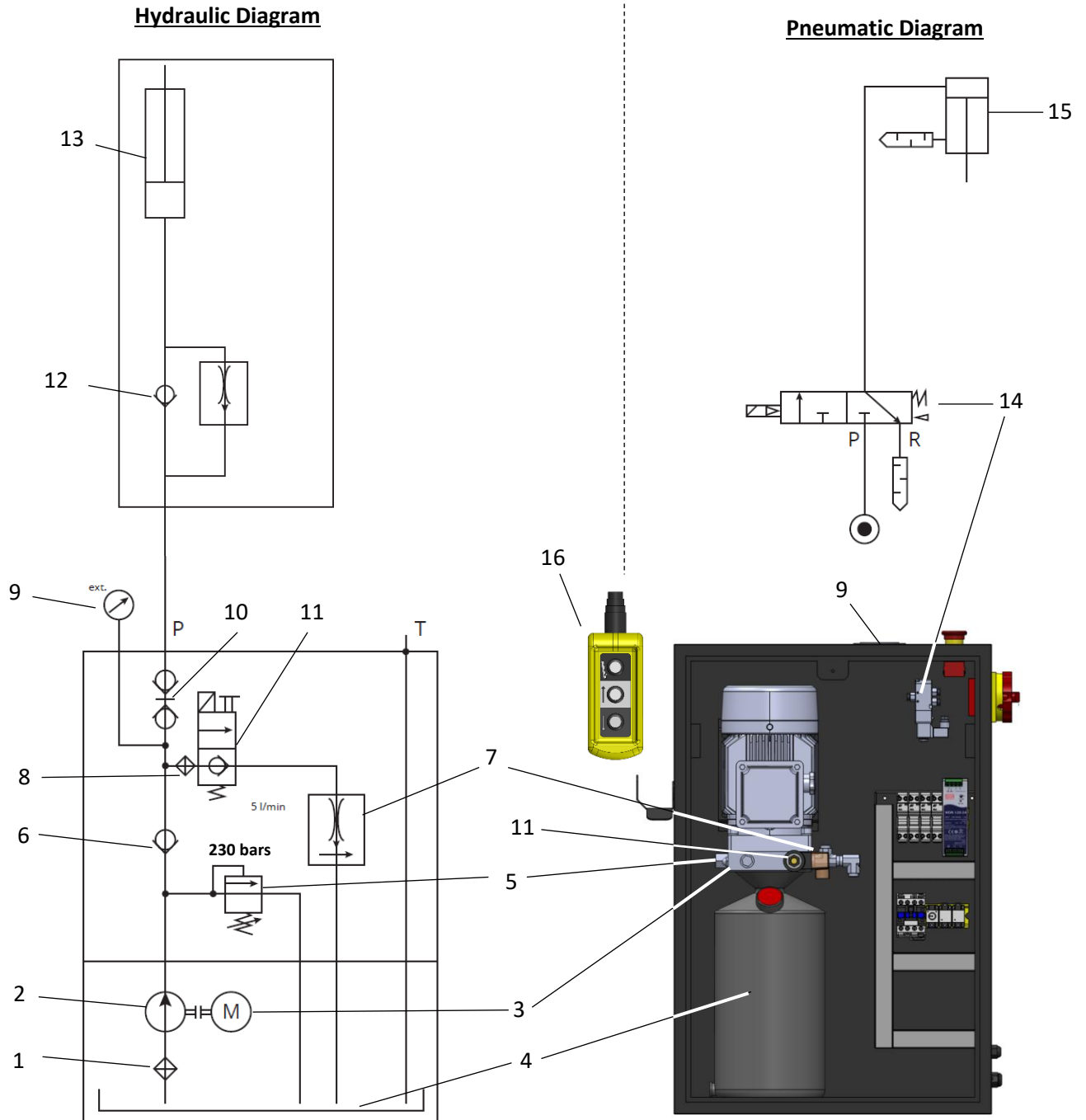


## 24 – SPARE PARTS



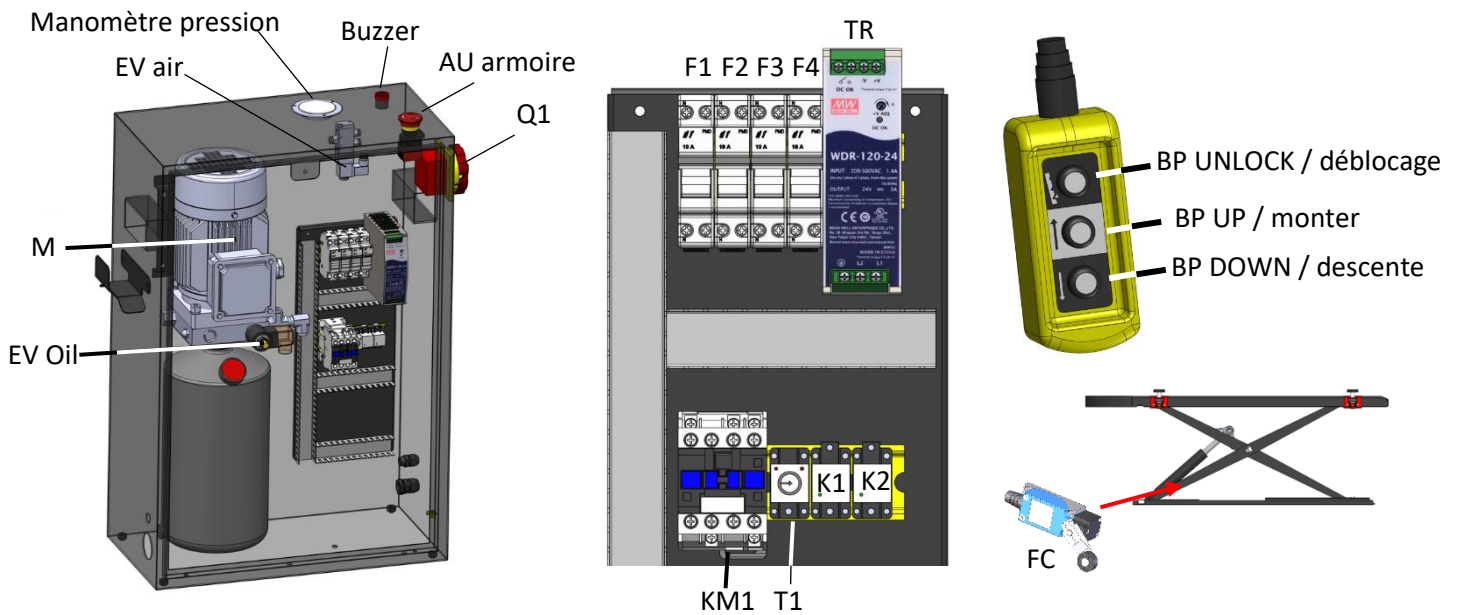
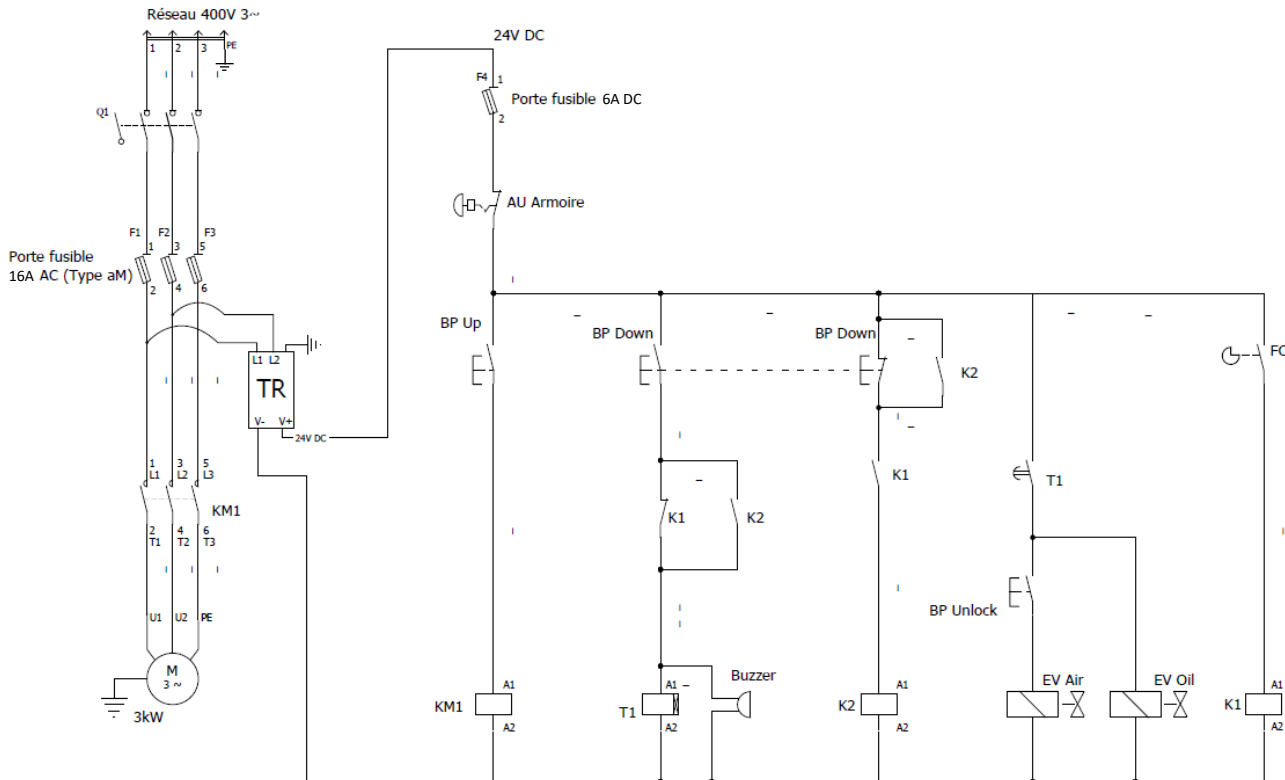
No.	Description	No.	Description
1	Complete Assembled Arm	23	Right Cylinder
2	Steel Arm Support	24	Lower Left Scissor
3	Upper Steel Arm Shaft	25	Lower Right Scissor
4	Movable Steel Shaft	26	Outer Right Scissor
5	Pin	27	Outer Scissor Shaft
6	Upper Movable Latch	28	Outer Scissor Roller
7	Rubber Pad	29	Upper Scissor Roller Bushing
8	Pad Support	30	Outer Left Scissor
9	Pad Fastening	31	Complete Mechanical Safety Cylinder
10	Pad Stop Pin	32	Mechanical Safety Device
11	Welded Steel Arm	33	Lower Frame
12	Fixed Lower Latch	34	60 mm Riser
13	Fixed Latch Riser	35	Position Sensor
14	Lower Arm Steel Shaft	36	Complete Position Sensor Cable
15	Cylinder Bushing	37	5 m Hydraulic Hose
16	Fixed Solid Link	38	Mechanical Safety Air Hose
17	Pressure Roller	39	Hydraulic Hose (7 m length)
18	Upper Cylinder Steel Shaft	40	90° Elbow Fitting
19	Fixed Solid Link	41	Double Fitting
20	Upper Cylinder Shaft Circlip	42	Ø10 Tube
21	1.5 m Flexible Protection, Steel 1.5 mm thick	43	Straight Fitting
22	Left Cylinder		

# 25 – PNEUMATIC AND HYDRAULIC CIRCUIT



No.	Description	No.	Description
1	Filter	9	Pressure gauge
2	Hydraulic pump	10	Quick-connect couplings
3	Electric motor	11	Solenoid valve for lowering (electric & manual control)
4	Oil tank	12	Parachute safety valve
5	Pressure relief valve (230 bar)	13	Hydraulic cylinder
6	Check valve	14	24V pneumatic solenoid valve (mechanical safety activation)
7	Flow control valve	15	Pneumatic cylinder
8	Filter	16	Remote control

## 26 – ELECTRIC CIRCUIT






















No.	Description	No.	Description
EV Oil	Solenoid valve for lowering (electric and manual control) – part 11	TR	24 V Power Supply
M	Electric motor – part 3	KM1	400 V Three-Phase Contactor
EV Air	24V pneumatic solenoid valve – part 11	T1	Timer / Time Delay
Buzzer	24V buzzer	K1	Relay 1
AU armoire	Emergency stop button	K2	Relay 2
Q1	Three-phase isolator switch	FC	Position Sensor
F1	Fuse holder – phase 1	BP DOWN	Hydraulic Solenoid Valve Open Button
F2	Fuse holder – phase 2	BP UP	Motor Power Button
F3	Fuse holder – phase 3	BP UNLOCK	Safety Unlock Button
F4	Control circuit fuse holder		

## 27 – TECHNICAL SPECIFICATIONS

Control Unit	Weight	50kg	110Lbs
	Motor Power	3KW	
	Supply Voltage / Hz	400V / 50hz	
	Current (A) 400 V three-phase	8A	
	Control Voltage	24V	
	Noise Level	< 70 dB (A)	
	Max Air Pressure	10bars	145Psi
	Max Oil Pressure	230bars	3771Psi
	Hydraulic Oil Viscosity	Classe 32-ASTM D445 ISO3448	
	Max Reservoir Capacity	7 Litres	1,85 gallons
Lift / Elevator	Weight	550 - 600kg	1212lbs - 1322lbs
	Maximum Lifting Time	50 sec	
	Lift Dimensions		
	Length	2505mm (986,22inch)	
	Platform Width (without arms)	766mm	301,6inch
	Width with Arms Folded	950mm	374inch
	Minimum Height	11cm	4,33inch
	Maximum Height	160cm	63inch
	CMU → Maximum Capacity – SWL (Safe Working Load)	2500kg	5500Lbs
	Noise Level	< 70 dB (A)	

## 28 – PICTOGRAMS

	<p>Notice Symbol</p>
<p>CMU : 2500 kg</p>	<p>The maximum safe working load (SWL) is 2500 kg</p>
	<p>Always refer to the complete user manual, particularly for troubleshooting</p>
	<p>Use of the vehicle lift is strictly limited to authorized personnel</p>
	<p>The load movement area and the load support device must be kept clear of any obstacles</p>
	<p>The user must supervise the load support device while the lift is in motion</p>
	<p>Do not allow anyone to stand in the path of the load or near the load support devices while the lift is moving.</p>
	<p>It is forbidden for anyone to climb on the load or the load support device when they are in the raised position</p>
	<p>The lift is not designed for outdoor use</p>
	<p>The user must ensure that the method of lifting the load is safe and, after a short lift, verify that the vehicle is properly and securely positioned</p>
	<p>The user must monitor that no overhead obstacles can cause damage to the vehicle</p>
	<p>Equipment complies with European Directives. The EU Declaration of Conformity is available on our website (see cover page)</p>

	<p>Equipment complies with UK requirements. The UK Declaration of Conformity is available on our website (see cover page)</p>
	<p>EAC Conformity Mark (Eurasian Economic Community)</p>
	<p>Recyclable product – subject to local recycling regulations.</p>
	<p>Warning! Read the instruction manual before use</p>
	<p>Equipment complies with Chinese requirements on the restricted use of hazardous substances in electrical and electronic products</p>
	<p>This equipment is subject to selective collection under European Directive 2012/19/EU. Do not dispose of it in household waste!</p>
	<p>Electrical Hazard</p>
	<p>Risk of Head Injury</p>



**GYS France**

Siège social / Headquarter  
1, rue de la Croix des Landes - CS 54159  
53941 Saint-berthevin Cedex  
France

[www.gys.fr](http://www.gys.fr)  
+33 2 43 01 23 60  
[service.client@gys.fr](mailto:service.client@gys.fr)

**GYS UK**

Filiale / Subsidiary  
Unit 3  
Great Central Way  
CV21 3XH - Rugby - Warwickshire  
United Kingdom

[www.gys-welding.com](http://www.gys-welding.com)  
+44 1926 338 609  
[uk@gys.fr](mailto:uk@gys.fr)

**GYS GmbH**

Filiale / Niederlassung  
Professor-Wieler-Straße 11  
52070 Aachen  
Deutschland

[www.gys-schweissen.com](http://www.gys-schweissen.com)  
+49 241 / 189-23-710  
[aachen@gys.fr](mailto:aachen@gys.fr)

**GYS Italia**

Filiale / Filiale  
Vega – Parco Scientifico Tecnologico di  
Venezia  
Via delle Industrie, 25/4  
30175 Marghera - VE  
Italia

[www.gys-welding.com](http://www.gys-welding.com)  
+39 041 53 21 565  
[italia@gys.fr](mailto:italia@gys.fr)

**GYS China**

Filiale / 子公司  
6666 Songze Road,  
Qingpu District  
201706 Shanghai  
China

[www.gys-china.com.cn](http://www.gys-china.com.cn)  
+86 6221 4461  
[contact@gys-china.com.cn](mailto:contact@gys-china.com.cn)

**GYS Iberica**

Filiale / Filial  
Avenida Pirineos 31, local 9  
28703 San Sebastian de los reyes  
España

[www.gys-welding.com](http://www.gys-welding.com)  
+34 917.409.790  
[iberica@gys.fr](mailto:iberica@gys.fr)