

ESM26 Technical Data Sheet

Introduction

The ESM26 is a purpose built stage monitor with incredible clarity and presence, especially in the all important vocal range. Incorporating two high quality 6" drivers and a 1.75" compression driver on a 100 x 100 degree horn flare. The ESM26 utilises KV2's revolutionary delay line technology for optimum output and feedback rejection. A full width bass port along the bottom of the cabinet couples with the floor to deliver bass response comparable to monitors twice its size. Under 400mm wide this small monitor takes up minimal room on stage and is ideal for visually critical applications like TV and theatre.



Features

- The ESM26 is a high quality professional stage monitor. Compact in size the ESM26 at just 374 mm wide and 340 mm high and weighing only 15 kgs delivers incredible clarity and high output that defies it's small dimensions. With a sensitivity of 98dB@1 watt the ESM26 can deliver a peak output of 126dB while retaining pristine sound reproduction
- The ESM26 incorporates KV2's unique analog delay line technology as utilised in their popular new ESD range of speakers. This circuit, incorporated into the speakers crossover network provides the monitor with perfect time alignment and phase correction, without the need for external processors and biamping. The savings this feature provides are substantial, halving amplifier costs and the need for expensive processors
- With perfect phase control inbuilt, the ESM26's rejection to feedback is superb, and absolutely minimal EQ, if any, is needed to create amazing results with this little powerhouse. The ESM26 incorporates two low inductance, long excursion high quality six inch drivers in a bass reflex cabinet with auto reset protection. A full width port along the bottom of the cabinet provides direct coupling with the floor for enhanced bass response. The new patent pending 1.75" titanium diaphragm compression driver incorporates a complex geometry phase plug for higher output, exceptionally low distortion and extended frequency response. It is connected to a 100 x 100 degree horn for wide and deep dispersion, so the performer has a good coverage regardless of movement
- Unlike many of today's stage monitor designs which use very shallow angles for aesthetic appeal, the ESM26 incorporates a steeper angle to ensure sound is directed at the performer and rear of stage, rather than up into the ceiling. Again this provides for much more practical longer throw applications in television studios or theatres while still retaining a total height of just over 300mm. The ESM26's connector panel is cleverly concealed into it's side handle to ensure an attractive, unobtrusive appearance on stage
- The simplicity and ease of use of the ESM26 is only complimented by it's extraordinary performance. Through innovative engineering with real world applications in mind, KV2 has delivered a world class stage monitor at an affordable and accessible price. Ideal for all applications where high quality stage monitoring is required

Application

Specifically designed as an extremely compact-low profile passive-vocal floor monitor

- Live performance
- Concert venues
- Portable PA
- Fixed installations

System Acoustic Performance	
Max SPL Long-term	123dB
Max SPL Peak	126dB
-3dB Response	70Hz to 16kHz
-10dB Response	54Hz to 28kHz (half space)
Recommended Power	275W
Sensitivity	98dB
Impedance	8Ω
Crossover Point	2.5kHz

High Frequency Section	
Acoustic Design	Horn Loaded
High Horn Coverage Horizontal / Vertical	100° x 100°
Throat Exit Diameter / Diaphragm Size	1" / 1.75"
Diaphragm Material	Nitride Titanium
Magnet Type	Neodymium

Low Frequency Section	
Acoustic Design	Front Loaded, Bass Reflex
Number of Drivers	2
Woofer Size / Voice Coil Diameter	6" / 1.75"
Magnet Type	Neodymium
Diaphragm Material	Epoxy Reinforced Cellulose

Speaker Input	
Speaker Input	2x Neutrik Speakon®

Features	
RMS Limiter	autoreset

Cabinet	
Cabinet Material	Baltic birch
Handles	1
Color	"Orange peeled" Matt Black or any RAL

Physical Dimensions	
Height	337.3 mm /13.28"
Width	370 mm /14.57"
Depth	454.5 mm /17.89"
Weight	15 kg

ESM26 Technical Data Sheet

Architectural Specifications

The Loudspeaker shall be a 2-way design, using SLA Technology - (Super Live Audio), and shall be driven and controlled by a dedicated matched Amplifier (ESP2000, ESP4000 or alternatively with a third party amplifier of the users choice).

The Loudspeaker enclosure shall consist of two Front loaded 6" Neodymium magnet structure Bass drivers and one 1" Nitride Neodymium Titanium Compression driver mounted to a low compression horn assembly.

The cabinet enclosure shall be made from re-enforced Baltic Birch Ply, with toughened impact and wear resistant paint finish.

The Loudspeaker components shall be protected by an acoustically transparent rigid metal grill supported by absorbent rubber seals.

An internal Acoustic fabric shall be incorporated to protect the compression driver from fluid spillage damage.

The Enclosure shall have one ergonomically designed recessed handle on the side panel, which will incorporate a double input/output Speakon locking connector and one M10 fixing point.

The Enclosure shall incorporate one M10 fixing point.

The Enclosure will be fitted with four Ergonomic designed feet on the base panel to allow easy movement.

The Loudspeaker shall have a maximum long term pressure level of 123dB, a total peak power handling capacity of 275W with a nominal Horizontal dispersion of 100 degrees and a Vertical of 100 degrees and have a measured on axis frequency response of 55Hz to 22KHz (-3dB).

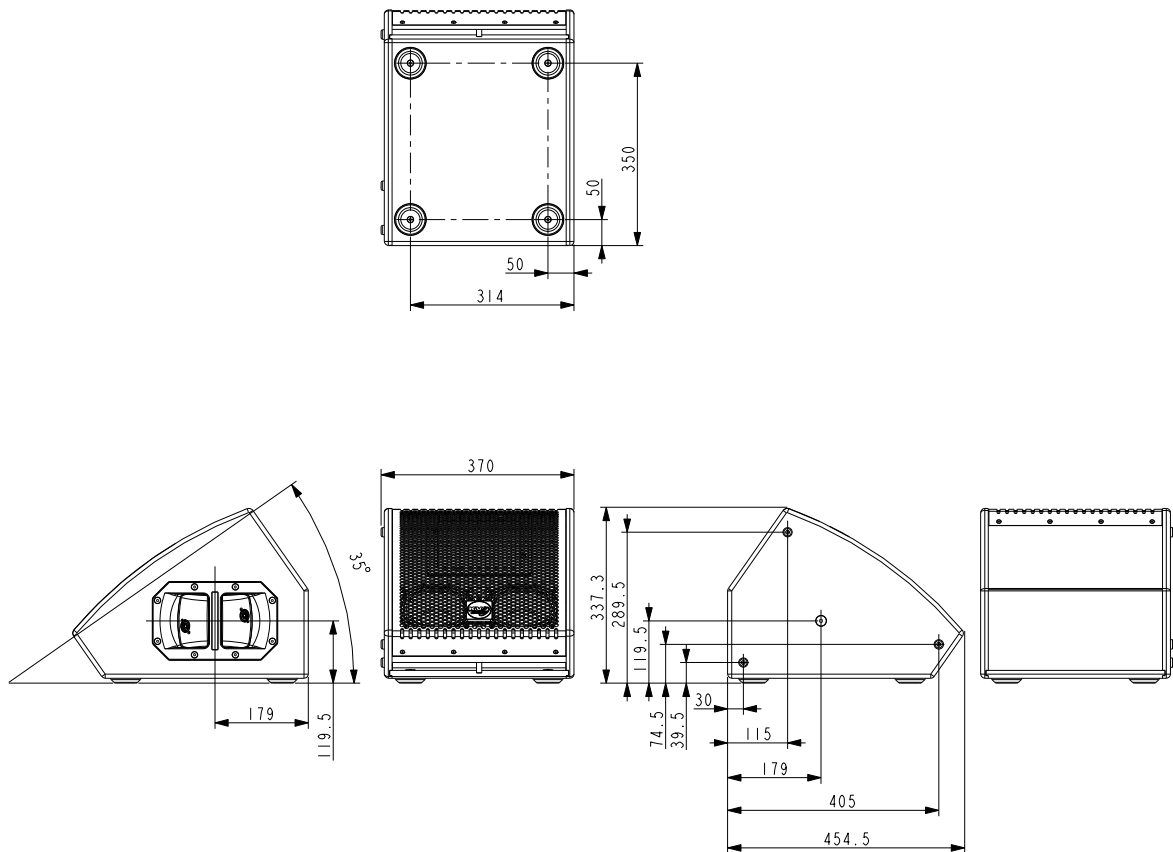
The Enclosure dimensions shall be: 337.3 mm /13.28" x 370 mm /14.57" x 454.5 mm /17.89"

The Enclosure shall not exceed a weight of 15 kg /34lbs.

The Loudspeaker shall be the KV2 Audio ESM26.

The dedicated Amplifier shall be the KV2 Audio ESP2000/4000 – (Or alternative third party amplifier).

Dimensional Drawings



The future of sound. Made perfectly clear.



KV2 Audio International, Nádražní 936, Milevsko 399 01, Czech Republic
Tel.: +420 383 809 320
Email: info@kv2audio.com | Web: www.kv2audio.com