

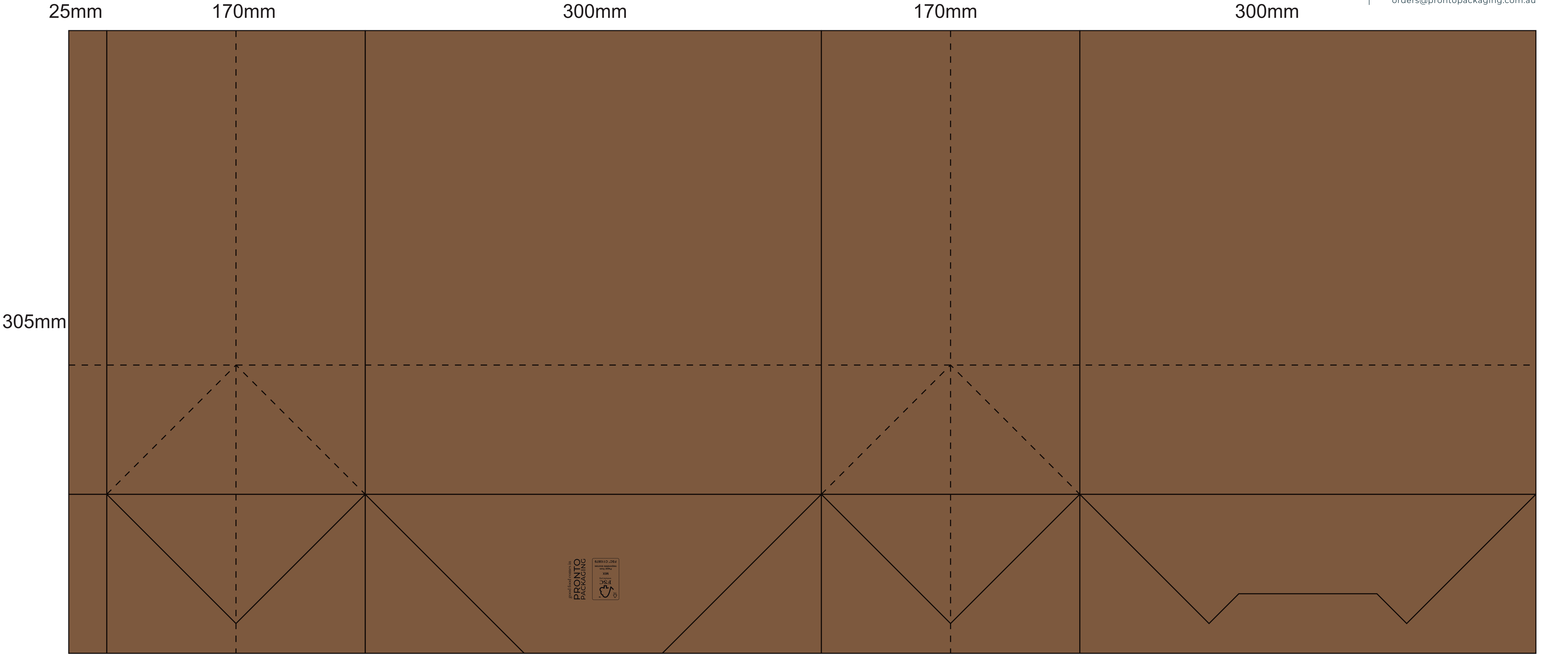
FSC Paper Large Bag



1289 Kingsford Smith Drive,
Pinkenba, QLD 4008
Brisbane Australia

Phone: 07 3359 1112
Mobile: 0490 866 885

orders@prontopackaging.com.au



<div><div>COLOUR</div><div>ARTWORK CAN BE PRINTED IN EITHER UNCOATED PANTONE (PREFERRED) OR CMYK COLOURS. THERE IS A FOUR COLOUR LIMIT WHEN PRINTING IN UNCOATED PANTONES. PLEASE CONSIDER THE APPEARANCE OF COLOURS ON THE FINAL PRINT WHEN PRODUCING KRAFT PAPER BAGS. METALIC AND FLUORESCENT COLOURS CANNOT BE USED.</div></div>		<div><div>DESIGN NOTES</div><div><div><div><input type="checkbox"/> Please be sure artwork is placed within template accorgingly</div><div><input type="checkbox"/> Care should be taken ensuring logos and design elements are proportionally the same across other sized products as required</div><div><input type="checkbox"/> All graphics must be vector and not as bitmap imagery</div></div><div><div><input type="checkbox"/> Line work must be 0.5 point of greater</div><div><input type="checkbox"/> Text must be 5 point or larger</div><div><input type="checkbox"/> Adobe Illustrator is our preferred software for box artwork</div><div><input type="checkbox"/> Convert all text to outlines and embed all graphics</div></div><div><div><input type="checkbox"/> All images, graphics and fonts provided in artwork/or provided to Pronto for artwork must comply with copyright and be the property of the client</div></div></div></div>			
<div><div><div><div></div><div>PRONTO</div><div>PACKAGING</div></div></div></div>		<div><div>Size</div><div>Large</div></div>	<div><div>Paper Colour</div><div>White Paper</div></div>	<div><div>Handle Type</div><div>Twisted</div></div>	<div><div><div><div>DETAILS</div><div><div>Company/Customer:</div><div>Position Title:</div><div>Art Scale: 100%</div><div>Date:</div><div>Graphic Designer:</div></div></div><div><div>COLOURS</div><div><div><div></div><div>PMS</div></div><div><div></div><div>PMS</div></div><div><div></div><div>PMS</div></div><div><div></div><div>PMS</div></div></div><div><div>PLEASE READ AND CHECK CAREFULLY</div><div><div>Please check this computer proof carefully before signing. Your signature is the approval to proceed to the plate making stage and signifies your acceptance of the preparation costs quoted. If this proof is correct as to copy, spelling, layout, barcodes and colour, please sign the proof. Whilst preparing this artwork and proof, it is understood that we accept no responsibility for any errors overlooked in the customers own, final proof reading.</div><div>PLEASE NOTE: The client must provide their pantone colours. The colours of the finished product will vary from this proof as the ink and paper used to generate this art work is different to that of a cardboard carton. Due to this the PMS colours quoted may not be a direct representation of the Pantone Colour Book.</div></div><div><div>SIGNATURE</div><div>DATE</div></div></div></div></div></div>