

## CROSS LINE RELIEF / ANTI-CAVITATION 60LPM

INLET PRESSURE 210 BAR (3087 PSI) MAX

PRESSURE RANGE: 3.5 - 204 BAR (50-3000PSI)

SET BY CLIENT

RATED FLOW: 60 L/MIN NOMINAL

WEIGHT 1.5KGS APPROX.

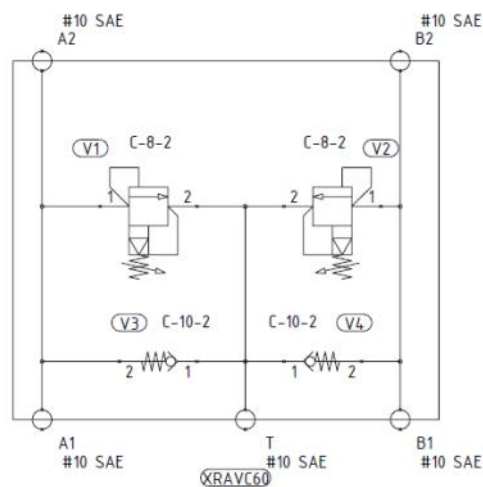
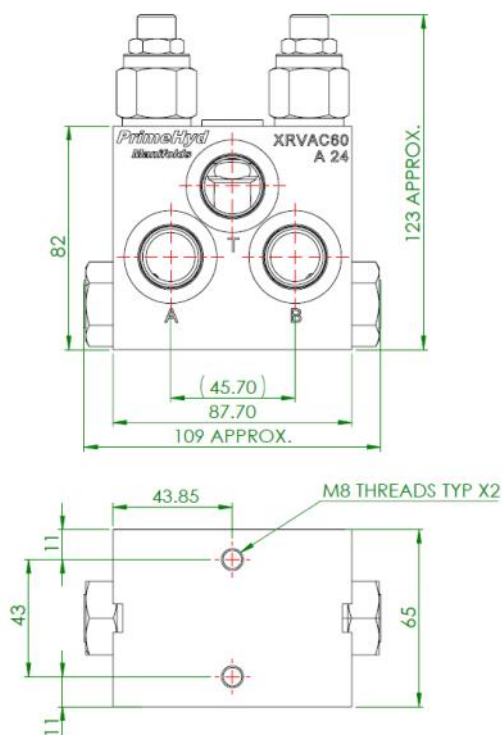
PORT SIZES: SAE10 (7/8" UNO)



ORDERING CODES	ASM WEIGHT APROX.	MATERIAL
XRVAC60	1.5KGS	ALUMINIUM 7075

**DESCRIPTION:** The XRVAC60 cross-line relief valve with anti-cavitation is a compact and lightweight unit consisting of 2 pilot operated pressure relief cartridges with integral check, in a high strength aircraft grade aluminium housing. The valve features a wide adjustment range, variety of add-on adjuster options, and smooth performance to 60 litres per minute. Port spacings have the same centre distance as the ports of some popular series of Char-Lynn, Ross, and White motors, enabling direct mounting by means of commercially available hydraulic fittings. Alternatively, they may be in-line mounted for general applications.

**OPERATION:** When the pre-set pressure is reached in one line, the valve relieves excess pressure to the opposite line, or to tank. Oil may be introduced through tank port 'T' to prevent actuator cavitation



NOTE: VALVES ARE NOT PRESET AND MUST BE ADJUSTED TO SUIT EACH APPLICATION PRIOR TO USE USING APPROPRIATE TESTING EQUIPMENT

