

SAF Safety and Shut-off Block



General

The safety and shut-off block is used to shut off and discharge hydraulic accumulators or user units.

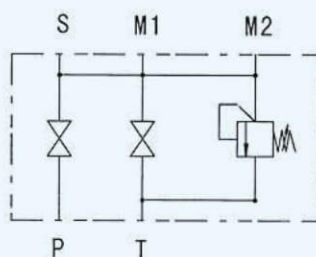
Product Code

SAF	20	M	1	2	Y	1	N	210	A	-	S13
[1]	[2]	[3]	[4]	[5]	[6]	[7]	[8]	[9]	[10]		[11]

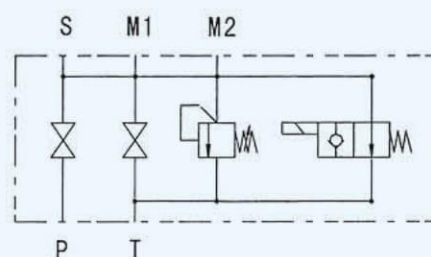
- [1] Model: SAF-SAF series safety and shut-off block
- [2] Safety and Shut-off Block Size: 10 – DN 10
20 – DN 20
32 – DN 32
- [3] Discharge: M–Manual discharge
E–Eletromagnetic movement & manual unloading
- [4] Block material: 1–Carbon steel
- [5] Seal material: 2–NBR
6–FPM
- [6] Eletromagnetic valve movement: Y– Open when power off (Power off unloading)
Z– Close when power off (Power on unloading)
- [7] Voltage type: 1–24VDC
3–220VAC
- [8] Pressure relief valve: N–Adjustable using spanner
- [9] Pressure setting: Max. pressure 31.5MPa
- [10] Thread connection to: A-IS0228 (BSP)
- [11] Adaptor: To accumulator (see accessories) , e.g. S13-G2A

Schematic

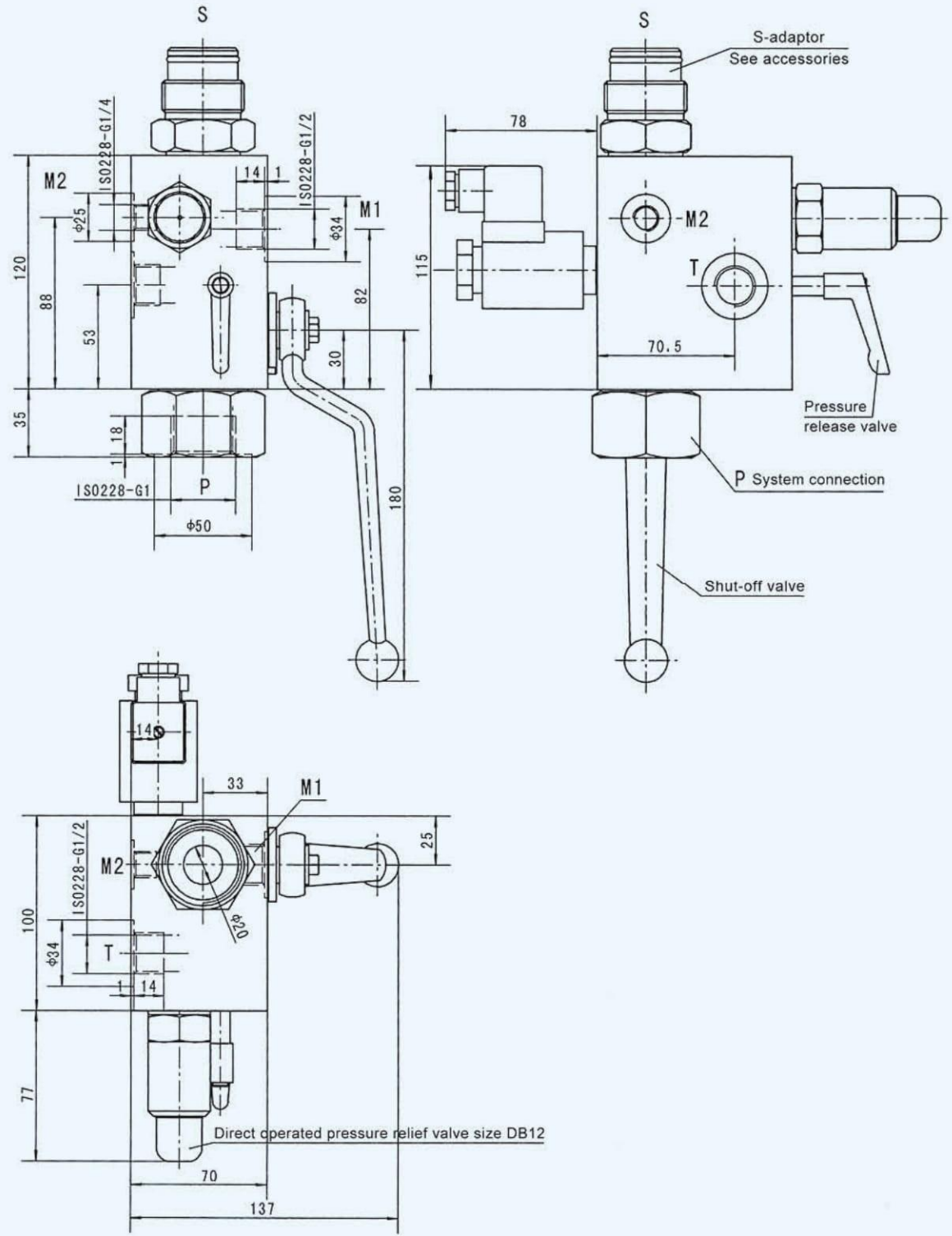
The principle drawing for manual unloading



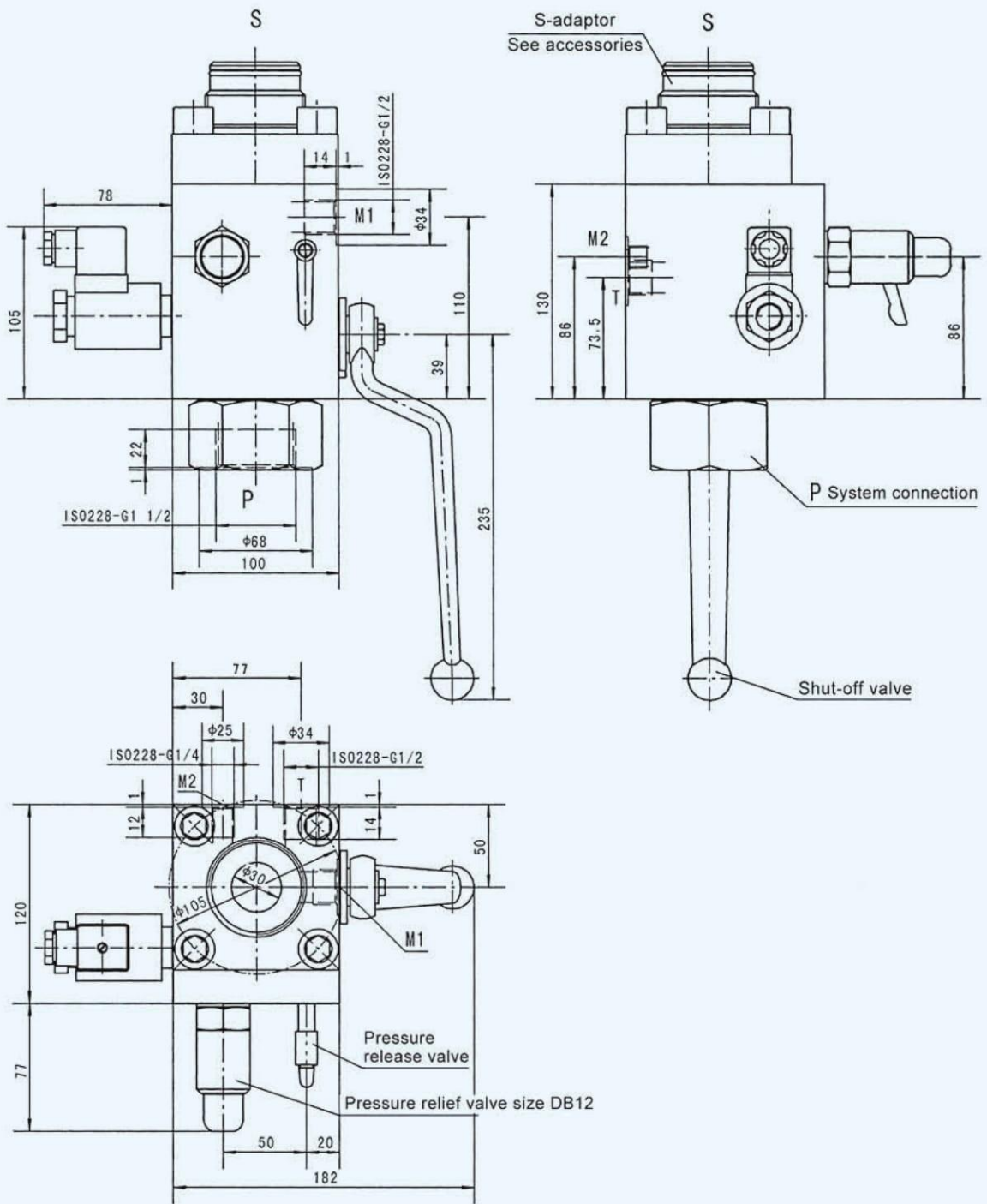
The principle drawing for eletromagnetic unloading



Dimensions: SAF - 20



Dimensions: SAF - 32

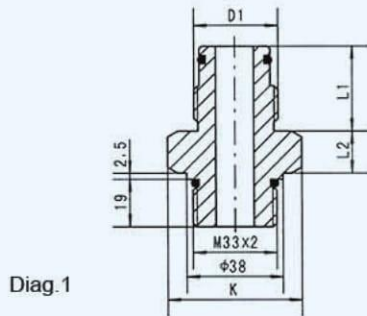


Accessories

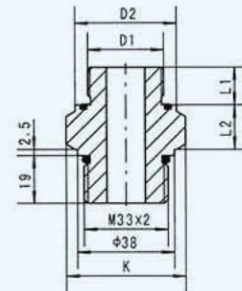
(Adaptor for SAF to connect safety and shut off valve block with accumulator)



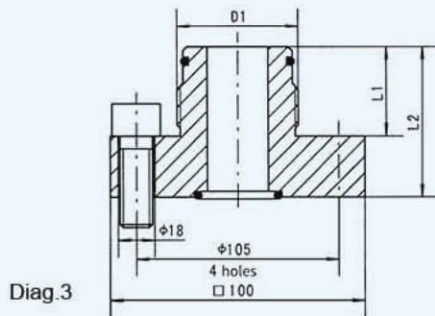
1. Adaptor for standard bladder accumulator



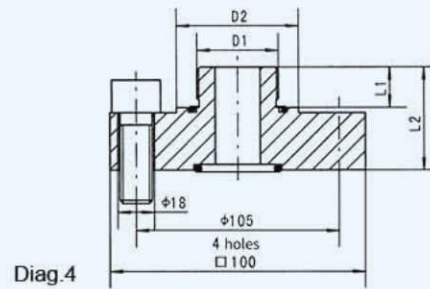
Diag.1



Diag.2



Diag.3



Diag.4

Model	Accumulator Model	D1 Thread	Adaptor	Diag. no	K (sw)	L1 (mm)	L2 (mm)	D2 (mm)
SAF10/20	SB330/400-0.5 to 1L	G ³ /4A	S10	1	41	28	15.5	
	SB550/600-1 to 5L	G1A	S11		46	34	16.5	
	SB330/400-2.5 to 5L	G1 ¹ /4A	S12		46	37	16.5	
	SB330/400-10 to 50L	G2A	S13		65	44	20.5	
	SB440/500/600-10 to 50L				65	44	20.5	
Connection with metric fine thread		M30×1.5	S20	2	41	15	17.5	40
		M40×1.5	S21		55	20	20.5	54
		M50×1.5	S22		65	20	20.5	64
SAF32	SB330/400-0.5 to 1L	G ³ /4A	S305	3		28	58	
	SB550/600-1 to 5L	G 1A	S306			34	64	
	SB330/400-2.5 to 5L	G1 ¹ /4A	S307			37	67	
	SB330/400/600-10 to 50L	G2A	S309			44	74	
	SB440/500-10 to 50L		S308			44	115	
	Connection with metric fine thread		M30×1.5	S330	4		15	47
		M40×1.5	S340			20	51	60
		M50×1.5	S350			20	51	75

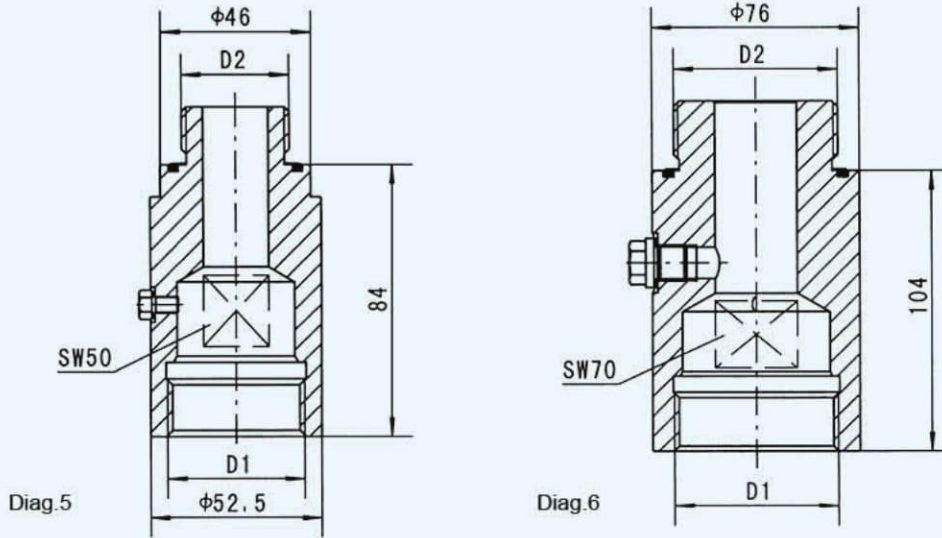
Note: Adaptor in Diag.3 & Diag.4 supplied with 4 off int.hex.screw M16x45 including O-ring.

Accessories

(Adaptor for SAF to connect safety and shut off valve block with accumulator)



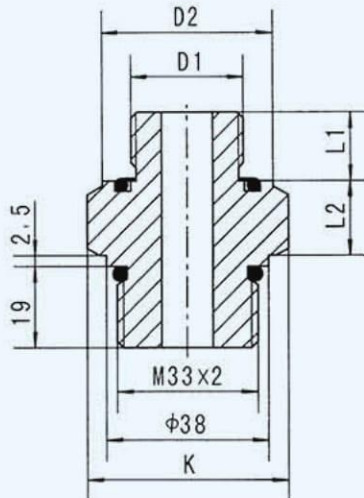
2. Adaptor for piston accumulator



Model	Accumulator Model	Adaptor	Diag.no	D1 Thread	D2 Thread	Corresponding S-adaptor
SAF10/20	SK10/350-2.5 to 7.5L	K406	5	G1/4	G1 A	S12
	SK210/350-10 to 45L	K408	6	G2	G1/2A	S13
SAF32	SK21/350-50 to 120L	K409			G2A	S309

O-ring supplied as part of adaptor.

3. Adaptor for diaphragm accumulator



Model	Accumulator Model	D1 Thread	Adaptor	K (SW)	L1 (mm)	L2 (mm)	D2 (mm)
SAF10/20	SBO...E-0.075 to 1.4L	G1/2A	S30	41	14	17.5	33
	SBO...A6-0.1 to 210-1.3L						
	SBO...E2.0 to 3.5L	G3/4A	S31	41	16	17.5	40
	SBO...A6-400-1.3 to 4L						

O-ring supplied as part of adaptor.