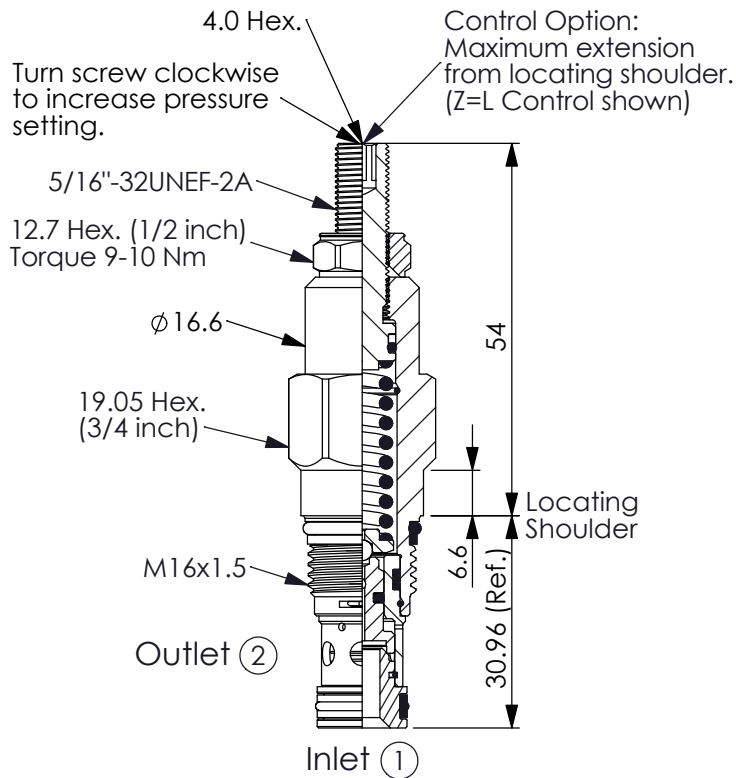
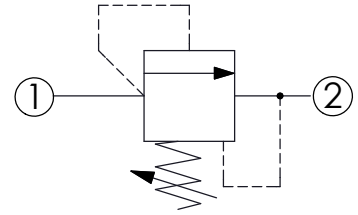


Ordering Code: **RD-162A-X-Y-Z**



UNIT:mm



TECHNICAL DATA

Max. Operating pressure: 350 bar

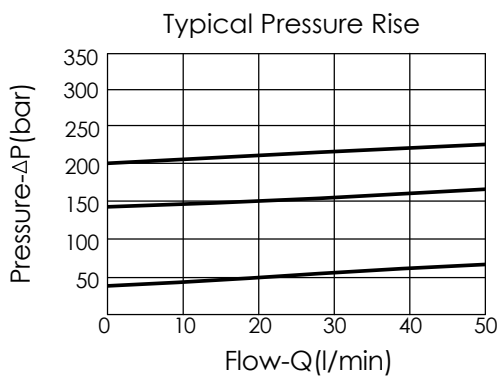
Rated flow: 45 l/min

Cavity-Tooling: 162A-2

Installation torque: 27-33 Nm

Weight: 0.10 (Z=L,LP) 0.12 (Z=K) kg

Will accept maximum pressure at port ②; suitable for use in cross port relief circuits.



X OPERATION

25 Direct Acting
① to ② (P to T)

- Response Time-Typical (2 ms)
- Maximum Leakage Approximately (5 drops/min. to 85% of nominal setting)
- Dirt tolerant

Y PRESSURE SETTING

A 35-210 bar (70 bar Standard Setting)

B 20-105 bar (70 bar Standard Setting)

C 70-420 bar (70 bar Standard Setting)

D 14-55 bar (28 bar Standard Setting)

E 10-28 bar (14 bar Standard Setting)

S 3.5-14 bar (7 bar Standard Setting)

W 55-315 bar (70 bar Standard Setting)

Z OPTIONS

L Leakproof hex. socket screw.



LP Leakproof hex. socket screw. With stainless steel external metal components



K Handknob with Lock Knob.
(Order Code: 7ZAK001)

