

## QUICK HITCH VALVE

INLET PRESSURE: 350 BAR (5000 PSI) MAX

PRESSURE RANGE: 7-100 BAR (100-1500 PSI) ADJUSTABLE

RATED FLOW: 20 L/MIN

WEIGHT: APPROX 1.3 KG.

VOLTAGE: 12 OR 24VDC SEE ORDERING CODE

STANDARD UNIT IS 24VDC

PORT SIZES: ALL G1/4" BSPP

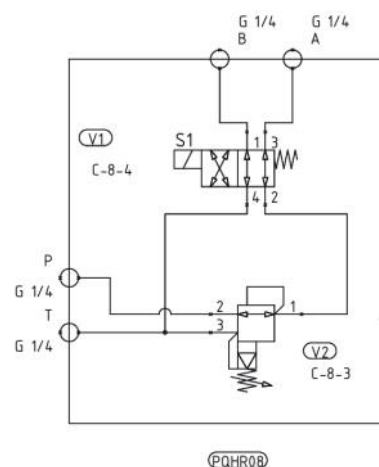
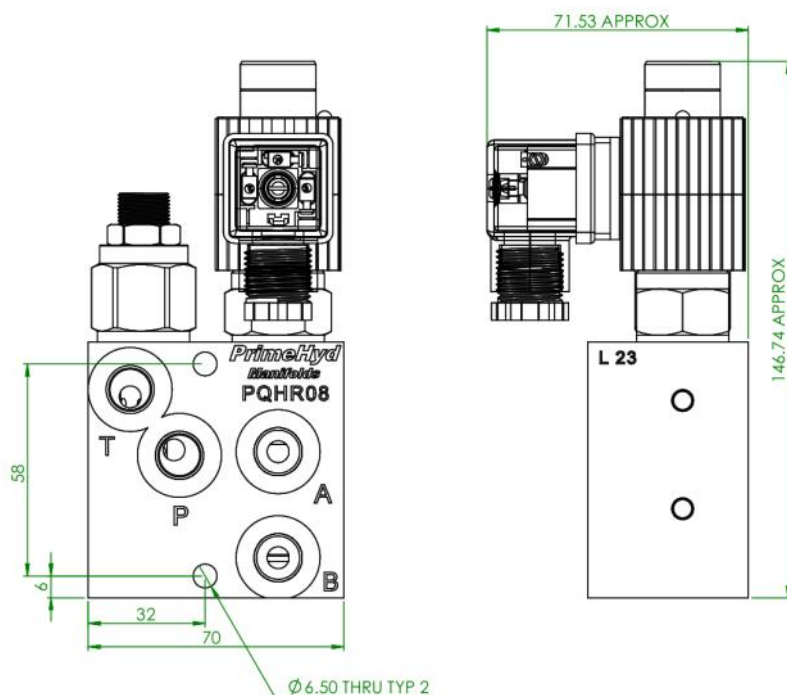
**ATTENTION: TAPERED FITTINGS ARE NOT ACCEPTABLE FOR THIS APPLICATION**



ORDERING CODES	ASM WEIGHT APROX. KG	MATERIAL	VOLTAGE
PQHR08	1.3	STEEL DURA BAR	24 VDC
PQHR08-12	1.3	STEEL DURA BAR	12 VDC

**DESCRIPTION:** The PQHR08 quick hitch valve is a 4 port directional valve shuttle for use in earthmoving machinery for actuation of quick hitch cylinders. The valve incorporates an adjustable pressure reducing valve to limit pressure to the actuating cylinders. It features a plated steel housing, and has a 350 bar (5000 PSI.) inlet pressure rating. This valve has many other applications.

**OPERATION:** When the solenoid is not actuated, the valve reduces pressure applied at port 'P' and applies it to port 'A'. Port 'B' is connected to port 'T'. When the solenoid is actuated, reduced pressure is applied to port 'B', and port 'A' is connected to port 'T'. Reduced pressure is adjustable.



NOTE: VALVES ARE NOT PRESET AND MUST BE ADJUSTED TO SUIT EACH APPLICATION PRIOR TO USE USING APPROPRIATE TESTING EQUIPMENT

