



PRIMEHYD



[www.primehyd.com.au](http://www.primehyd.com.au)

[sales@primehyd.com.au](mailto:sales@primehyd.com.au)

Ph: +61 8 9248 4144

4/471 Victoria Road, Malaga WA  
6090, Australia

A.C.N. 134693342

A.B.N 66134693342

## CETOP5, PARALLEL, SIDE PORTED MANIFOLD

### Ordering Information

HY\* D05 P \* 3 \* / \* / 10

Serial number

A Aluminum 7A04 max. working pressure 20.7Mpa  
D Ductile Iron 45# max. working pressure 31.5Mpa

Valve Pattern 05 NG 10

Parallel Circuit Standard Flow

Parallel Circuit Standard Flow  
01-21

Valve Spacing  
3.25 inch [82.6 mm]

Omit	cavities not required
C	One Common cavity: C-10-2 (P in nose)
S	One Sun Cavity: T-3A (P in nose)

Port Threads	P, T	A, B	GA
P NPT(Z)	0.75	0.5	0.25
S SAE	-12	-8	-6
B BSP(G)	0.75	0.5	None
M M	M27x2	M18x1.5	None

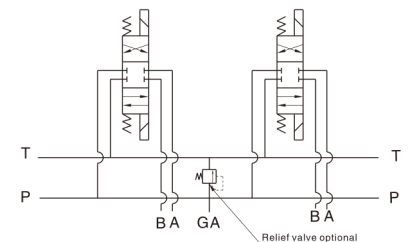
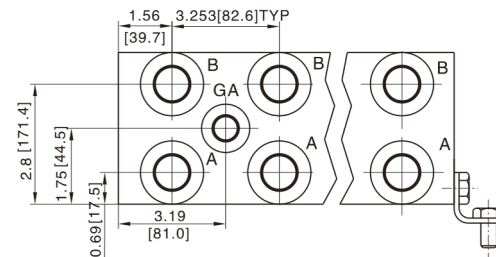
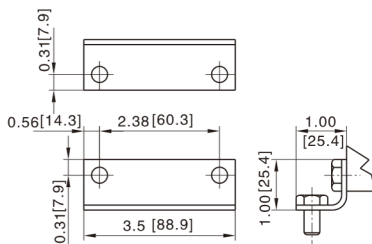
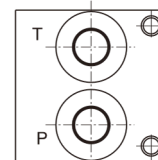
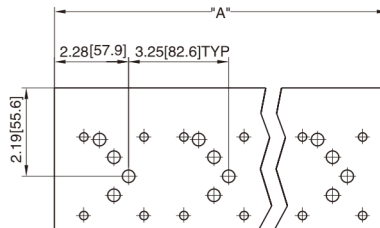
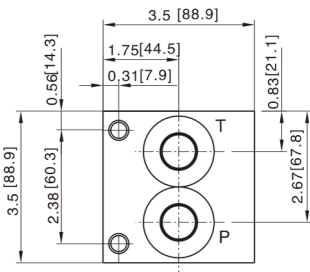


### Technical Details

**ALL OUR MANIFOLDS ARE  
SUPPLIED WITH CAVITY PLUGS.  
RELIEF VALVES ARE SOLD  
SEPARATELY.**

Relief valve cavity

Port code	Valve mtg	Manifold mtg
P, S	0.25-20 UNCx 0.75[19]DP	0.31-18 UNCx 0.44[11.1]DP
B, M	M6 ISO 6Hx 0.75[19]DP	M8 ISO 6Hx 0.44[11.1]DP



No. of stations	* 01	02	03	04	05	06	07	08
"A" length inch (mm)	3.25 [82.6]	6.50 [165.1]	9.75 [247.7]	13.00 [330.2]	16.25 [412.8]	19.50 [495.3]	22.75 [577.9]	26.00 [660.4]
apx. Weight alum (KG)	4 [2]	8 [4]	11 [5]	14 [7]	17 [8]	21 [10]	24 [11]	27 [12]
apx. Weight ferrous (KG)	9 [4]	17 [8]	26 [12]	34 [15]	43 [20]	51 [23]	60 [27]	68 [31]

\*Length of 01 station with relief cavity is 114.8mm. Gauge port is not available on 01 station.

008.10.2025 REV. 2

Specifications, descriptions and dimensional data are subject to correction or change without notice or incurring obligation.