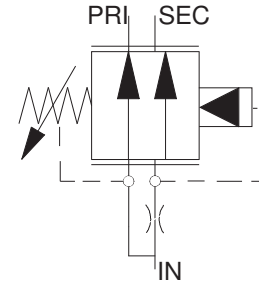
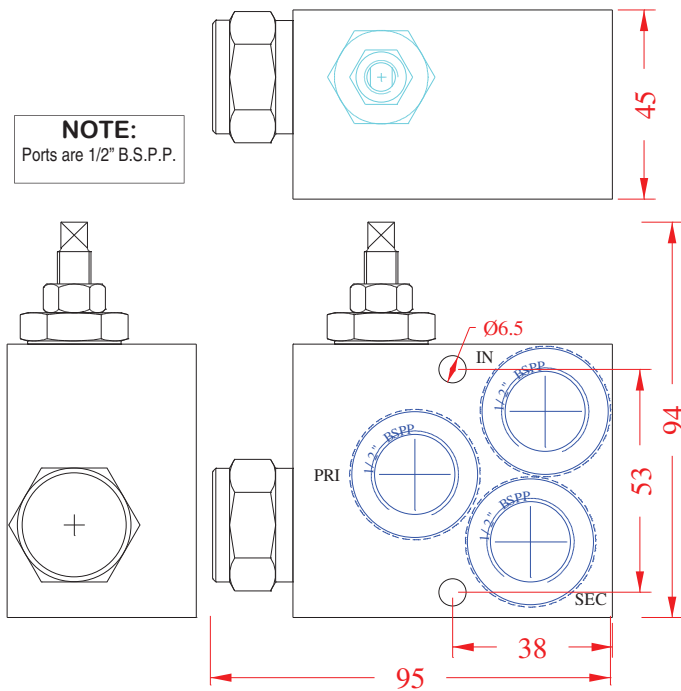


DIMENSIONS



DESCRIPTION: The PCFC12 valve is a 3 port priority flow control for use in high pressure hydraulic circuits. It features a steel body, flow rate to 80 litres/min., and a stainless steel adjusting mechanism.

OPERATION: The valve regulates flow from the 'IN' port to the 'PRI' port and directs the excess to port 'SEC'. The regulated flow from port 'PRI' remains virtually constant regardless of load variations, and can be adjusted from zero to 60 litres/min. maximum by turning the adjustment screw counter-clockwise. The secondary flow can be directed to another circuit, and variations in pressure in either circuit will not substantially affect the priority circuit flow setting.

FEATURES:

- Compact.
- Steel housing.
- Stainless steel flow adjuster assembly.
- All cartridges 100% factory tested.
- Desired settings may be locked.
- Captive flow adjuster cannot be backed out of valve.
- Optional handwheel for flow adjuster (P/N PFA12HW).

SPECIFICATIONS:

OPERATING PRESSURE: 280 bar (4000 p.s.i.) max.

MEDIA: general purpose hydraulic fluids @ -40° c to +120° c.

FLOW: See performance chart.

WEIGHT: 1.7Kg.

MATERIALS: All parts are steel, except seals. Standard seals are Buna N with teflon backups. Viton seals are available on special order.

IMPORTANT PRECAUTIONS

- ♦ All ports are B.S.P. parallel, and appropriate fittings must be used. Tapered fittings are not acceptable.
- ♦ Failure to correctly install or set these valves may result in damage to property, personal injury or death.

ORDERING CODE

VALVE SERIES PFC12