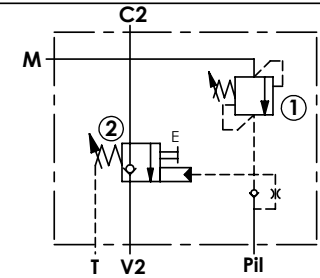
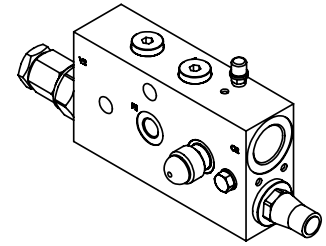
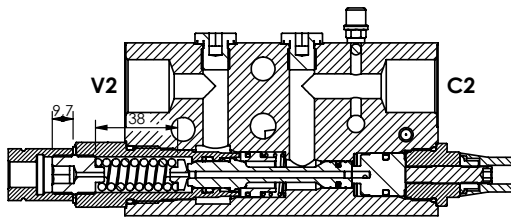
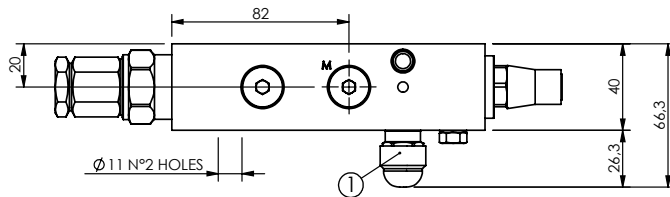
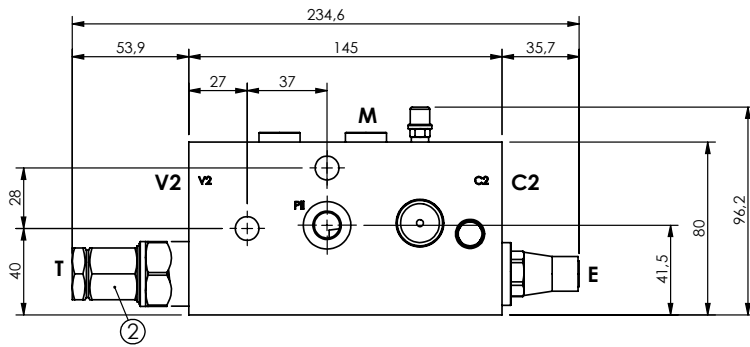


CHECK AND METERING VALVE

**MLST-150-ALLV**

IN LINE VERSION  
LEFT VERSION

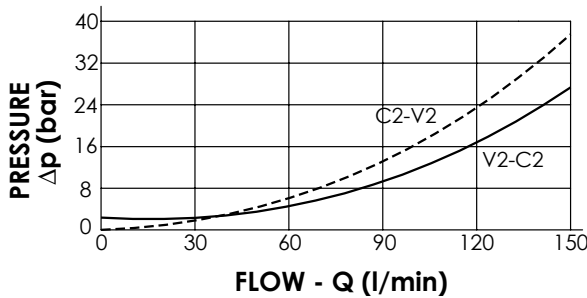


**SPECIFICATIONS**

Max. operating pressure:	420 bar
Rated flow:	150 l/min
Manifold:	Steel
Weight:	3,41 kg

**NOTES**

When correctly adjusted for the special excavator installation, these valves meet the requirement of ISO 8643



**ORDERING CODES**

Quick code	Description	Main ports size	Standard setting (bar)	Adjust. range (bar)	Pressure increase (bar/turn)
ML000010	MLST-150-ALLV-00-G34-N350	V2,C2: G 3/4 Pil,T: G 1/4	① 350 Q=5 l/min ② 7.5 Crack. pr.	① 150-350 ② 5-30	① 165 ② 8
ML000030	MLST-150-ALLV-00-U11-N350	V2,C2: 1 1/16-12 UNF Pil,T: 9/16-18 UNF	① 350 Q=5 l/min ② 7.5 Crack. pr.	① 150-350 ② 5-30	① 165 ② 8