

Needle Valve: LA Series



General

L type throttle valve is a simple flow rate control valve, it is a oil fluid flow rate control valve by change the throttle section or throttle length, its main function is to adjust executive body's working speed.

LA type one way throttle valve is grouped by throttle valve & check valve, to adjust the fluid oil flow rate in one way, The occasion of reverse free reflux.

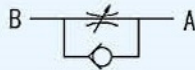
How to order

LA	-	G	10	-	G3/8	-	V
[1]		[2]	[3]		[4]		[5]

- | | |
|--|---|
| [1] Model: L-throttle valve
LA-one way throttle valve | [4] Connection port thread type & specification |
| [2] Connection type: Non-board type
G-pipe type | [5] O-ring Material:
Non-NBR
V-FPM |
| [3] Diameter: 6, 8, 10, 12, 16, 20, 25mm | |

Function symbol

LA type one way throttle valve



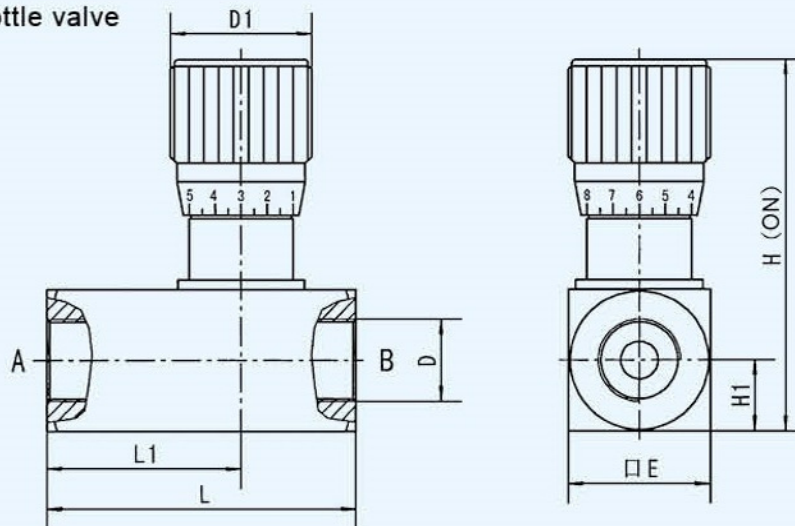
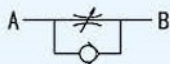
Specifications

Diameter	6	8	10	12	16	20	25
Max. working pressure	31.5MPa						
Max. flow	14	40	60	85	185	200	300
Working medium	Mineral hydraulic oil; Organic phosphate						
Working temperature	-20~70°C						
Cracking pressure	0.05MPa						

Dimensions

Pipe type one way throttle valve

Function symbol



Model	L	L1	D				D1	E	H	H1
LA-G6	58	36	M10x1	G1/8	Rc1/8	1/8NPT	30	28	82	14
LA-G8	64	39	M14x1.5	G1/4	Rc1/4	1/4NPT	30	28	82	14
LA-G10	70	43	M18x1.5	G3/8	Rc3/8	3/8NPT	30	28	82	14
LA-G12	83	52	M22x1.5	G1/2	Rc1/2	1/2NPT	38	38	108	19
LA-G16	89	55.5	M27x2	G3/4	Rc3/4	3/4NPT	38	38	108	19
LA-G20	117	72	M33x2	G1	Rc1	1NPT	47	48	138	24
LA-G25	154	97	M42x2	G1 1/4	Rc1 1/4	1 1/4NPT	47	60	150	30