

2-WAY BALL VALVES WITH LOCKING DEVICE



Item Code

KHB - G1/2 - DS9

[1]

[2]

[3]

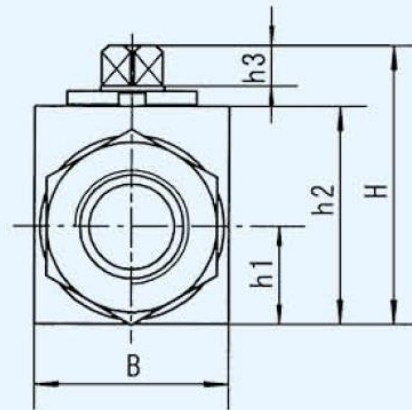
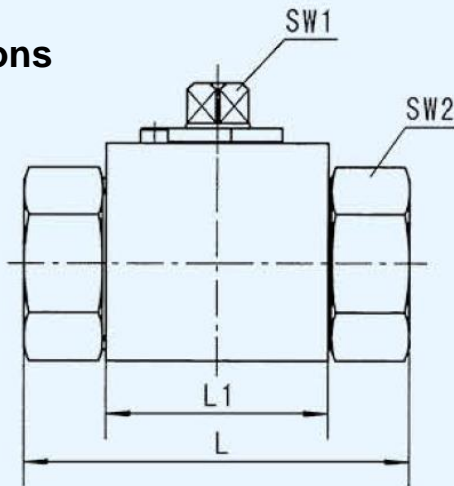
[1] Model: KHB-Square body DN04-25

KHM-Eight-square body DN32-50

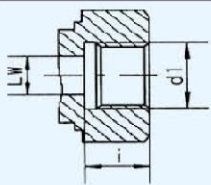
[2] Thread size: e.g. G1/2

[3] Locking device size: DS9, DS14, DS17

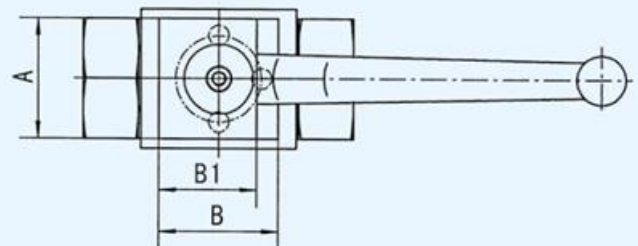
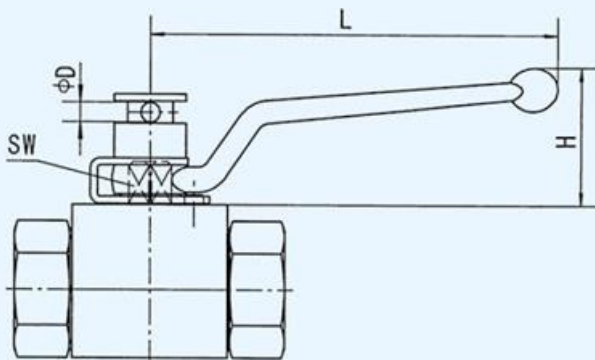
Dimensions



ISO 228 Female



Model	DN	PN	LW	d1	i	L	L1	B	H	h1	h2	h3	SW1	SW2
KHB-G1/4	6	500	6	G1/4	14	69	37	28	44.5	13	32	8	9	22
KHB-G3/8	10	500	10	G3/8	14	72	42	32	52.5	17	40	8	9	27
KHB-G1/2	13	500	13	G1/2	16	83	48	35	52.5	17	40	8	9	30
KHB-G3/4	20	315	20	G3/4	18	95	60	48	75	24	57	12	14	41



Specification	DN (adapt to ball valve diameter)	SW (ball valve stem)	A	B	B1	D	H	L
DS9	4-13	9	32	34	28	6	40	120
DS14	20-25	14	50	50	41	8	60	155
DS17	32-50	17	58	55	46	8	80	235