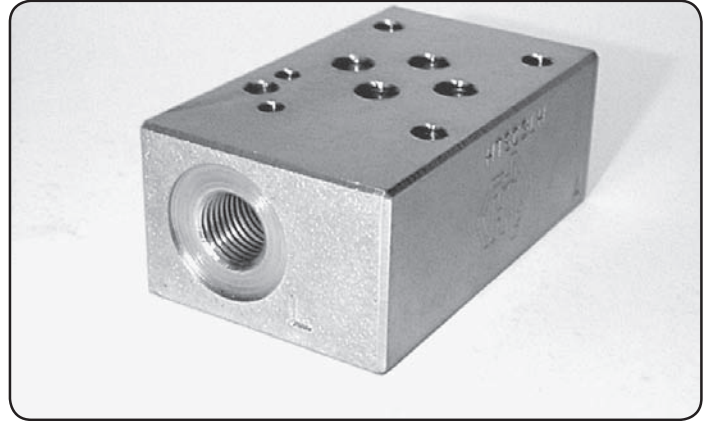
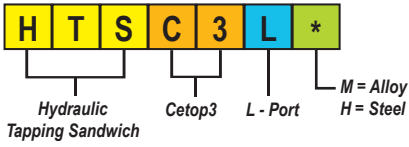


CETOP3



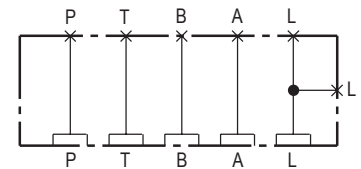
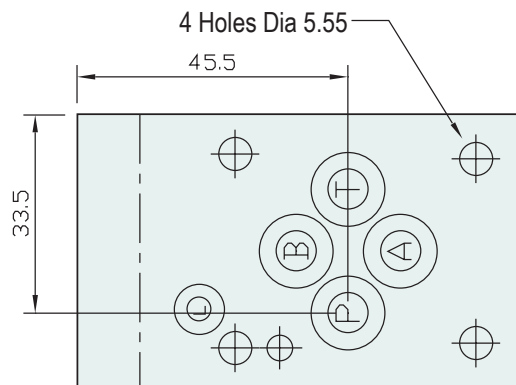
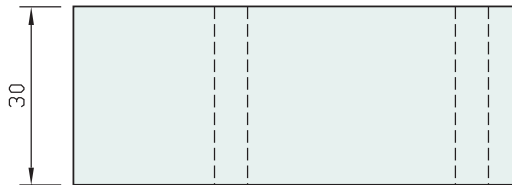
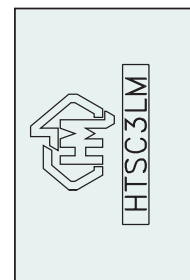
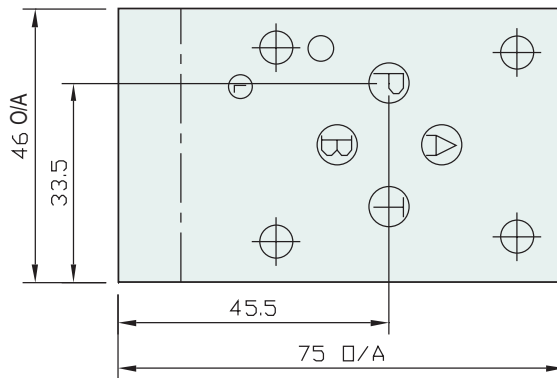
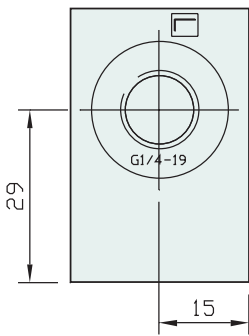
Specifications

Material :	Alloy 6061-T6	Steel - S1214
Max. Working Pressure :	Alloy - 210 Bar	Steel - 350 Bar
Surface Treatment :	Alloy - Nil	Steel - Zinc Gold Passivation
Port Sizes :	L - 1/4" BSPP	

Included Components

O-Rings :	1 each N9-009 , 4 each N9-012
------------------	-------------------------------

Technical Details



Manifold Circuit

Projection



Part Number	Nominal Mass Kg
HTSC3LH	0.75
HTSC3LM	0.25