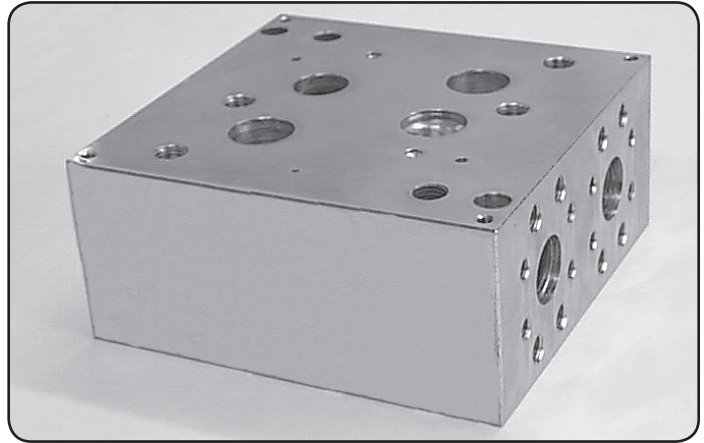
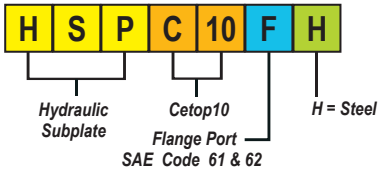


CETOP 10



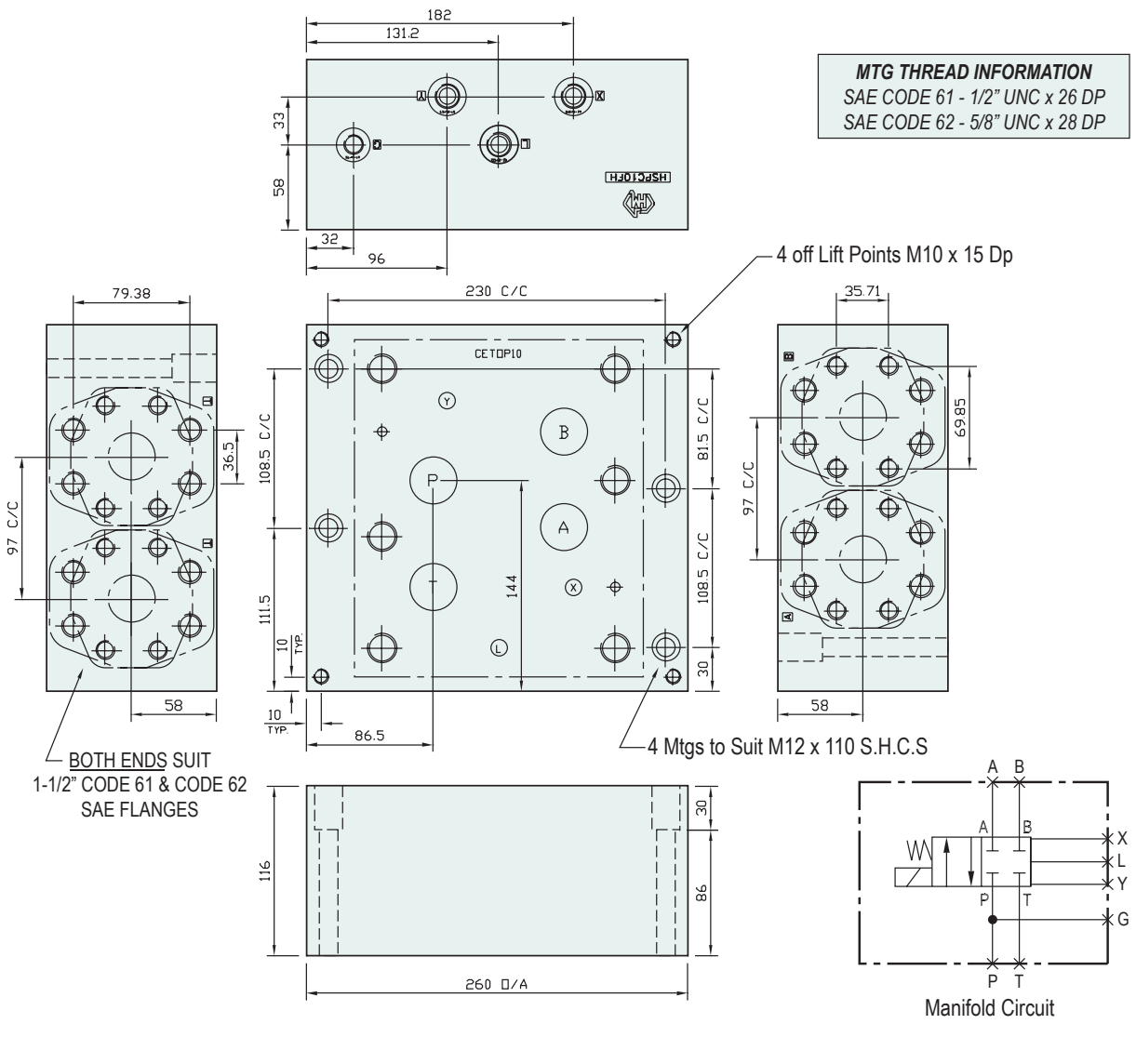
### Specifications

<b>Material :</b>	Steel - AS3678:250
<b>Max. Working Pressure :</b>	Steel - 350 Bar
<b>Surface Treatment :</b>	Steel - Zinc Gold Passivation
<b>Port Sizes :</b>	P & T - 1-1/2" SAE 61 & 62      A & B - 1-1/2" SAE 61 & 62 X , Y & L - 3/8" BSPP                      G - 1/4" BSPP

### Included Components

<b>Socket Head Cap Screws :</b>	(Inc. 4 x M12 Nuts) 4 each M12 x 110
<b>Flat Washers :</b>	4 each M12

### Technical Details



Part Number	Nominal Mass Kg
HSPC10FH	53.0