

### A-T Port or B-T Port

**H S 3 10 2 S 1 \***

Hydraulic  
Sandwich Cetop3

Common  
C10-2  
Cavity

Single  
Cavity

M = Alloy  
H = Steel

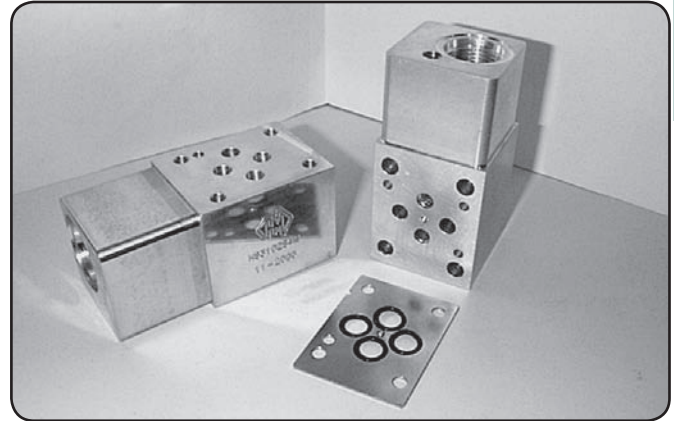
'A' or 'B'-Port interrupt  
Function Example Refer to Circuit Options

### Specifications

Material :	Alloy 6061-T6	Steel - S1214
Max. Working Pressure :	Alloy - 210 Bar	Steel - 350 Bar
Surface Treatment :	Alloy - Nil	Steel - Zinc Gold Passivation

### Included Components

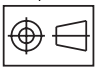
O-Ring Plate :	1 each HSC3OP1H
O-Rings :	4 each N9-012
Locating Pin :	1 each Dia. 4 mm x 10 mm



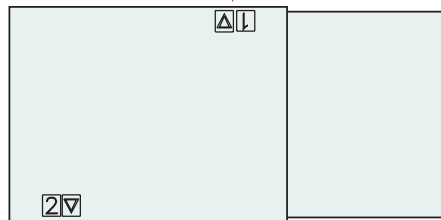
CETOP 3

### Technical Details

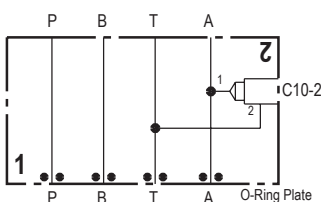
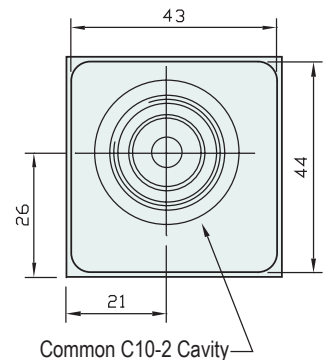
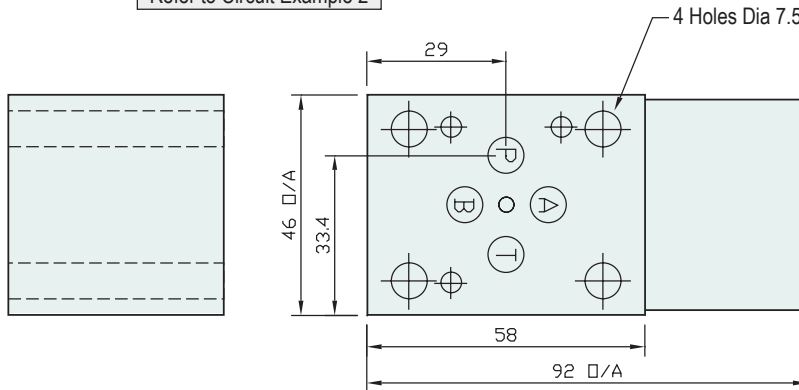
Projection



Refer to Circuit Example 1

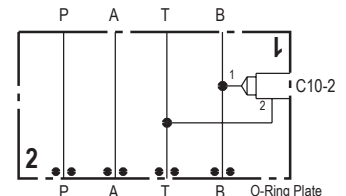
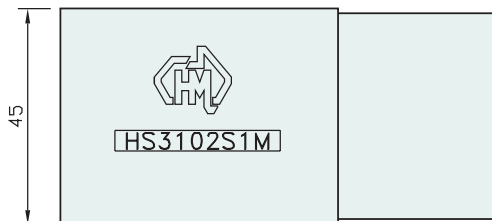


Refer to Circuit Example 2



Circuit Option , Example 1

- 1 - Solenoid Dump Valve 'A'-Port to Tank
- 2 - 'A'-Port Flow Control Bleed Off to Tank
- 3 - 'A'-Port Relief to Tank



Circuit Option - Example 2

- 1 - Solenoid Dump Valve 'B'-Port to Tank
- 2 - 'B'-Port Flow Control Bleed Off to Tank
- 3 - 'B'-Port Relief to Tank

Part  
Number

Nominal  
Mass Kg

HS3102S1H 1.5

HS3102S1M 0.5

HSC3OP1H - O-Ring Plates  
Also Available Separately

Industry Std. C10-2 Cavity Form Suitable for the Following Valve Manufacturers :  
**Modular , Delta , Parker , Hydraforce , Compact & Sterling**

Please Ensure Valve Selection is Suitable for your Application  
For More Information Contact H.M.A. Sales

**SOLD SEPARATELY IF REQUIRED**  
COMMON RELIEF VALVE - RP100-ABN (Suits Alloy) -- RP100-ACN (Suits Steel)