



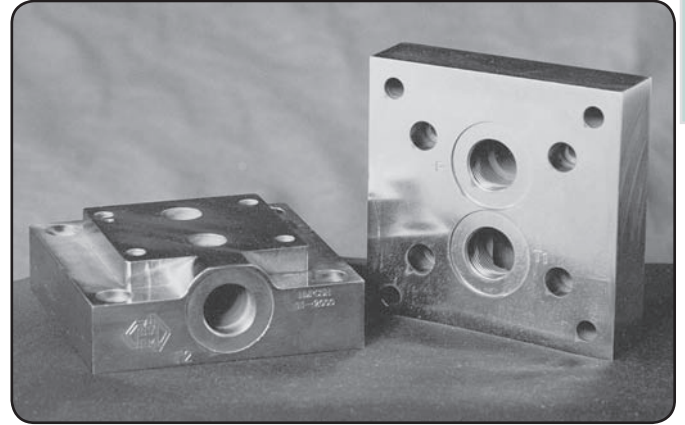
H = Steel
M = Alloy

Specifications

Material :	Alloy 6061-T6	Steel - S1214
Max. Working Pressure :	Alloy - 210 Bar	Steel - 350 Bar
Surface Treatment :	Alloy - Nil	Steel - Zinc Gold Passivation
Port Sizes :	P & T - Ports 3/4" BSPP	

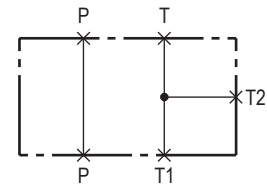
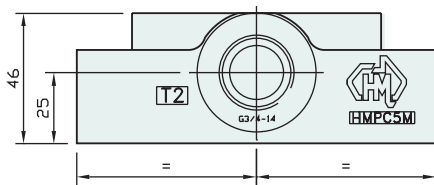
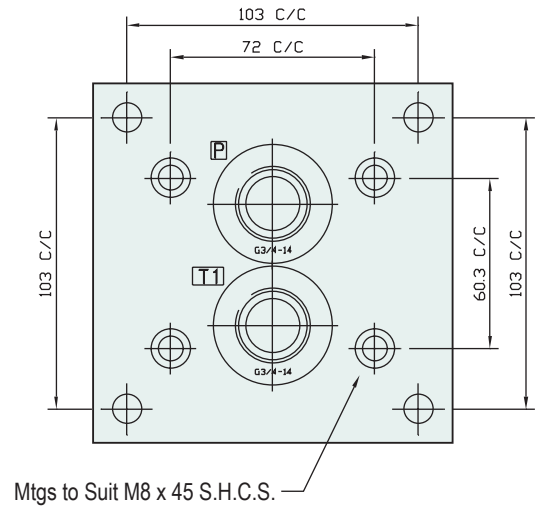
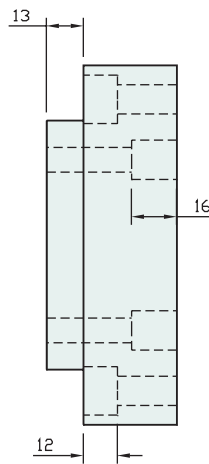
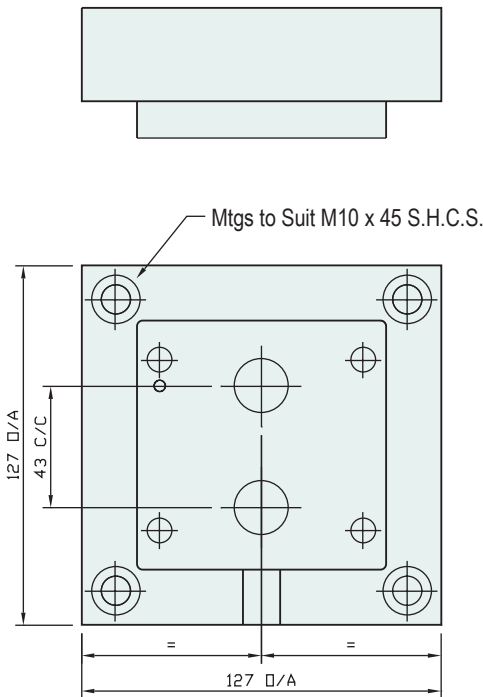
Included Components

Socket Head Cap Screws : (Inc. 4 x M10 Nuts & Washers) 4 each M10 x 45
4 each M8 x 45



Technical Details

PROVIDES BASE FOR VERTICAL MTG OF H.M.A. CETOP5 MANIFOLDS



Manifold Circuit

Projection



Part Number	Nominal Mass Kg
HMPC5H	4.1
HMPC5M	1.8