

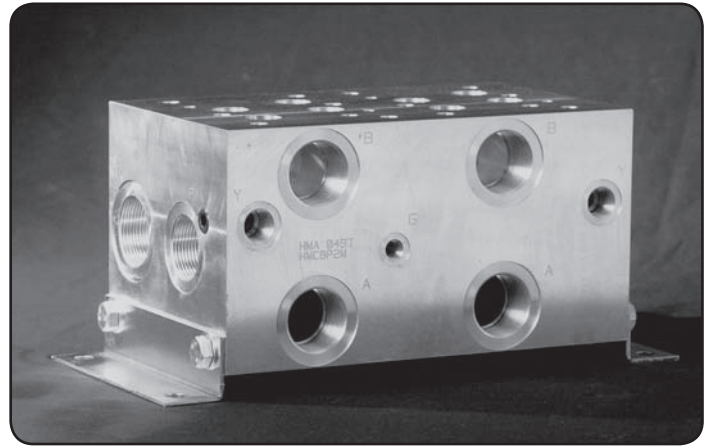
Specifications

Material :	Alloy 6061-T6	Steel - S1214
Max. Working Pressure :	Alloy - 210 Bar	Steel - 350 Bar
Surface Treatment :	Alloy - Nil	Steel - Zinc Gold Passivation
Port Sizes :	T - 1-1/2" BSPP P - 1-1/4" BSPP A & B - 1-1/4" BSP G - 1/4" BSPP X & Y - 3/8" BSPP	

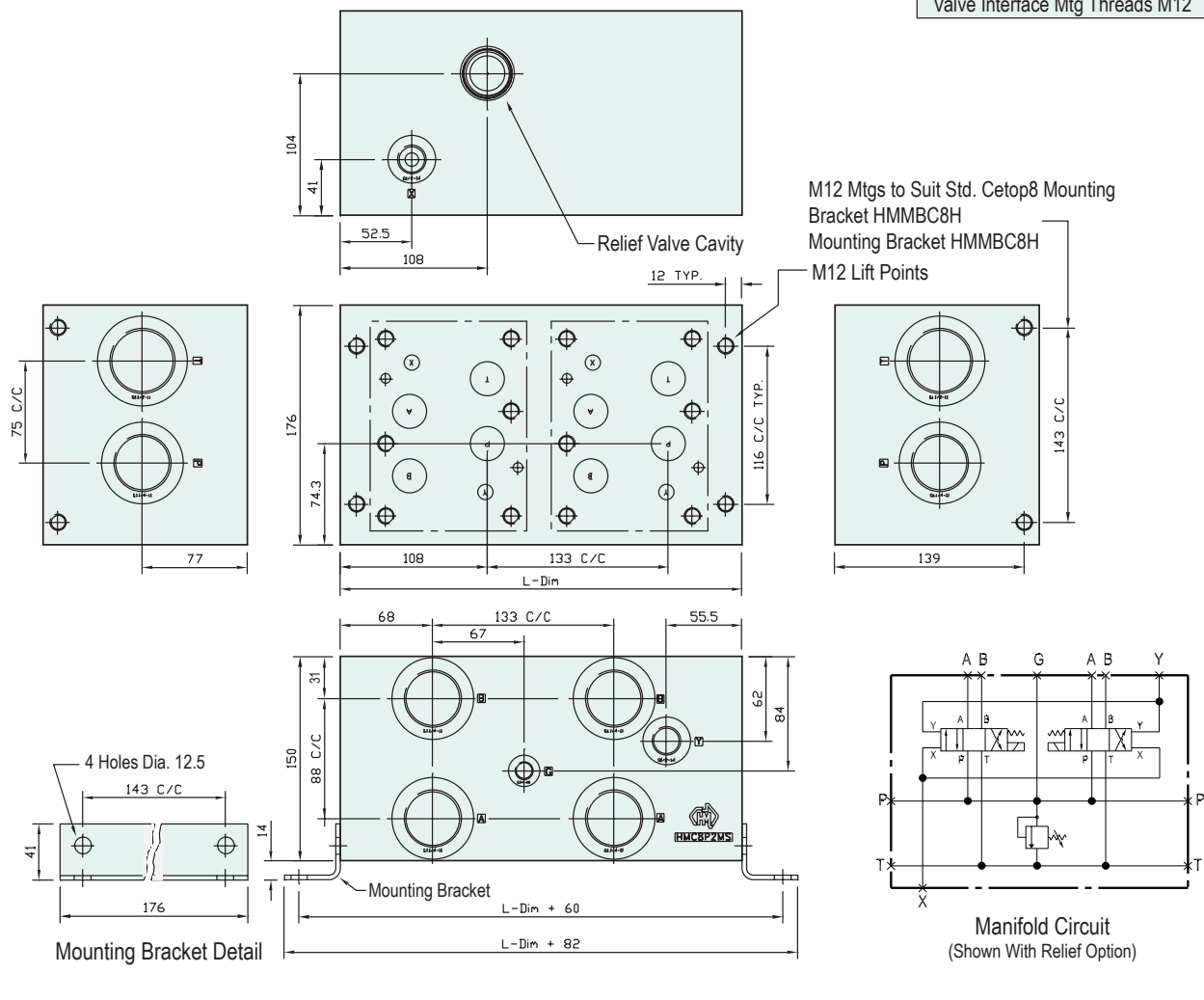
Included Components

Mounting Brackets :	2 each HMMBC8H
Hex. Head Set Screws :	8 each M12 x 25
Flat Washers :	8 each M12

Technical Details



Valve Interface Mtg Threads M12



Manifold - Without Relief Cavity

Steel

Alloy

Part Number	L Dim	Nominal Mass Kg
HMC8P1H	160	31.0
HMC8P2H	295	48.0
HMC8P3H	425	72.0
HMC8P4H	560	94.0

Part Number	L Dim	Nominal Mass Kg
HMC8P1M	160	11.0
HMC8P2M	295	19.0
HMC8P3M	425	27.0
HMC8P4M	560	35.0

Manifold - With Relief Cavity

Steel

Alloy

Part Number	Part Number
HMC8P1HS	HMC8P1MS
HMC8P2HS	HMC8P2MS
HMC8P3HS	HMC8P3MS
HMC8P4HS	HMC8P4MS

3 OR MORE STATIONS MADE TO ORDER

RELIEF VALVES SOLD SEPARATELY

SUN RELIEF VALVE
SUN RELIEF VALVE

RPIC-LCN (Suits Steel)
RPIC-LAN (Suits Alloy)