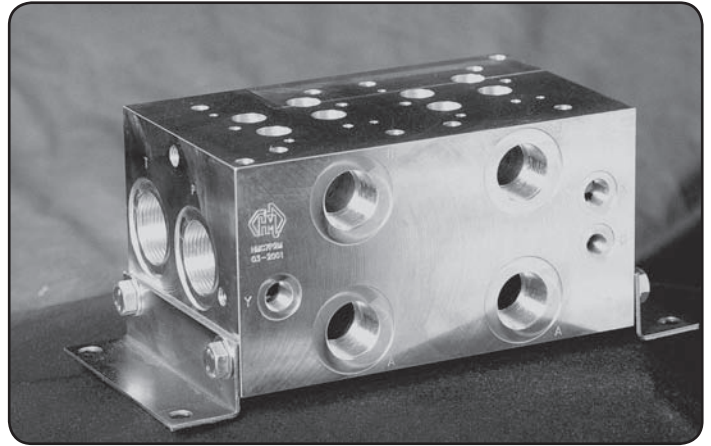


### Specifications

<b>Material :</b>	Alloy 6061-T6	Steel - S1214
<b>Max. Working Pressure :</b>	Alloy - 210 Bar	Steel - 350 Bar
<b>Surface Treatment :</b>	Alloy - Nil	Steel - Zinc Gold Passivation
<b>Port Sizes :</b>	P & T - 1-1/4" BSPP A & B - 1" BSPP	G - 1/4" BSPP X&Y - 3/8" BSPP

### Included Components

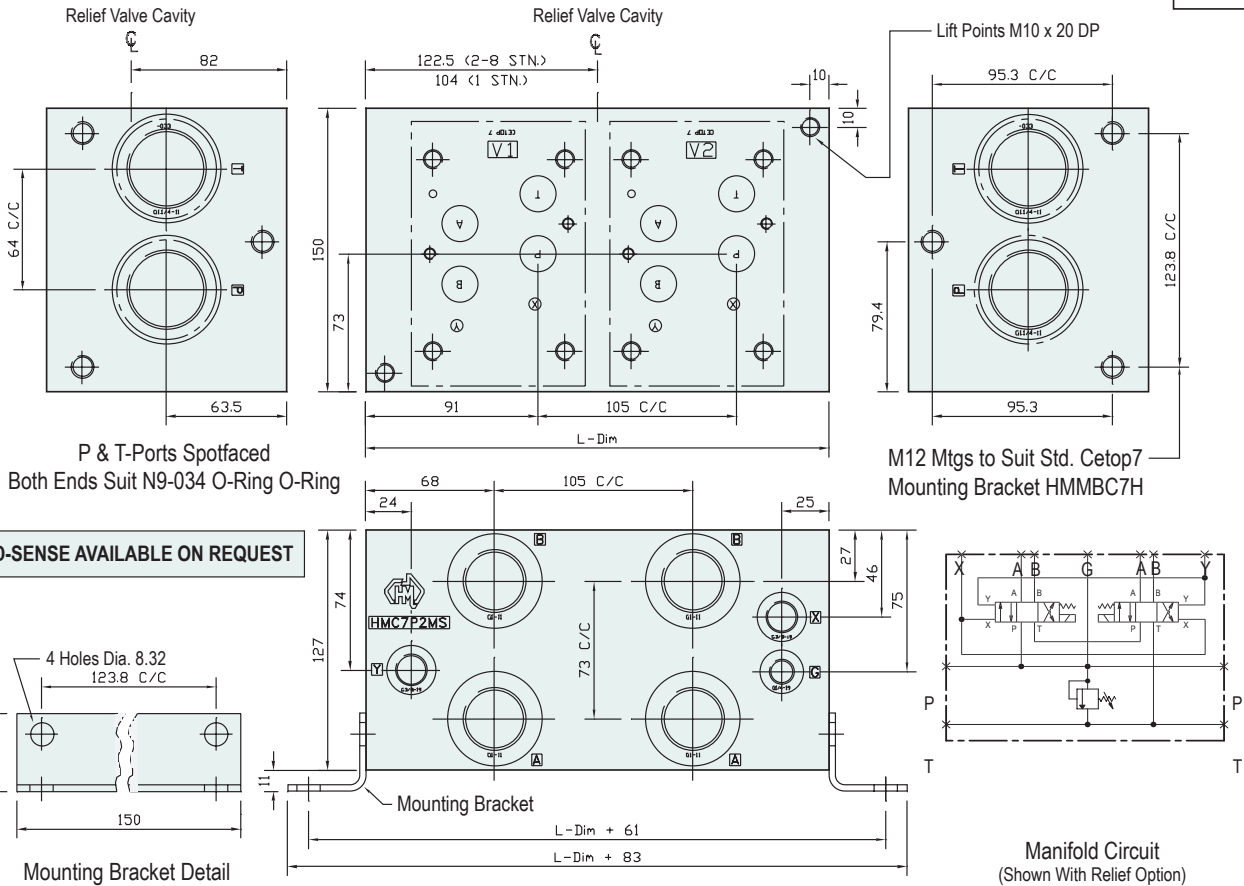
<b>Mounting Brackets :</b>	2 each HMMBC7H
<b>Hex. Head Cap Screws :</b>	8 each M12 x 25
<b>Flat Washers :</b>	8 each M12
<b>O-Rings :</b>	2 each N9-034



### Technical Details

Valve Interface Mtg Threads M6 & M10

Projection



LOAD-SENSE AVAILABLE ON REQUEST

#### Manifold - Without Relief Cavity

#### Manifold - With Relief Cavity

Steel			Alloy			Steel		Alloy	
Part Number	L Dim	Nominal Mass Kg	Part Number	L Dim	Nominal Mass Kg	Part Number	Part Number		
HMC7P1H	155	20.0	HMC7P1M	155	8.0	HMC7P1HS	HMC7P1MS		
HMC7P2H	245	32.0	HMC7P2M	245	12.0	HMC7P2HS	HMC7P2MS		
HMC7P3H	350	44.0	HMC7P3M	350	16.0	HMC7P3HS	HMC7P3MS		
HMC7P4H	455	56.0	HMC7P4M	455	20.0	HMC7P4HS	HMC7P4MS		

3 OR MORE STATIONS MADE TO ORDER

RELIEF VALVES SOLD SEPARATELY

SUN RELIEF VALVES RPIC-LAN (Suits Alloy) RPIC-LCN (Suits Steel)