



CETOP 3



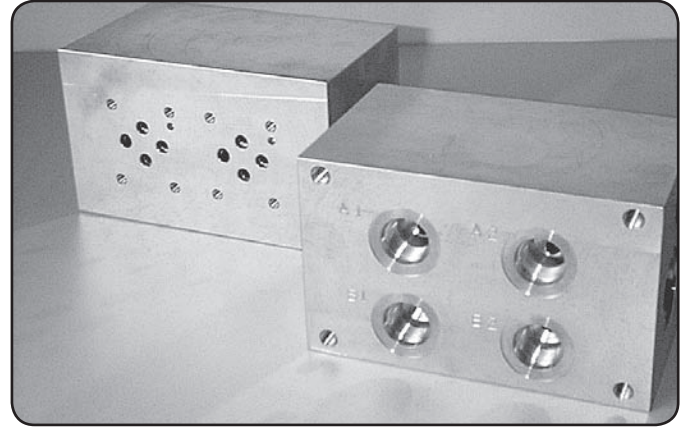
**H** Hydraulic Manifold  
**M** Cetop3  
**C** Parallel  
**3** No. of Stations  
**P** M = Alloy  
           H = Steel  
**\*** S = Sun Relief Cavity T10-A  
       C = Common Relief Cavity C10-2  
       Omit If Relief Not Required

### Specifications

Material :	Alloy 6061-T6	Steel - S1214
Max. Working Pressure :	Alloy - 210 Bar	Steel - 350 Bar
Surface Treatment :	Alloy - Nil	Steel - Zinc Gold Passivation
Port Sizes :	P & T - 7/8" UNF	A & B - 3/4" UNF    G - 7/16" UNF

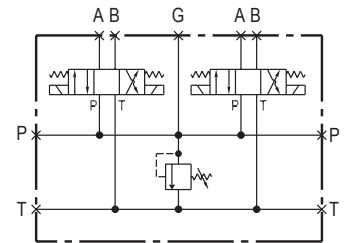
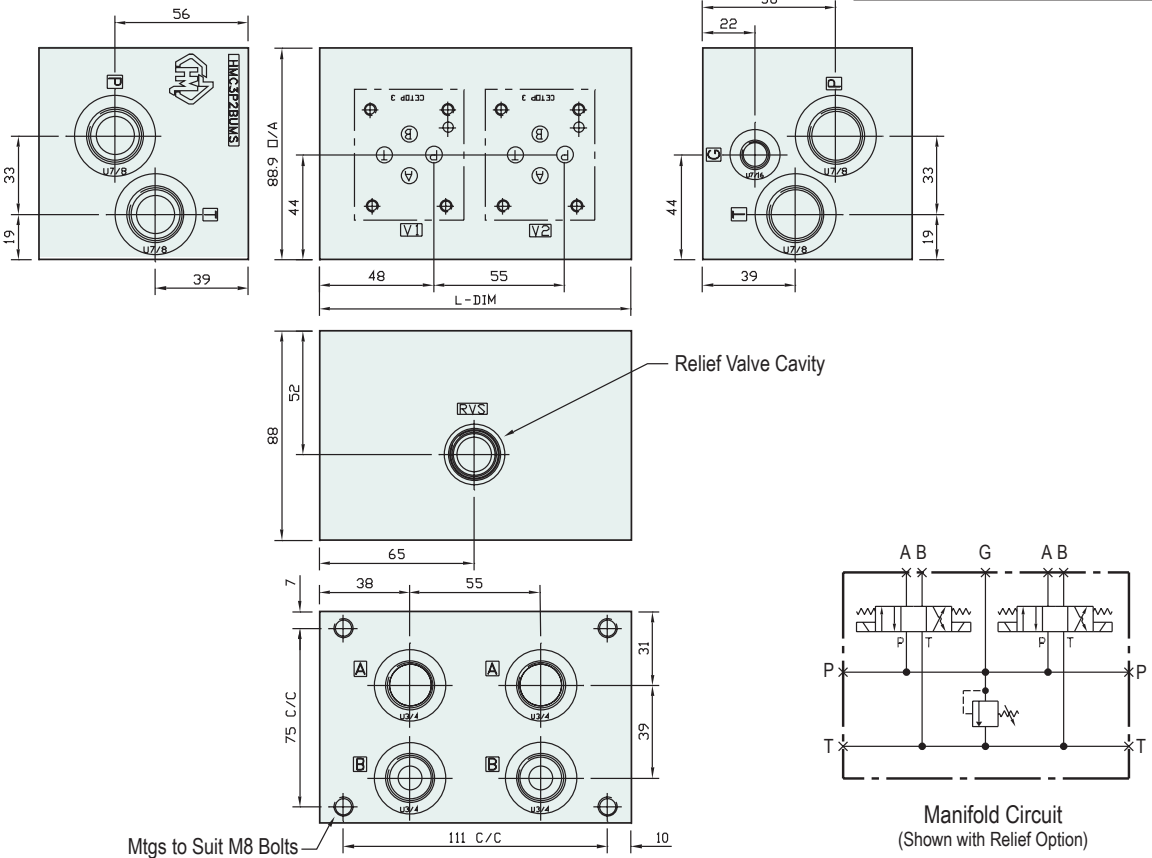
### Included Components

Hex. Head Set Screws :	4 each M8 x 16
Flat Washers :	4 each M8



### Technical Details

Valve Interface Mtg Threads M5



Manifold Circuit  
(Shown with Relief Option)



#### Manifold - Without Relief Cavity

Part Number	L Dim	Nominal Mass Kg
HMC3P1BUH	95	5.8
HMC3P2BUH	131	8.0
HMC3P3BUH	186	11.4
HMC3P4BUH	241	14.8
HMC3P5BUH	296	18.0
HMC3P6BUH	351	22.0
HMC3P7BUH	406	24.9
HMC3P8BUH	461	28.2

#### Manifold - With Relief Cavity

Alloy			Steel	
Part Number	L Dim	Nominal Mass Kg	Part Number	Part Number
HMC3P1BUM	95	2.2	HMC3P1BUH *S or C	HMC3P1BUM *S or C
HMC3P2BUM	131	3.1	HMC3P2BUH *S or C	HMC3P2BUM *S or C
HMC3P3BUM	186	4.0	HMC3P3BUH *S or C	HMC3P3BUM *S or C
HMC3P4BUM	241	4.9	HMC3P4BUH *S or C	HMC3P4BUM *S or C
HMC3P5BUM	296	5.8	HMC3P5BUH *S or C	HMC3P5BUM *S or C
HMC3P6BUM	351	6.7	HMC3P6BUH *S or C	HMC3P6BUM *S or C
HMC3P7BUM	406	7.5	HMC3P7BUH *S or C	HMC3P7BUM *S or C
HMC3P8BUM	461	8.3	HMC3P8BUH *S or C	HMC3P8BUM *S or C

ALL BOTTOM ENTRY MANIFOLDS MADE TO ORDER

RELIEF VALVES SOLD SEPARATELY

SUN RELIEF VALVE	RPEC-LAN	(Suits Alloy)
SUN RELIEF VALVE	RPEC-LCN	(Suits Steel)
COMMON RELIEF VALVE	RP100-ABN	(Suits Alloy)
COMMON RELIEF VALVE	RP100-ACN	(Suits Steel)