

CETOP5



Hydraulic Cavity Module

Cetop5

H = Steel

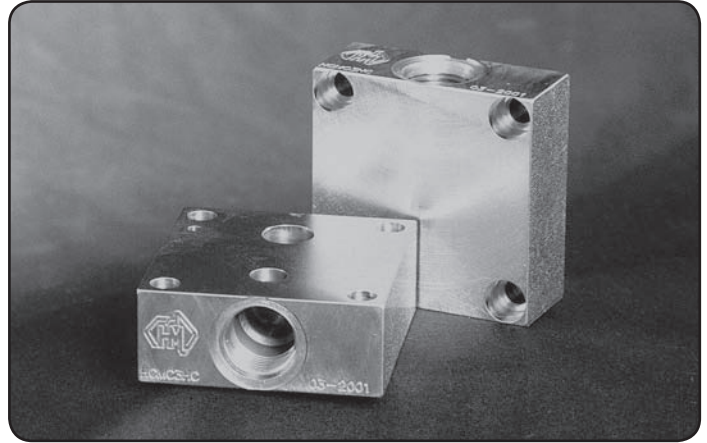
S = Sun Relief Cavity T10-A  
 C = Common Cavity C10-2  
 Omit If No Relief Required

### Specifications

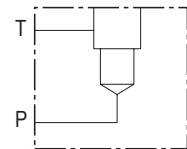
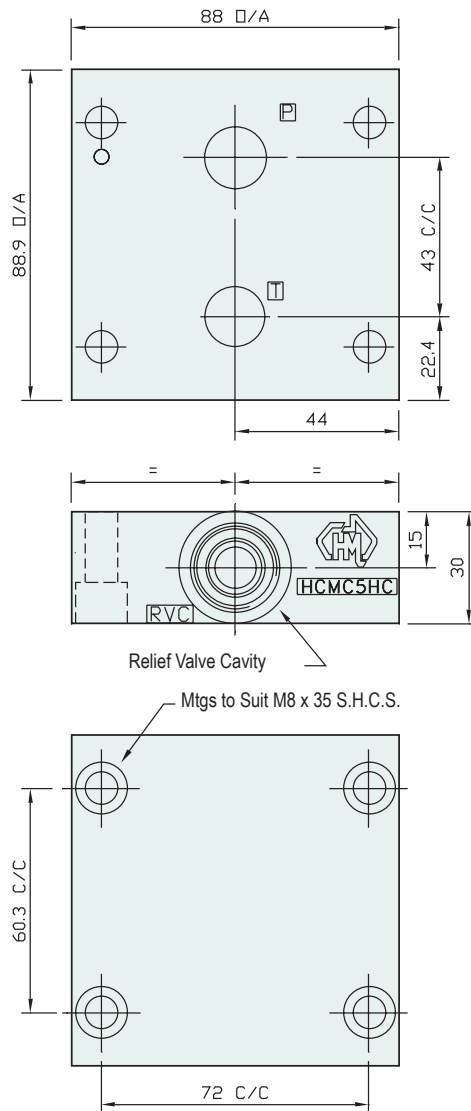
**Material :** H = Steel - S1214  
**Max. Working Pressure :** Steel - 350 Bar  
**Surface Treatment :** Steel - Zinc Gold Passivation

### Included Components

**Socket Head Cap Screws :** 4 each M8 x 35  
**Dowel Pin :** 1 each 4mm Dia



### Technical Details



Manifold Circuit

Projection



#### Cavity Module - With Common Relief Cavity

Part Number	Nominal Mass Kg
HCMC5HC	2.6

#### RELIEF VALVES SOLD SEPARATELY

**SUN RELIEF VALVE** RPEC-LCN  
**COMMON RELIEF VALVE** RP100-ACN

#### Cavity Module - With Sun Relief Cavity

Part Number	Nominal Mass Kg
HCMC5HS	2.6