

CETOP5



Hydraulic Cavity Module

Cetop5

H = Steel

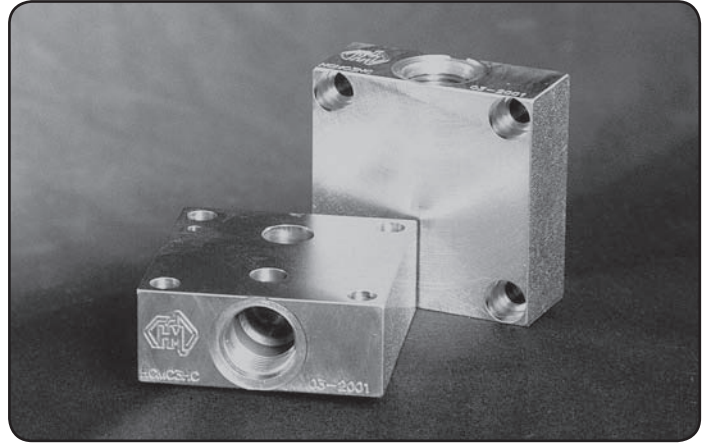
S = Sun Relief Cavity T10-A
 C = Common Cavity C10-2
 Omit If No Relief Required

Specifications

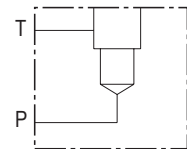
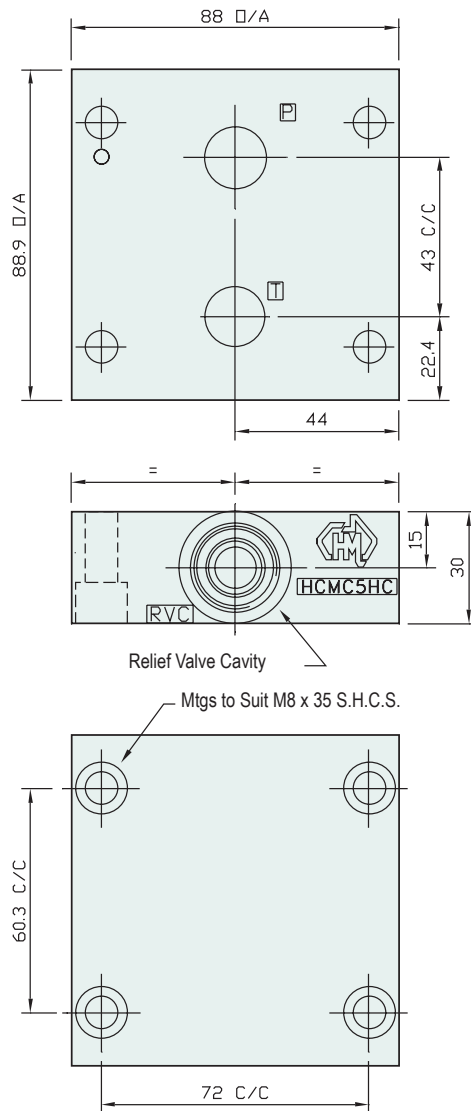
Material : H = Steel - S1214
Max. Working Pressure : Steel - 350 Bar
Surface Treatment : Steel - Zinc Gold Passivation

Included Components

Socket Head Cap Screws : 4 each M8 x 35
Dowel Pin : 1 each 4mm Dia



Technical Details



Manifold Circuit

Projection



Cavity Module - With Common Relief Cavity

Part Number	Nominal Mass Kg
HCMC5HC	2.6

RELIEF VALVES SOLD SEPARATELY

SUN RELIEF VALVE RPEC-LCN
COMMON RELIEF VALVE RP100-ACN

Cavity Module - With Sun Relief Cavity

Part Number	Nominal Mass Kg
HCMC5HS	2.6