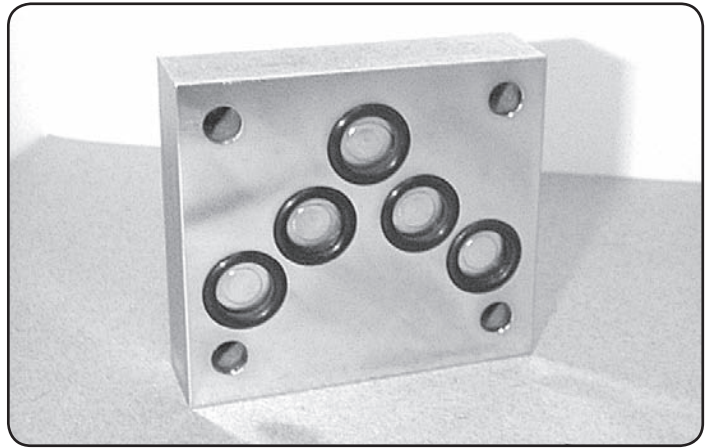
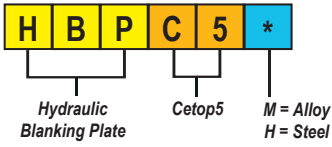


CETOP5



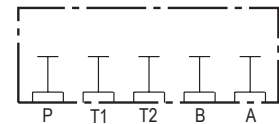
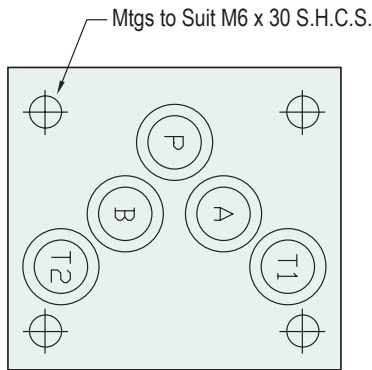
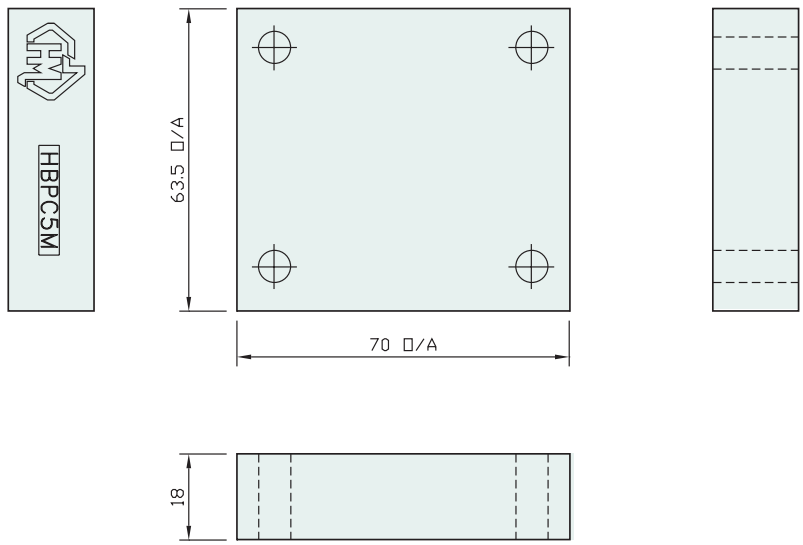
### Specifications

<b>Material :</b>	Alloy 6061-T6	Steel - S1214
<b>Max. Working Pressure :</b>	Alloy - 210 Bar	Steel - 350 Bar
<b>Surface Treatment :</b>	Alloy - Nil	Steel - Zinc Gold Passivation

### Included Components

<b>Socket Head Cap Screws :</b>	4 each M6 x 30
<b>O-Rings :</b>	5 x N9-014

### Technical Details



Manifold Circuit



Part Number	Nominal Mass Kg
HBPC5H	0.7
HBPC5M	0.3