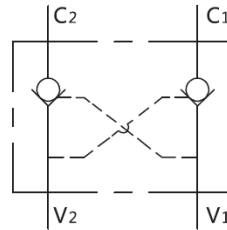


DOUBLE PILOT OPERATED CHECK VALVE



SCHEMATIC



DESCRIPTION

The DPOCV consists of two pilot operated 2-port check valves in series, for use in high pressure hydraulic circuits.

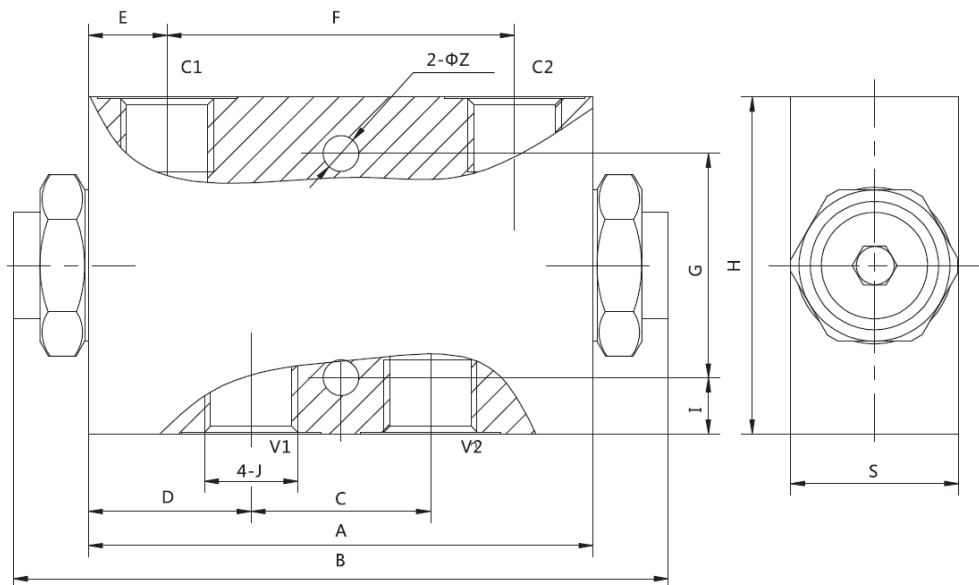
OPERATION

The valve is used to block hydraulic flow in both directions. Flow is free in one direction and blocked in the reverse direction until pilot pressure is applied.

SPECIFICATIONS

Model	DPOCV-38	DPOCV-12
Pilot Ratio	7.1:1	3.2:1
Rated Flow	30 L/min	50 L/min
Rated Pressure	35 MPa	35 MPa
V1-V2	3/8"	1/2"

DIMENSIONS



MODEL	A	B	C	D	E	F	G	H	I	S	Z
DPOCV-38	90	117	32	29	14	62	40	60	10	30	6.5
DPOCV-12	110	142.5	34	38	20.5	69	40	70	15	35	8.5

*All measurements in mm.