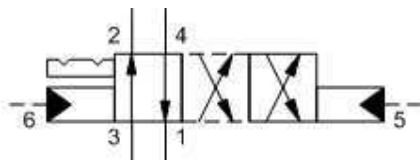


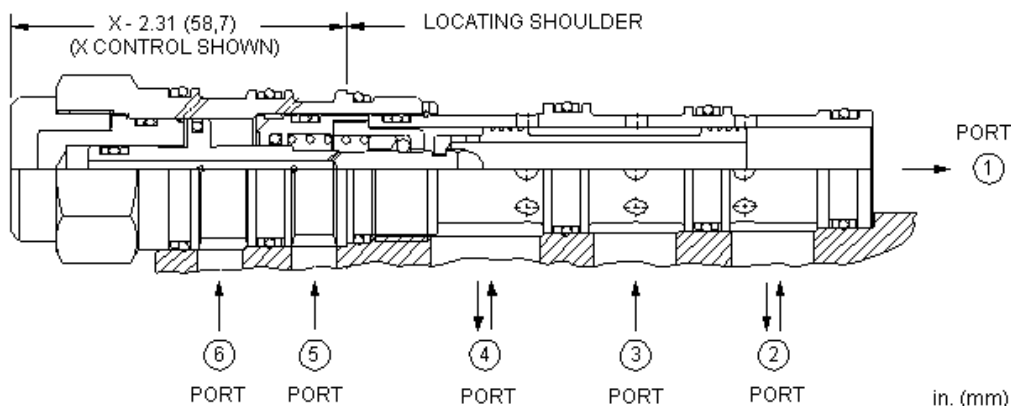
X-Control, C-Spool



X-Control, H-Spool



X-Control, X-Spool



Two-position, detented, 4-way directional cartridges are 6-port directional valves that can be configured with up to 3 different spool options. The supply port is port 3 and all ports will accept 5000 psi (350 bar). Capacity for these pilot-to-shift valves is dependent on the spool type specified.

TECHNICAL DATA

NOTE: DATA MAY VARY BY CONFIGURATION. SEE CONFIGURATION SECTION.

Cavity	T-62A
Series	2
Capacity	20 - 30 gpm
Minimum Pilot Pressure Required to Shift Valve	150 psi
Maximum Operating Pressure	5000 psi
Maximum Valve Leakage at 110 SUS (24 cSt)	2 in ³ /min. @1000 psi
Pilot Volume Displacement	.12 in ³
Valve Hex Size	1 1/8 in.
Valve Installation Torque	45 - 50 lbf ft
Seal kit - Cartridge	Buna: 990062007
Seal kit - Cartridge	Polyurethane: 990062002
Seal kit - Cartridge	Viton: 990062006
Model Weight	0.83 lb.

CONFIGURATION OPTIONS

Model Code Example: DCDDXCN

CONTROL	(X)	SPOOL CONFIGURATION	(C)	SEAL MATERIAL	(N)	MATERIAL/COATING
X Standard Pilot		C Blocked Crossover		N Buna-N		Standard Material/Coating
		H Open Crossover		V Viton		/AP Stainless Steel, Passivated
		X P to B and A to T Crossover				/LH Mild Steel, Zinc-Nickel

TECHNICAL FEATURES

- All ports will accept 5000 psi (350 bar), including the x and y pilot ports (port 5 and port 6).
- Leakage listed in technical data is for each path.
- The pilot ports, 5 and 6, are positively sealed from the work ports.
- Hardened spool and sleeve provide consistent and low spool leakage rates and excellent wear characteristics.
- Incorporates the Sun floating style construction to minimize the possibility of internal parts binding due to excessive installation torque and/or cavity/cartridge machining variations.

PERFORMANCE CURVES

