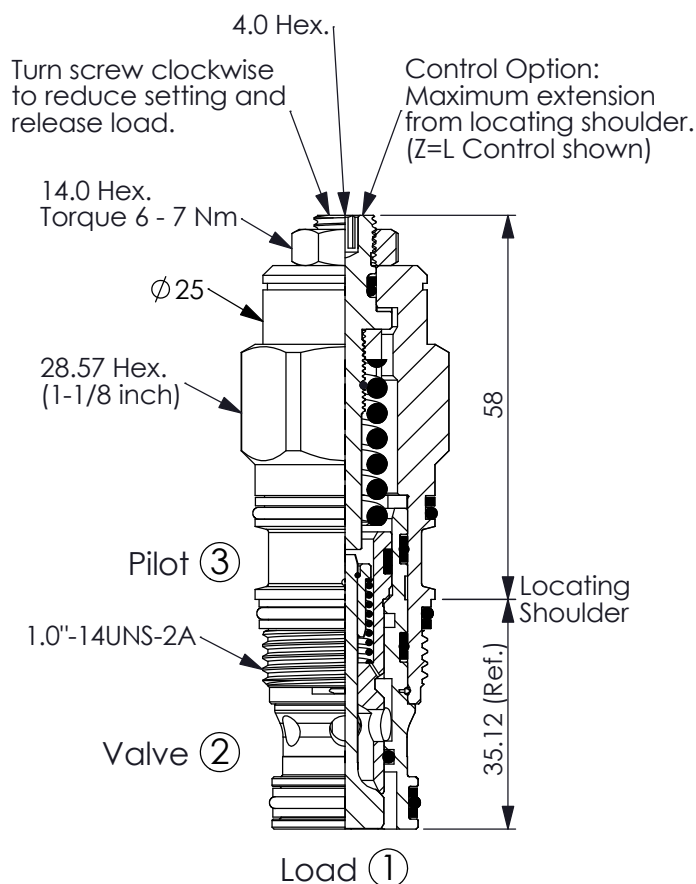


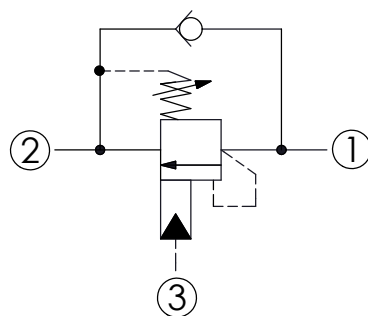
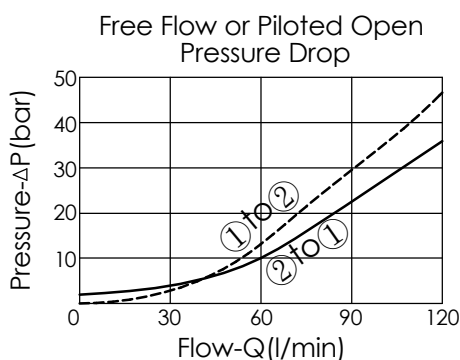
COUNTERBALANCE VALVE

Ordering Code: **CB-2A-X-Y-Z**



UNIT:mm

Illustrations / detail are for reference only. Data subject to change.



TECHNICAL DATA

Max. Setting:	280	bar
Rated flow:	120	l/min
Cavity-Tooling:	2A-3	
Installation torque:	60 - 70	Nm
Weight:	0.29 (Z=L)	kg
Pressure Setting: Setting should be 1.3 times maximum load induced pressure. (We suggest when the Max. setting pressure is 280 bar, the load pressure has to be lower than 215 bar.)		

X PILOT RATIO

33	3 : 1
3A	1.5 : 1 (with sealed pilot)
3C	3 : 1 (with sealed pilot)
3Q	2 : 1 (with bleed through pilot)

Z OPTIONS

L	Leakproof hex. socket screw.	
LP	Leakproof hex. socket screw. With stainless steel external metal components	
C	Stainless Steel Tamper Resistant Cover.	
CA	Plastic Tamper Resistant Cover	

Y SPRINGS

ADJUSTMENT RANGES(1.7 bar Cracking Pressure)

H	70 - 280 bar (210 bar Standard Setting)
I	25 - 105 bar (70 bar Standard Setting)

SPECIAL PURPOSES(0.3 bar Cracking Pressure)

A	70 - 280 bar (210 bar Standard Setting)
B	25 - 105 bar (70 bar Standard Setting)
E	16 - 55 bar (25 bar Standard Setting)