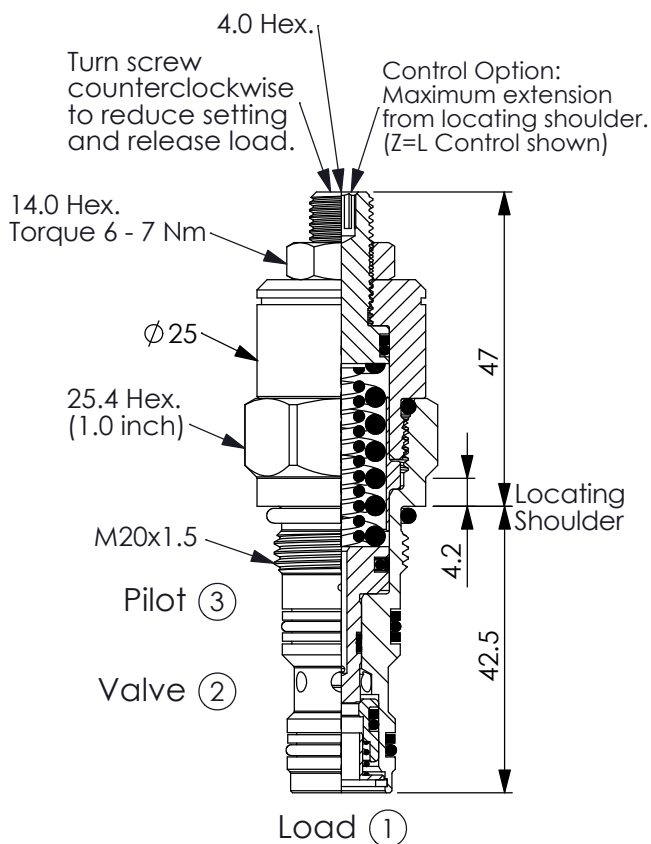


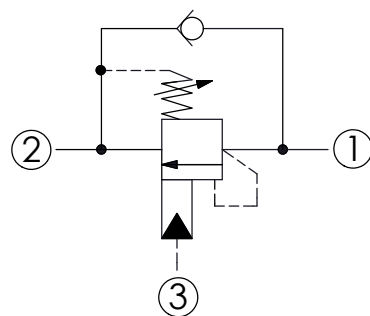
## COUNTERBALANCE VALVE

Ordering Code: **CB-20MS-X-Y-Z**



UNIT:mm

Illustrations / detail are for reference only. Data subject to change.

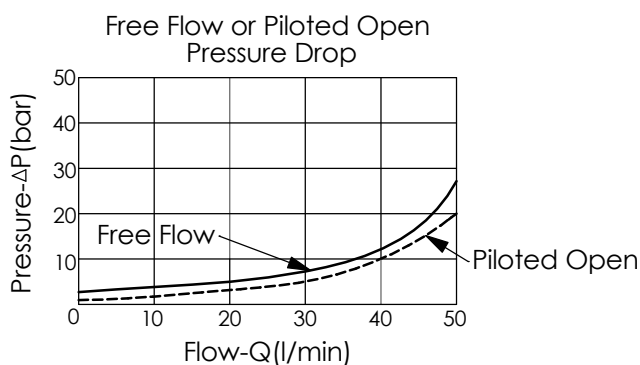


### TECHNICAL DATA

Max. Setting:	350	bar
Rated flow:	30	l/min
Cavity-Tooling:	20MS-3	
Installation torque:	40 - 50	Nm
Weight:	0.20	kg

### Pressure Setting:

Setting should be 1.3 times maximum load induced pressure.  
(We suggest when the Max. setting pressure is 350 bar, the load pressure has to be lower than 270 bar.)



### X PILOT RATIO

<b>32</b>	2 : 1	
<b>35</b>	5 : 1	

**Y**

### SPRINGS

ADJUSTMENT RANGES(1.7 bar Cracking Pressure)

**J**

140 - 350 bar (210 bar Standard Setting)

**Z**

### OPTIONS

**L**

Leakproof hex. socket screw.

