

# Primer Select

Prevent Water Repellency  
& Promote Turf Uniformity



## BENEFITS

Primer Select is the world's leading surfactant!

Ensures uniform movement, distribution and availability of water in the root-zone and overcome water repellency in the soil

Enhances turf quality and the efficient use of water, labour and other inputs.

Offers application rate and frequency flexibility depending on your soil type and frequency of application desired.

courses, athletic fields, in lawn and landscape situations to enhance to enhance turf quality. Research and experience has shown that more consistent results are achieved with more regular applications. Primer Select is safe enough to not directly water in after application. Normal irrigation is sufficient for moving Primer Select into the root zone.

**A Blended Non-Ionic Surfactant with Enhanced Matrix Flow Soil Surfactant**

## GENERAL FEATURES:

Primer Select can be easily applied to turf throughout the growing season. It is recommended for use on golf

Pack Size 10 L or 208 L

## APPLICATION RATES:

Sand-Based Mixes & Native Sandy Soils				
Rate	Application Frequency			
	14 Days *	21 Days *	30 Days *	6 Weeks **
Per 100m2	65ml	125ml	125 - 180ml	210 - 270ml
Per Ha	6.5L	12.5L	12.5L - 18L	21L - 27L
Fine Textured Non - Sand Soils				
Rate	Application Frequency			
	14 Days *	30 Days *		6 Weeks *
Per 100m2	65ml	65 - 125ml		95 - 180ml
Per Ha	6.5L	6.5L - 12.5L		9.5L - 18L
<b>Water rate</b>	Apply in 8.2L water per 100m2			
<b>*Special note</b>	Can be applied with tested soil directed chemicals and fertilisers			
<b>** Special note</b>	This application should be applied on its own			

Ensures uniform movement, distribution and availability of water in the root-zone



SMART PEOPLE. SMART PRODUCTS. SMART SOLUTIONS.

100% New Zealand Owned & Operated FREEPHONE 0800 280028 www.turfworld.co.nz

# Primer Select

Prevent Water Repellency  
& Promote Turf Uniformity



## WHAT IS PRIMER® SELECT?

Primer Select is a high-performance soil surfactant that is the foundation of an effective root-zone management program. It enhances turfgrass uniformity by establishing matrix flow in the root-zone, thus increasing water use efficiency in treated areas of highly managed turf. Based on the original Primer chemistry, this improved formulation allows you to adjust the application rate and frequency to more closely match your soil type and spray program needs. Primer Select is safe throughout the entire growing season for all turf species, and in all climates.

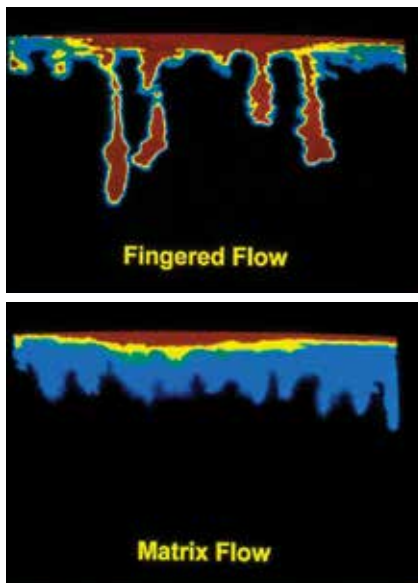
Water naturally follows the path of least resistance, leading to channeling or "fingered flow". If water does not move uniformly through the soil profile, it becomes

more prone to developing water repellency. Primer Select establishes "matrix flow" – the uniform downward and lateral flow of water and/or solutes in soil profiles. By establishing matrix flow, Primer Select creates a uniform wetting front to prevent the development of water repellent conditions. The overall result of Primer Select use is effective root-zone management, the foundation for healthy, attractive, uniform turf, and a manageable maintenance budget.

## The Benefits of Matrix Flow

Untreated soils do not wet uniformly, but rather follow a path of least resistance (top). Fingered flow occurs when the wetting front becomes unstable as water infiltrates. The front breaks into "fingers" causing only a small portion of the soil mass to become wet, while the majority of the root-zone remains dry. These "fingers" act like funnels directing and accelerating the flow of water and aqueous turf production chemicals below the root-zone. This results in a lack of uniform wetting of the root-zone, improper placement of turf production chemicals, and increased potential for leaching.

Under both laboratory (bottom) and field conditions, Primer Select was found to establish and maintain matrix flow, a uniform downward and lateral flow of water into the root-zone. Primer Select increases receptivity to applied water, produces uniform moisture and distribution of turf management chemicals, and dramatically reduces fingered flow and its associated problems of dry spots, wet spots and uneven wetting.



Enhances turfgrass uniformity by establishing  
matrix flow in root-zone

SMART PEOPLE. SMART PRODUCTS. SMART SOLUTIONS.

100% New Zealand Owned & Operated FREEPHONE 0800 280028 [www.turfworld.co.nz](http://www.turfworld.co.nz)

