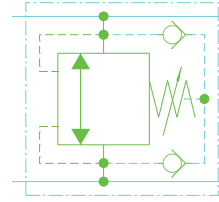
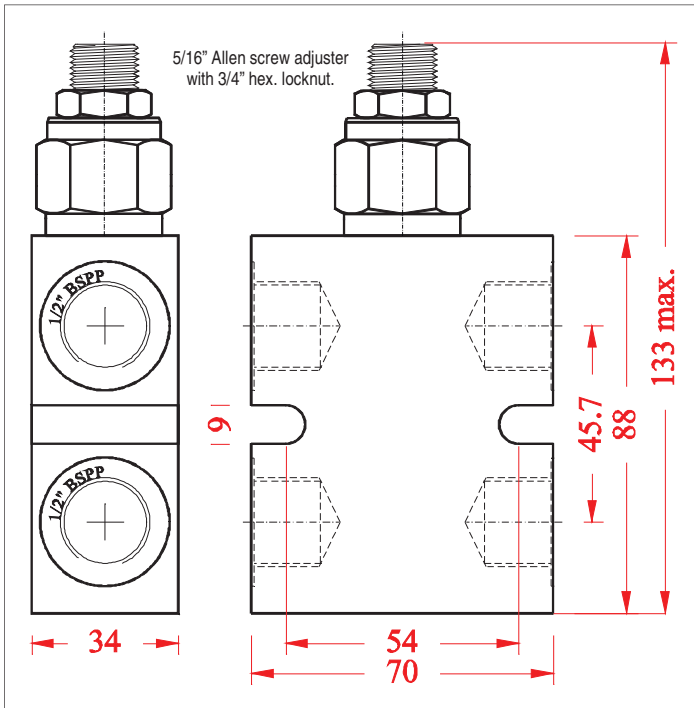


DIMENSIONS



DESCRIPTION: The XRV70 cross-line relief valve is a compact and lightweight unit consisting of a unique U.S. manufactured dual direction pressure relief cartridge in a high strength aircraft grade aluminium housing. The valve features a single adjustment for both directions of operation, wide adjustment range, variety of add-on adjuster options, and smooth performance to 70 litres per minute. Port spacings have the same centre distance as the ports of some popular series of Char-Lynn, Ross, and White motors, enabling direct mounting by means of commercially available hydraulic fittings. Alternatively, they may be in-line mounted for general applications.

OPERATION: When the pre-set pressure is reached in one line, the valve relieves excess pressure to the opposite line.

FEATURES:

- Compact.
- Line or motor port mounting.
- All cartridges 100% factory tested.
- Optional tamper evident adjuster cover (P/N 20086).
- Desired settings may be locked.
- Captive adjuster cannot be backed out of cartridge.
- Overpressure protected - spring cannot be wound solid.
- Single adjustment for both directions.

SPECIFICATIONS:

- OPERATING PRESSURE RANGE: 5 – 210 bar (75 – 3000 p.s.i.)
- MEDIA: general purpose hydraulic fluids @ -40° c to +120° c.
- FLOW: See performance chart.
- WEIGHT: 0.6 Kg.
- MATERIALS: All cartridge parts are steel, except seals. Body is aircraft grade aluminium. Standard seals are Buna N with teflon backups. Viton seals are available on special order.

IMPORTANT PRECAUTIONS

- ◆ All ports are B.S.P. parallel, and appropriate fittings must be used. Tapered fittings are not acceptable.
- ◆ Failure to correctly install or set these valves may result in damage to property, personal injury or death.

ORDERING CODE

XRV70

↑

VALVE SERIES