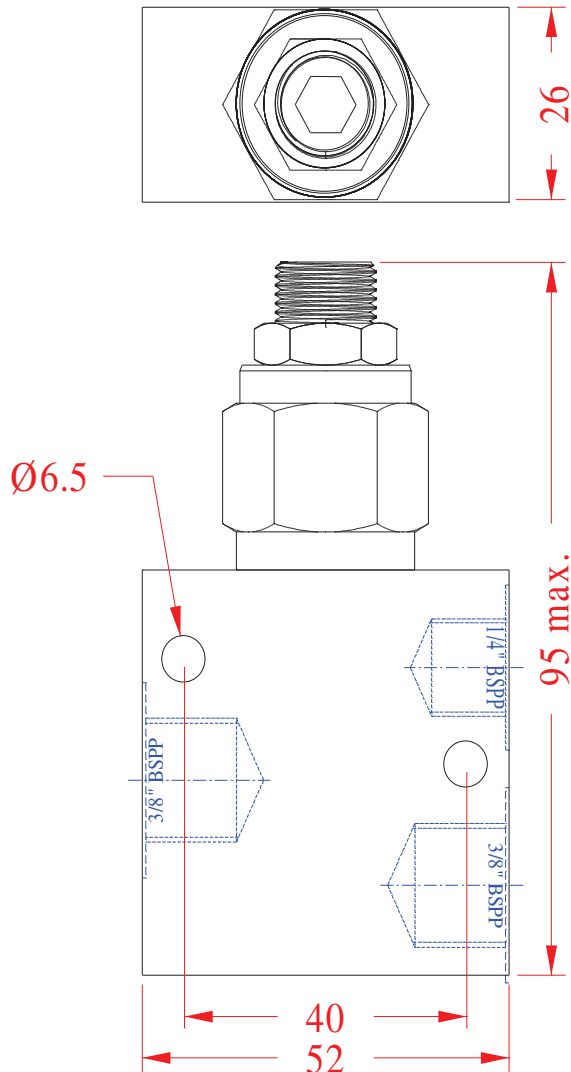


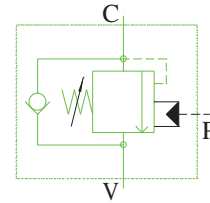
DIMENSIONS



IMPORTANT PRECAUTIONS

- ◆ Directional valves with motor spools (service ports connected to tank in neutral) should always be used in conjunction with these valves.
- ◆ All ports are B.S.P. parallel, and appropriate fittings must be used. Tapered fittings are not acceptable.
- ◆ Port C should always be connected directly to the actuator port or by a solid line of adequate strength, to minimise the possibility of line rupture and consequent system failure.
- ◆ **Failure to correctly install or set these valves may result in damage to property, personal injury or death.**

NOTES: VALVES ARE NOT PRESET, AND MUST BE ADJUSTED TO SUIT EACH APPLICATION PRIOR TO USE, USING APPROPRIATE TESTING EQUIPMENT.



DESCRIPTION: The SOCV50 SINGLE overcentre valve is an ultra-compact unit, for use in high pressure hydraulic circuits.

OPERATION: The valves provide smooth control over hydraulic cylinders and motors, preventing them from 'running away' due to load induced forces. Pilot ratio is 4:1.

FEATURES:

- Ultra compact.
- Steel housing.
- All cartridges 100% factory tested.
- Available with screw adjuster.
- Tamper evident adjuster cover option (P/N 20122).
- Desired settings may be locked.
- Captive adjusters cannot be backed out of cartridges.
- Overpressure protected - springs cannot be wound solid.

SPECIFICATIONS:

OPERATING PRESSURE: 345 bar (5000 p.s.i.) max.

MEDIA: general purpose hydraulic fluids @ -40° c to +120° c.

FLOW: See performance chart.

WEIGHT: 0.75 Kg.

MATERIALS: All parts are steel, except seals. Standard seals are Buna N with teflon backups. Viton seals are available on special order.

ORDERING CODE

SOCV50-30

VALVE SERIES

30=210 BAR
50=350 BAR