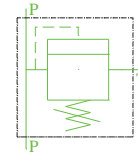
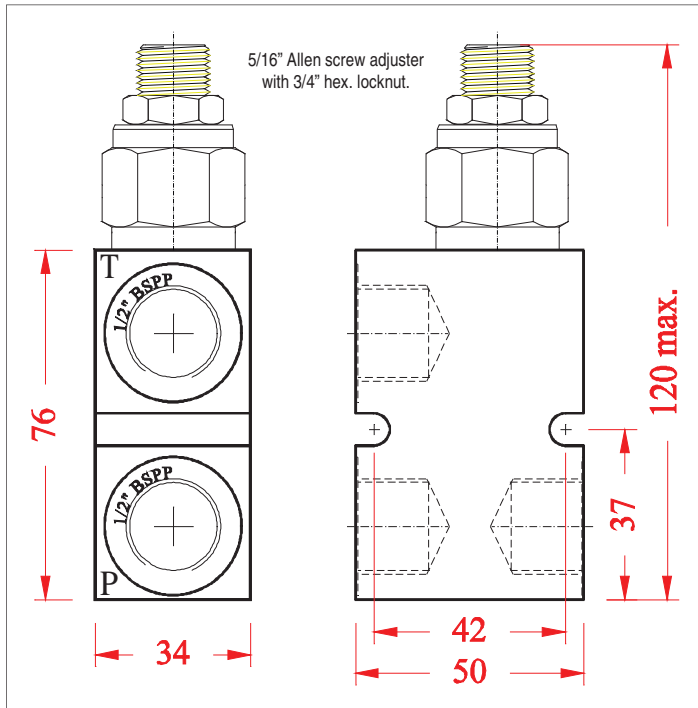


## DIMENSIONS



**DESCRIPTION:** The RVPS80 pressure relief valve is a compact and lightweight unit consisting of a U.S. manufactured pilot operated balanced piston relief cartridge mounted in a steel or high strength aircraft grade aluminium housing. The valve features a wide adjustment range, variety of add-on adjustment options, and smooth performance over a wide range of flows to 80 litres per minute. The convenient porting arrangement allows flow through the two pressure ports for in-line mounting. All ports are 1/2" BSPP.

**OPERATION:** When the pre-set pressure is reached in the pressure line, the valve relieves excess pressure to the tank port.

## FEATURES:

- Compact- fits in tight locations.
- Pilot operated cartridge.
- All cartridges 100% factory tested.
- Wide adjustment range without spring changes.
- Optional handwheel adjuster kit (P/N 20157).
- Optional tamper evident adjuster cover (P/N 20086).

## SPECIFICATIONS:

**OPERATING PRESSURE:** alum. body - 207 bar (3000 p.s.i.) max.  
steel body - 345 bar (5000 p.s.i.) max.

**MEDIA:** general purpose hydraulic fluids @ -40° c to +120° c.

**FLOW:** See performance chart

**WEIGHT:** alum. body - 0.42 Kg.  
steel body - Kg.

**MATERIALS:** All cartridge parts are steel, except seals. Body is steel or aircraft grade aluminium. Standard seals are Buna N with teflon backups. Viton seals are available on special order.

## IMPORTANT PRECAUTIONS

- ♦ All ports are B.S.P. parallel, and appropriate fittings must be used. Tapered fittings are not acceptable.
- ♦ Failure to correctly install or set these valves may result in damage to property, personal injury or death.

## ORDERING CODE

**RVPS80-A**

VALVE SERIES

BODY MATERIAL

A = ALUMINIUM BODY (3-210 BAR)  
S = STEEL BODY (5-350 BAR)