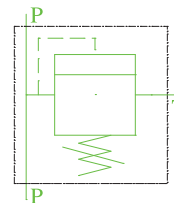
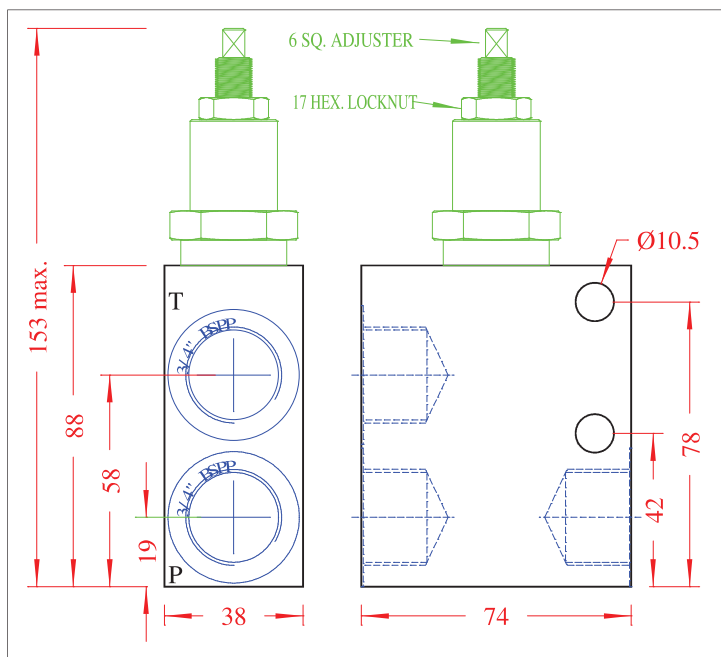


RVPS150 PILOT OPERATED PRESSURE RELIEF

DIMENSIONS



DESCRIPTION: The RVPS150 pressure relief valve is a compact and lightweight unit consisting of a European manufactured pilot operated balanced piston relief cartridge mounted in a steel or high strength aircraft grade aluminium housing. The valve features a wide adjustment range, variety of add-on adjustment options, and smooth performance over a wide range of flows to 150 litres per minute. The convenient porting arrangement allows flow through the two pressure ports for in-line mounting. All ports are 3/4" BSPP.

OPERATION: When the pre-set pressure is reached in the pressure line, the valve relieves excess pressure to the tank port.

FEATURES:

- Compact- fits in tight locations.
- Pilot operated cartridge.
- Wide adjustment range without spring changes.

SPECIFICATIONS:

OPERATING PRESSURE: alum. body - 207 bar (3000 p.s.i.) max.
steel body - 345 bar (5000 p.s.i.) max.

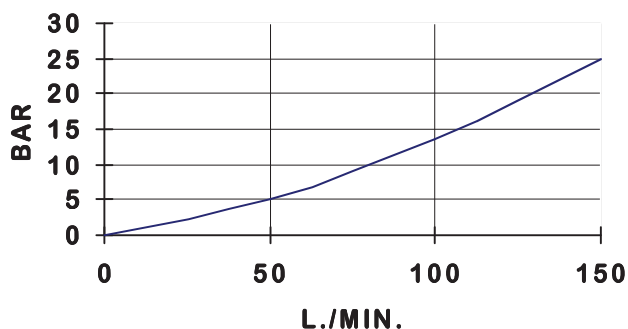
MEDIA: general purpose hydraulic fluids @ -40° c to +120° c.

FLOW: See performance chart.

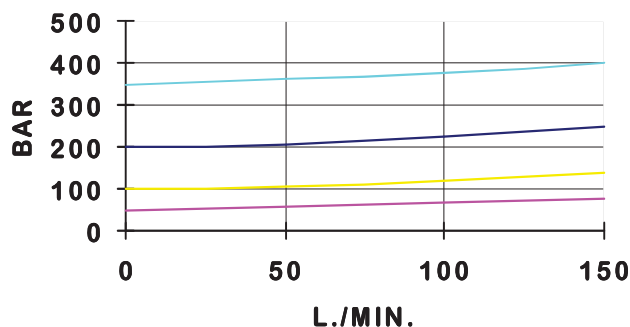
WEIGHT: alum. body - 0.8 Kg.
steel body - Kg.

MATERIALS: All cartridge parts are steel, except seals. Body is steel or aircraft grade aluminium. Standard seals are Buna N with teflon backups. Viton seals are available on special order.

MINIMUM PRESSURE SETTING



PERFORMANCE



NOTES: VALVES ARE NOT PRESET, AND MUST BE ADJUSTED TO SUIT EACH APPLICATION PRIOR TO USE, USING APPROPRIATE TESTING EQUIPMENT.

ORDERING CODE

RVPS150-A

VALVE SERIES

BODY MATERIAL

A = ALUMINIUM BODY (20-210 BAR)
S = STEEL BODY (50-350 BAR)