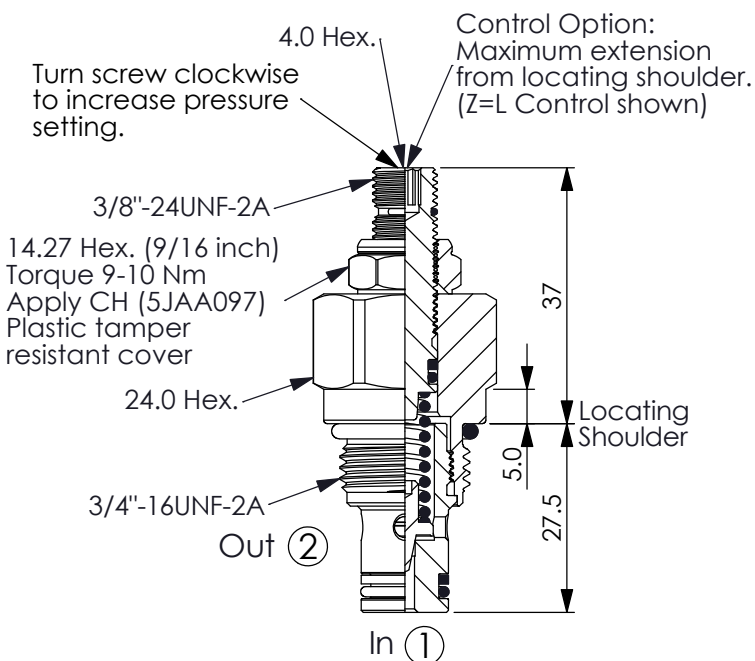
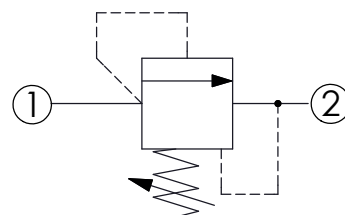
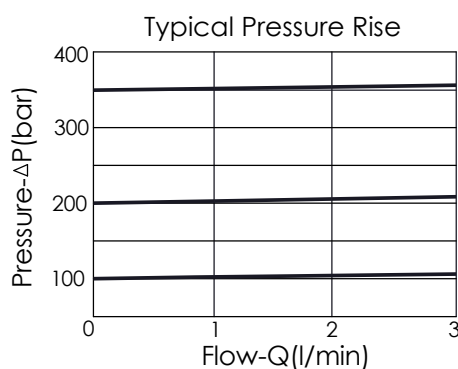


Ordering Code: **RD-08W-X-Y-Z-A**



UNIT:mm



TECHNICAL DATA

Max. Operating pressure:	350	bar
Rated flow:	3	l/min
Cavity-Tooling:	08W-2	
Installation torque:	25-35	Nm
Weight:	0.11 (Z=L)	kg

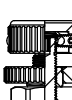
X OPERATION

23 Direct Acting ① to ② (P to T)

- Response Time-Typical (2 ms)
- Maximum Leakage Approximately (5 drops/min. to 85% of nominal setting)
- Dirt tolerant

Z OPTIONS

L Leakproof hex. socket screw. 

K Handknob with Lock Knob. (Order Code: 6ZAK001) 

T Three-winged Handknob Kit. 

Y PRESSURE SETTING

A	7-210 bar (70 bar Standard Setting)
B	3.5-105 bar (70 bar Standard Setting)
C	10.5-420 bar (70 bar Standard Setting)
D	1.7-55 bar (28 bar Standard Setting)
E	1.7-28 bar (14 bar Standard Setting)
W	10.5-315 bar (70 bar Standard Setting)

• We also provide 50-350 bar option. Please consult our sales department if you need it.