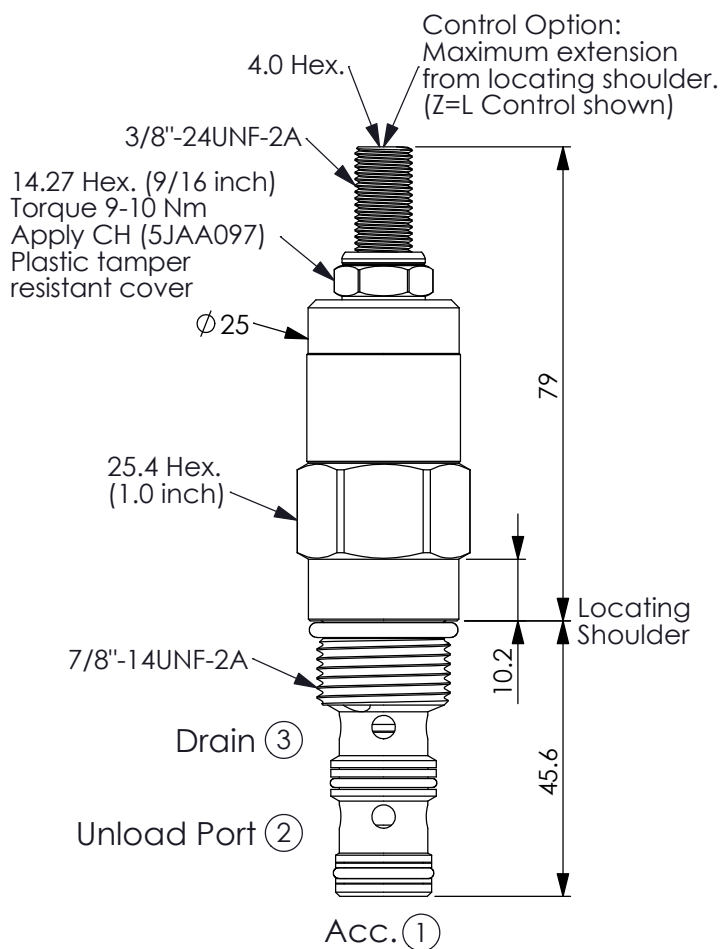


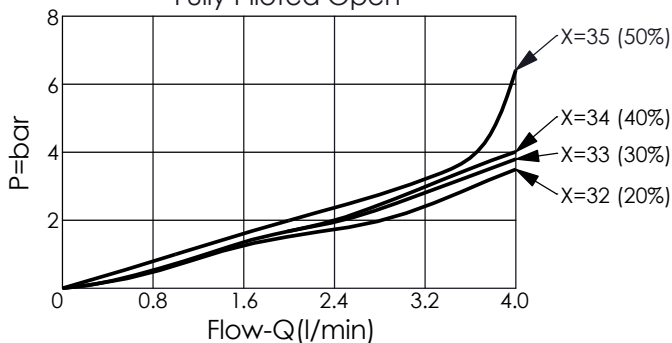
ACCUMULATOR SENSE, PUMP UNLOAD VALVE

Ordering Code: **QP-10W-X-Y-Z**



UNIT:mm

Pressure Differential vs. Flow
Fully Piloted Open



Y

SPRINGS

ADJUSTMENT RANGES

A

70-210 bar (70 bar Standard Setting)

B

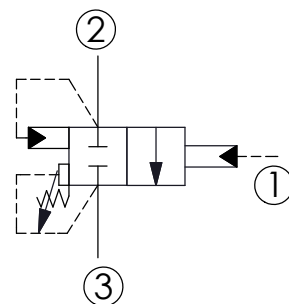
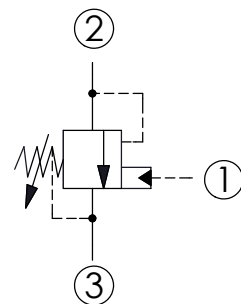
30-105 bar (70 bar Standard Setting)

D

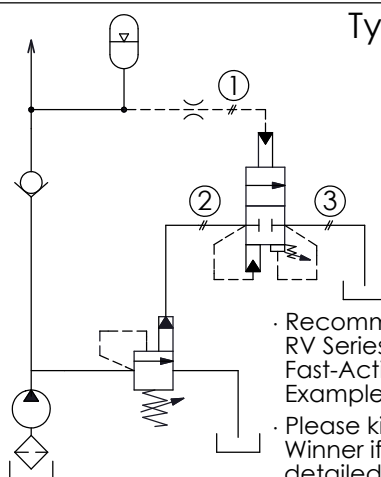
18-55 bar (25 bar Standard Setting)

W

100-280 bar (210 bar Standard Setting)



Typical Circuit



- Recommend With RV Series, Relief Valve, Fast-Acting.
Example: RV11A30-M-85
- Please kindly contact Winner if you need detailed information.

TECHNICAL DATA

Max.Operating pressure: 350 bar

Rated flow: 4 l/min

Cavity-Tooling: 10W-3

Installation torque: 35-45 Nm

Weight: 0.25 kg

Note: Careful consideration should be given when selecting an adjustment range. System pressure drops and flows tend to affect the operation of unloading valves.

X

OPERATION

31 10% Nominal Differential

32 20% Nominal Differential

33 30% Nominal Differential

34 40% Nominal Differential

35 50% Nominal Differential

· If you need to control precisely, please select QP-11A-3A(32)(33)(35).

Z

OPTIONS

L

Leakproof hex. socket screw.

