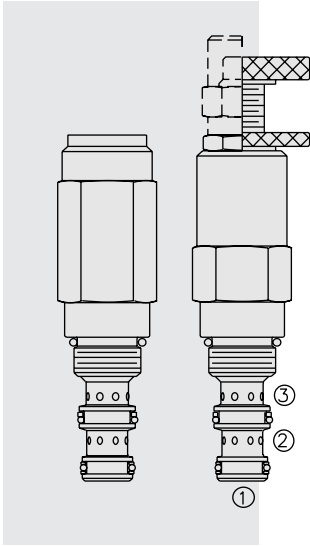
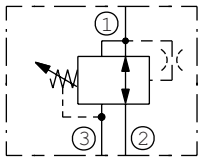


PR58-38 Pressure Reducing/Relieving Spool Valve



ISO SYMBOL



DESCRIPTION

A screw-in, cartridge-style, direct-acting, spool-type, hydraulic pressure reducing/relieving valve, with internal spring-chamber drain and spool damping chamber. It is designed to act as a pressure regulating valve for secondary circuits.

OPERATION

In its steady state, the **PR58-38** allows flow to pass bidirectionally from port 2 to port 1, with the spring chamber constantly drained at port 3. Upon attainment of a predetermined pressure at 1, the spool shifts to block flow at 2, thereby regulating pressure at 1. In this mode, the valve will also relieve from port 1 to port 3, at a user-specified value over the set reducing pressure. Tank port pressure is additive to the pressure setting at a ratio of 1:1.

FEATURES

- Adjustments cannot be backed out of the valve.
- Variety of adjustment options including non-adjustable factory pre-set.
- Adjustment options A, B, and D: positive stops prevent springs from going solid.
- Optional spring ranges to 248 bar (4200 psi).
- Optional "rapid response" style spool.
- Optional 233 micron screen.
- Hardened parts for long life.
- Industry common cavity.

RATINGS

Maximum Operating Pressure: 345 bar (5000 psi)

Proof Pressure: 379 bar (5500 psi)

Burst Pressure: 896 bar (13000 psi)

Regulated Pressure Range: 10.3–220.6 bar (150–4200 psi)

Note: 241 bar (3500 psi) maximum for 'F' and 'H' adjustment options.

Maximum Tank Port Pressure: 68.9 bar (1000 psi)

Standard Spring Ranges: 10.3 to 289.6 bar (150 to 4200 psi)

Shown in To Order section. Due to manufacturing tolerances, it may be possible to adjust the valve either lower or higher than the nominal ratings shown. If the valve is adjusted beyond the recommended pressure range for F and H style adjuster options, the valve may not open to relieve pressure.

Flow Rating: 18.9 lpm (5 gpm); See performance chart.

Maximum Internal Leakage to Port 3: 82 ml/minute (5.0 cu. in./minute)

Temperature: -40 to 100°C (-40 to 212°F) with Buna N seals;

-26 to 204°C (-15 to 400°F) with fluorocarbon seals;

-54 to 107°C (-65 to 224°F) with urethane and polyurethane seals.

Filtration: See page 9.010.1

Fluids: Mineral-based or synthetics with lubricating properties at viscosities of

7.4 to 420 cSt (50 to 2000 sus); See Temperature and Oil Viscosity, page 9.060.1

Installation: No restrictions; See page 9.020.1

Cavity: VC08-3; See page 9.108.1; **Cavity Tool:** CT08-3XX; See page 8.600.1

Seal Kit: SK08-3X-BM; See page 8.650.1

PERFORMANCE (Cartridge Only)

